

Series 803 Mighty Mouse ¼ Turn Bayonet Coupling Hermetic Receptacle Connector Ordering Information

803-006



Series 803



Series 803 Hermetic Jam Nut Mount

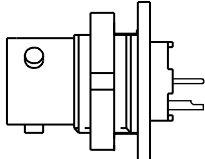

Series 803 Hermetic Receptacles feature 304L stainless steel shells, fused vitreous glass insulators and gold-plated Alloy 52 iron alloy contacts.

1000 PSI Pressure Rating in open face (unmated) condition.

Solder Cup Or PCB Contacts

1 X 10⁻⁷ cc/second maximum helium leak rate when tested at 1 atmosphere vacuum.

Two Shell Styles are available: Jam Nut and Flange Mount.

HOW TO ORDER					
Sample Part Number					
803-006	-07	Z1	9-19	P	N
Series	Shell Style	Shell Material / Finish	Shell Size/Insert	Contact Type	Shell Key Position
803-006 Hermetic Receptacles with Printed Circuit Board Contacts or Solder Cup Contacts	 - 07 Jam Nut	Z1 Stainless Steel / Passivated ZL Stainless Steel/ Nickel Plated	SEE CONTACT ARRANGEMENTS PAGE F-2	P Pin, Solder Cup C Pin, PC Tail S Socket, Solder Cup D Socket, PC Tail	N Normal Alternate Key Positions: X Y Z
	 - 02 Flange Mount				

Dimensions in inches (millimeters) and are subject to change without notice.

© 2010 Glenair, Inc.

CAGE Code 06324

Printed in U.S.A.

GLENAIR, INC. • 1211 AIR WAY • GLENDALE, CA 91201-2497 • 818-247-6000 • FAX 818-500-9912

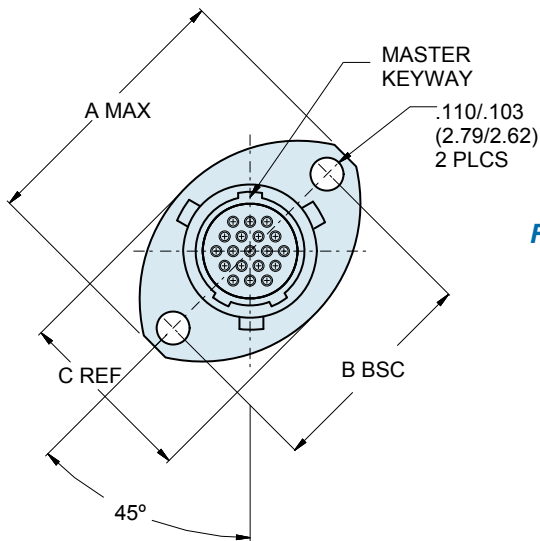
www.glenair.com

F-13

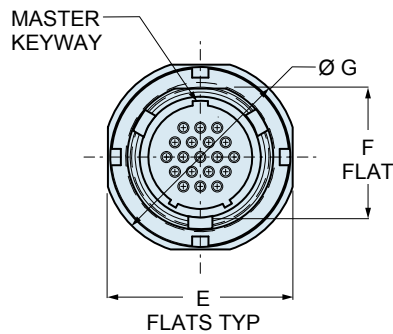
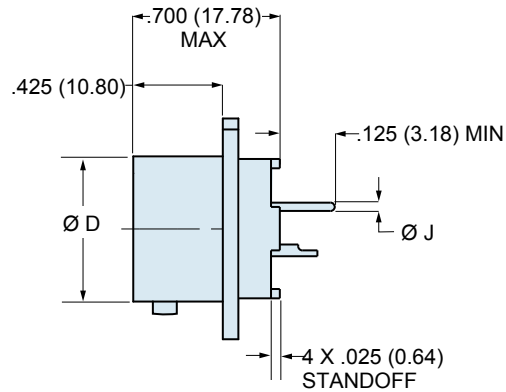
E-Mail: sales@glenair.com

14-SEPTEMBER-2011

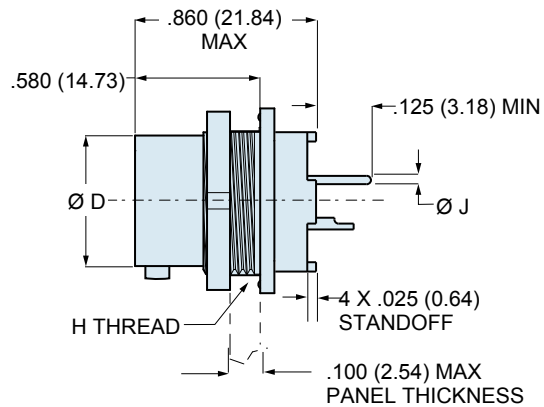
F



**Flange Mount
Receptacle**
803-006-02



**Jam Nut
Receptacle**
803-006-07



DIMENSIONS

Shell Size	A Max.		B Bsc.		C Ref.		Ø D		E Flats		F Flat		Ø G		H Thread	Ø J Tail Dia.
	In.	mm.	In.	mm.	In.	mm.	In.	mm.	In.	mm.	In.	mm.	In.	mm.		
5	.703	17.86	.513	13.03	.460	11.68	.300	7.62	.545	13.84	.350	8.89	.575	14.61	.3750-32 UNEF-2A	#23
6	.788	20.02	.598	15.19	.522	13.26	.362	9.19	.595	15.11	.410	10.42	.635	16.13	.4375-28 UNEF-2A	.018/.022 (0.46/0.56)
7	.890	22.61	.708	17.98	.590	14.99	.436	11.07	.723	18.36	.536	13.61	.755	19.18	.5625-32 UN-2A	#20
8	1.154	29.31	.964	24.49	.668	16.97	.508	12.91	.790	20.07	.593	15.10	.755	19.18	.6250-32 UN-2A	.024/.028 (0.61/0.71)
9	1.207	30.66	1.017	25.83	.721	18.31	.561	14.25	.790	20.07	.596	15.14	.830	21.08	.6250-28 UN-2A	#16
10	1.291	32.79	1.101	27.97	.795	20.19	.635	16.13	.925	23.51	.925	.721	.890	22.61	.7500-28 UN-2A	.060/.064 (1.52/1.63)
12	1.394	35.41	1.204	30.58	.874	22.20	.714	18.14	1.044	26.52	.845	21.46	1.078	27.38	.8750-28 UN-2A	#12
14	1.545	39.24	1.280	32.51	1.050	26.67	.865	21.97	1.230	31.24	1.022	25.96	1.264	32.11	1.0625-20 UN-2A	.092/.096 (2.34/2.44)

Dimensions in inches (millimeters) and are subject to change without notice.