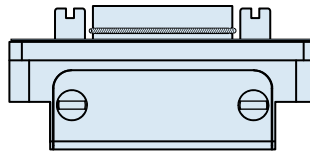


Series 79 Micro-Crimp Section G: Right Angle Printed Circuit Board Connectors



PCB Hole Patterns for 790-037S and 790-042S Plugs

This section contains printed circuit board footprints for right angle Series 79 plugs. The contact identification numbers are shown for the connector mounting side of the PC board. Contact tails are gold over nickel plated.



CONNECTOR ORIENTATION

Contact Size	PC Tail Diameter	
	In.	Ø Diameter mm.
#23	.018-.022	0.46-0.56
#16	.060-.064	1.52-1.63
#12	.092-.096	2.34-2.44

790-037S AND 790-042S PRINTED CIRCUIT BOARD PATTERNS

Insert Arr.	Component Mounting Side of PCB Mating Face of Connector is Toward Top of Page
A-5	
B-2P2	
B-9	
C-13	

Dimensions in inches (millimeters) and are subject to change without notice.

790-037S AND 790-042S PRINTED CIRCUIT BOARD PATTERNS

Insert Arr.	Component Mounting Side of PCB Mating Face of Connector is Toward Top of Page
D-15	
D-3P3	
D-7P2	
E-11P2	
E-19	

Dimensions in inches (millimeters) and are subject to change without notice.

Series 79 Micro-Crimp Section G: Right Angle Printed Circuit Board Connectors



790-037S AND 790-042S PRINTED CIRCUIT BOARD PATTERNS

Insert Arr.	Component Mounting Side of PCB Mating Face of Connector is Toward Top of Page
E-7P3	
F-15P2	
F-23	
F-5P5	
G-33	

Dimensions in inches (millimeters) and are subject to change without notice.

790-037S AND 790-042S PRINTED CIRCUIT BOARD PATTERNS

Insert Arr.	Component Mounting Side of PCB Mating Face of Connector is Toward Top of Page
H-10P4	
H-29P7	
H-36P2	
H-54P2	
H-5P5	

Dimensions in inches (millimeters) and are subject to change without notice.

Series 79 Micro-Crimp Section G: Right Angle Printed Circuit Board Connectors



790-037S AND 790-042S PRINTED CIRCUIT BOARD PATTERNS

Insert Arr.	Component Mounting Side of PCB Mating Face of Connector is Toward Top of Page
H-66	<p>Dimensions: 1.800 (45.72), .900 (22.86), .125 ± .003 (3.18 ± 0.08) 2x, .075 (1.91) TYP, .0375 (0.95) TYP, .075 (1.91) TYP.</p> <p>Notes: (HOLE TO ACCEPT .022 (0.56) MAX DIA CONTACT 66x), $\Phi \varnothing .003 \text{ (M) (A) (M)}$</p>
J-17P4	<p>Dimensions: 1.615 (41.02), .8075 (20.51), .3725 (9.46), .075 (1.91) TYP, .0375 (0.95) TYP, .175 (4.45) TYP, .075 (1.91) TYP.</p> <p>Notes: (HOLE TO ACCEPT .022 (0.56) MAX DIA CONTACT 13x), $\Phi \varnothing .003 \text{ (M) (A) (M)}$, (HOLE TO ACCEPT .064 (1.63) MAX DIA CONTACT 4x), $\Phi \varnothing .003 \text{ (M) (A) (M)}$</p>
J-25P2	<p>Dimensions: 1.615 (41.02), .8075 (20.51), .5475 (13.91), .075 (1.91) TYP, .0375 (0.95) TYP, .075 (1.91) TYP.</p> <p>Notes: (HOLE TO ACCEPT .022 (0.56) MAX DIA CONTACT 23x), $\Phi \varnothing .003 \text{ (M) (A) (M)}$, (HOLE TO ACCEPT .064 (1.63) MAX DIA CONTACT 2x), $\Phi \varnothing .003 \text{ (M) (A) (M)}$</p>
J-33	<p>Dimensions: 1.615 (41.02), .8075 (20.51), .075 (1.91) TYP, .0375 (0.95) TYP, .075 (1.91) TYP.</p> <p>Notes: (HOLE TO ACCEPT .022 (0.56) MAX DIA CONTACT 33x), $\Phi \varnothing .003 \text{ (M) (A) (M)}$</p>
J-7P7	<p>Dimensions: 1.615 (41.02), .8075 (20.51), .175 (4.45) 6x.</p> <p>Notes: (HOLE TO ACCEPT .064 (1.63) MAX DIA CONTACT 7x), $\Phi \varnothing .003 \text{ (M) (A) (M)}$</p>

Dimensions in inches (millimeters) and are subject to change without notice.

790-037S AND 790-042S PRINTED CIRCUIT BOARD PATTERNS

Insert Arr.	Component Mounting Side of PCB Mating Face of Connector is Toward Top of Page
K-27P4	
K-35P2	
K-43	
K-9P9	
L-6P6	

Dimensions in inches (millimeters) and are subject to change without notice.