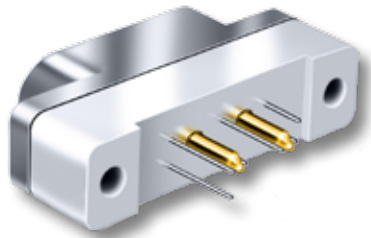


Combo Micro-D for High Power Applications





Micro-D
Combo



13 Amp Current Rating—Combo Micro-D's combine the size and weight advantages of a Micro -D connector with the added ability to handle higher power needs.

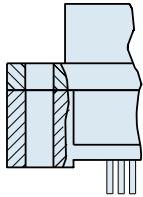
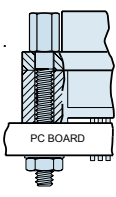
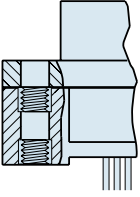
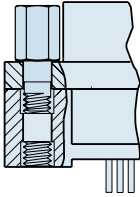
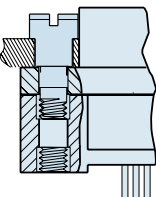
Printed Circuit Board Terminals—Ideal for flexible circuits or rigid boards, these gold plated PC tail contacts are sealed with epoxy encapsulant and are non-removable.

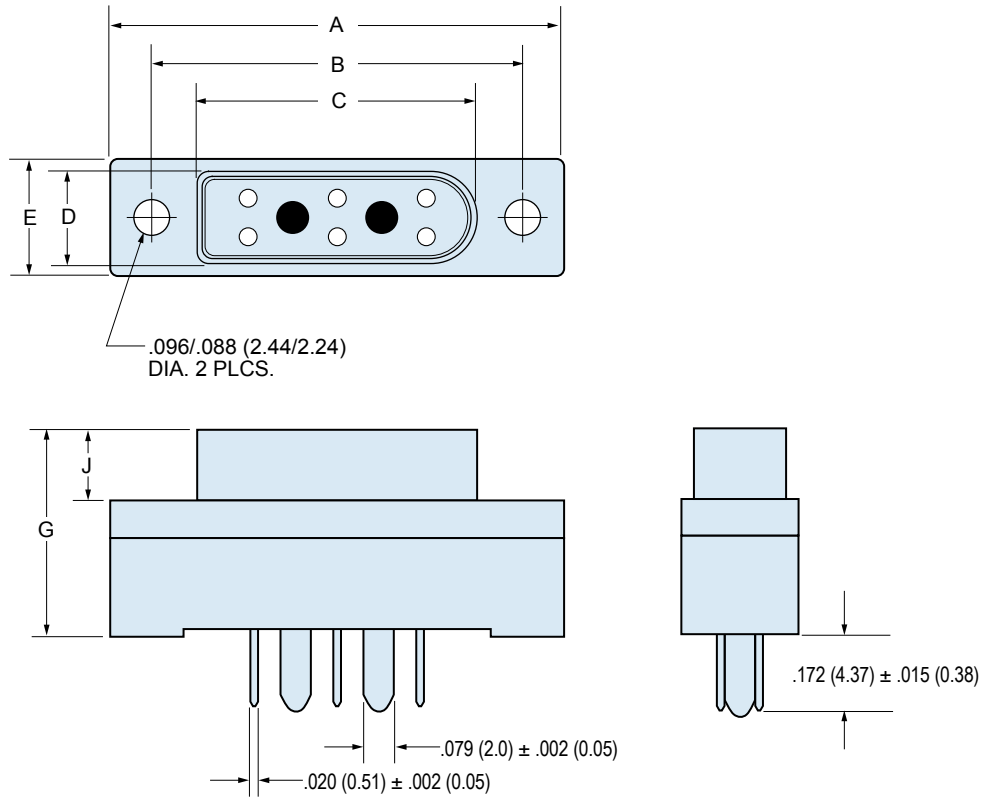
HOW TO ORDER VERTICAL MOUNT PCB COMBO MICRO-D CONNECTORS

Series	Shell Finish	Shell Size and Insert Arrangement	Shell Style	Termination Style	Hardware	PC Tail Length
GMPM	1 – Cadmium	B112	P – Plug	CBS Compact Vertical Mount	NN – No Jackpost, No Threaded Insert	.172
	2 – Nickel	D112	R – Receptacle		PN – Extended Jackpost for .062" (1.6) PCB, No Threaded Insert	.109
	4 – Black Anodize	D112	 Plug  Receptacle		RN – Extended Jackpost for .196" (5.0) PCB, No Threaded Insert	.150
	5 – Gold Plated	D113			NU – 2-56 UNC Threaded Insert, No Jackposts	.190
	6 – Chem Film	E113			NM – Metric M2 Threaded Insert, No Jackposts	.250
	Stainless Steel Shell				SU – Short Jackpost, 2-56 UNC Threaded Insert	
3 – Passivated		SM – Short Jackpost, M2 Metric Threaded Insert				
Rear Panel Jackposts Supplied either with U style 2-56 UNC or M style M2 Threaded Inserts TU or TM – 0.094" (2.4) Panel VU or VM – 0.062" (1.6) Panel WU or WM – 0.047" (1.2) Panel XU or XM – 0.031" (0.8) Panel XU or XM – 0.023" (0.6) Panel						Length in Inches ± .015 (0.38)
Sample Part Number						
GMPM	2	B112	R	CBS	PU	– .110

F

GMR7580 JACKPOST OPTIONS

NN	PN and RN	NU, NM	SU, SM	TU, VU, WU, XU, YU TM, VM, WM, XM, YM
				
Thru-Hole	Jackpost Kit PN – .062 (1.6) PCB RN – .196 (5.0) PCB	Threaded Inserts	Jackpost With Threaded Insert	Jackpost for Rear Panel Mounting



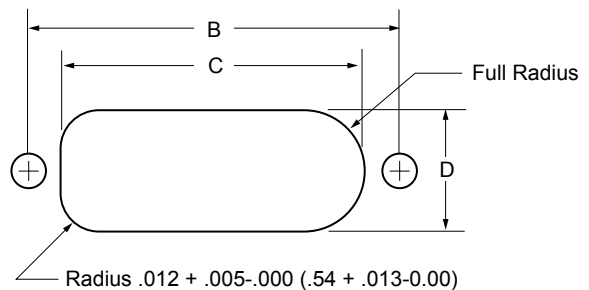
F

DIMENSIONS

Layout	A Max.		B		C Max.		D Max.		E Max.		G Max.		J Max.	
	In.	mm.	In. ± .003	mm. ± 0.08	In.	mm.	In.	mm.	In.	mm.	In.	mm.	In.	mm.
B112P	.935	23.75	.715	18.16	.481	12.21	.242	6.15	.315	8.00	.355	9.02	.184	4.68
B112R	.935	23.75	.715	18.16	.547	13.92	.315	8.00	.315	8.00	.355	9.02	.197	5.01
D112P	1.185	30.01	.965	24.51	.731	18.56	.242	6.15	.315	8.00	.355	9.02	.184	4.68
D112R	1.185	30.01	.965	24.51	.798	20.27	.315	8.00	.315	8.00	.355	9.02	.197	5.01
D113P	1.185	30.01	.965	24.51	.731	18.56	.242	6.15	.315	8.00	.355	9.02	.184	4.68
D113R	1.185	30.01	.965	24.51	.798	20.27	.315	8.00	.315	8.00	.355	9.02	.197	5.01
E113P	1.335	33.91	1.115	28.32	.881	22.37	.242	6.15	.315	8.00	.355	9.02	.184	4.68
E113R	1.335	33.91	1.115	28.32	.948	24.08	.315	8.00	.315	8.00	.355	9.02	.197	5.01

RECOMMENDED PANEL CUTOUT

Layout	B		C		D	
	In. ± .003	mm. ± 0.08	In. + .004 - .000	mm. +0.06 -0.00	In. + .004 - .000	mm. +0.06 -0.00
B112	.715	18.16	.550	13.95	.316	8.02
D112	.965	24.51	.800	20.30	.316	8.02
D113	.965	24.51	.800	20.30	.316	8.02
E113	1.115	28.32	.950	24.11	.316	8.02

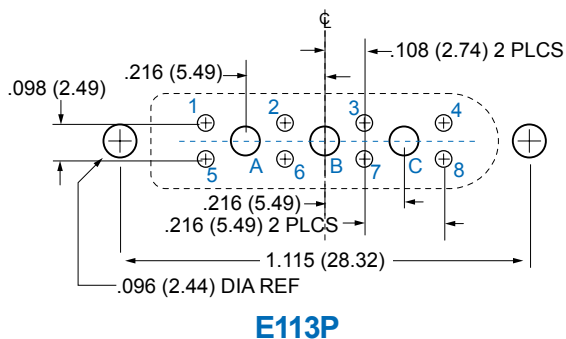
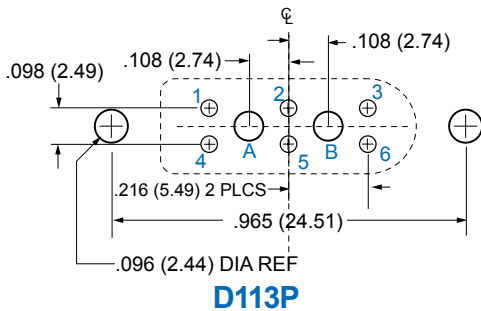
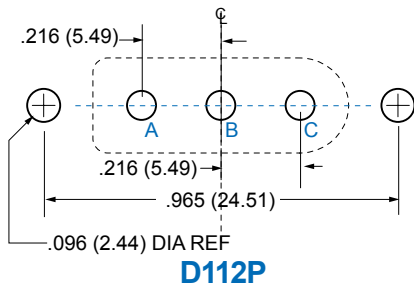
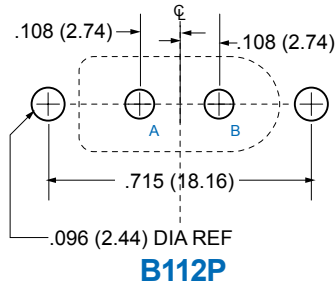


COMBO MICRO-D PCB LAYOUTS

Patterns shown are for connector mounting side of PC board.

Plated thru-holes to accept .081 (2.06) maximum diameter power pins marked A, B and C, and .022 maximum diameter signal pins marked 1 – 8.

Plug Connectors



Receptacle Connectors

