

Low Profile
Metal and Plastic Shell Micro-D
Product Selection Guide

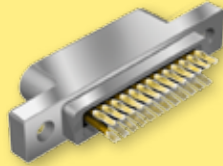


Micro-D
Double and
Triple Row

SECTION E LOW PROFILE MLDM AND MWDL MICRO-D PRODUCT SELECTION GUIDE

**Metal Shell
Solder Cup**

Page E-3



MLDM Metal Shell, Solder Cup

Solder cup contacts accept #24-30 AWG solid or stranded wire. Available in 9 to 51 positions. High performance M83513 TwistPin contact system. Contacts are factory-installed, non-removable and are encapsulated with epoxy. Gold-plated solder cups. 3 Amp, 600 Vac, -55°C to +150°C.

**Metal Shell
Pre-Wired**

Page E-5

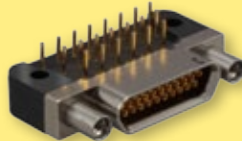


MLDM Metal Shell, Pre-Wired

Pre-wired with #24 to #30 stranded wire or uninsulated solid wire. Available in 9 to 51 positions. High performance M83513 TwistPin contact system. Contacts are factory-installed, non-removable and are encapsulated with epoxy. 3 Amp, 600 Vac, -55°C to +150°C.

**Metal Shell
Right Angle PCB**

Page E-11



MLDM Metal Shell, Right Angle PCB

Available in 9 to 51 positions. High performance M83513 TwistPin contact system. Contacts are factory-installed, non-removable and are encapsulated with epoxy. PCB terminal spacing is .100" x .100" for easy board fabrication. 3 Amp, 600 Vac, -55°C to +150°C.

**Plastic Shell
Solder Cup**

Page E-15



MWD All-Plastic, Solder Cup

These connectors are available with nine through 51 contacts. Featuring the same TwistPin contact system as the MLDM metal shell connector, the MWD All-Plastic connector is an economical alternative to metal shell connectors. Gold-plated solder cups accept #24 – #30 AWG wire. 3 Amp, 600 Vac, -55°C to +150°C.

**Plastic Shell
Pre-Wired**

Page E-17

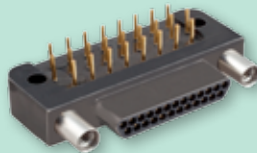


MWD All-Plastic, Pre-Wired

These crimp-terminated pre-wired assemblies offer an alternative to the time-consuming job of soldering wires. Connectors are available with insulated, stranded mil spec wire or with uninsulated single strand wire. Back-to-back cables assemblies are also available. #24 – #30 AWG wire size. 3 Amp, 600 Vac, -55°C to +150°C.

**Plastic Shell
Right Angle PCB**

Page E-23



MWD All-Plastic, Right Angle PCB

Available in 9 to 51 positions. High performance M83513 TwistPin contact system. Contacts are factory-installed, non-removable and are encapsulated with epoxy. Gold-plated PC tails. PCB terminal spacing is .100" x .100" for easy board fabrication. 3 Amp, 600 Vac, -55°C to +150°C.

E