

# Section C Micro-D Metal Shell Printed Circuit Board Connectors



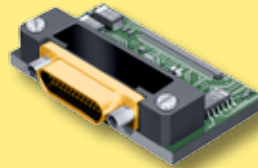
## PRODUCT SELECTION GUIDE

### MWDM .100" Pitch Thru-Hole Printed Circuit Board

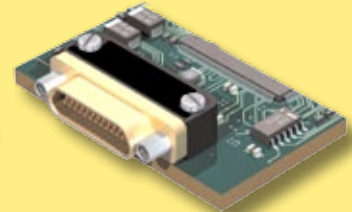
Always in stock, these industry-standard PCB connectors feature 63/37 SnPb solder-dipped .020" diameter tails in eight lengths.



**"BS" Vertical**  
Page C-10



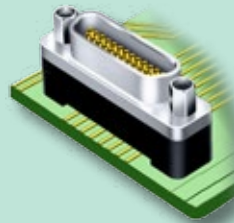
**"BR" 90°**  
Page C-6



**"CBR" Condensed 90°**  
Page C-2

### MWDM .100" X .075" Compact Vertical Mount

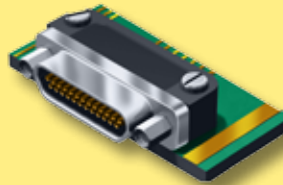
A recent addition to the M83513 spec, these connectors save real estate on the circuit board and are also intended for use on flexible circuits.



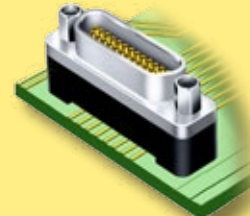
**"CBS" Vertical Condensed**  
Page C-14

### GMR75 .075" X .075" Pitch Thru-Hole PCB

These connectors save size and weight compared to .100" pitch connectors. Available with two standard tail lengths plus a staggered tail version, these connectors also have a full range of mounting hardware options and shell plating options.



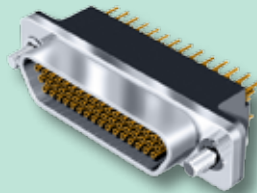
**GMR7590**  
Page C-28



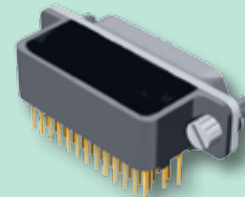
**GMR7580**  
Page C-20

### GMR75C .075" X .075" Pitch Compact

Designed for flexible circuits, these connectors are modified versions of the GMR75 series. The flange thickness is .100" maximum, allowing installation of standard jackscrews.



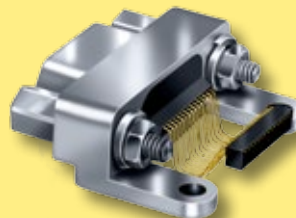
**GMR7580C**  
Page C-24



**GMR7590C**  
Page C-32

### MWDM Surface Mount Right Angle

These connectors feature .025 inch (0.64 mm.) terminal spacing. The integral metal mounting legs provide a ground path. A molded alignment strip ensures accurate terminal registration.



**Surface Mount**  
Page C-36