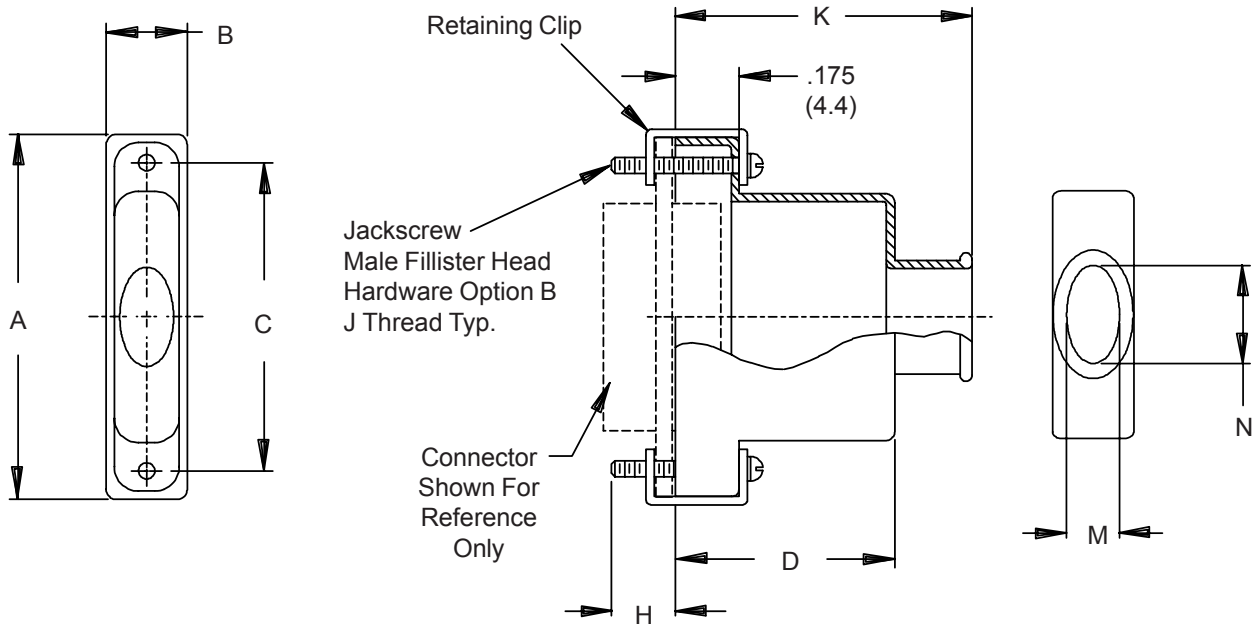


500-047
EMI/RFI Elliptical Entry
Micro-D Banding Backshell



HOW TO ORDER

Series	Basic Part Number	Shell Plating *	Shell Size (Table I)	Hardware Options *	Band Option
500	047	C – Black Anodize	09	B – (2) male fillister head	B 600-052 Band Supplied - (Omit if Not Required)
		E – Chem. Film	15	E – (2) extended jackscrew	
		J – Gold Iridite Over Cadmium Over Electroless Nickel	21	H – (2) male hex socket	
		M – Electroless Nickel	25	F – (2) female jackpost	
		NF – Cadmium, Olive Drab Over Electroless Nickel	31	T – Qwik-Ty	
		Z2 – Gold	37		
			100		
Sample Part Number:					
500	— 047	M	21	B	B
* SEE PAGE C-4 FOR COMPLETE INFORMATION					

Metric dimensions (mm) are indicated in parentheses.

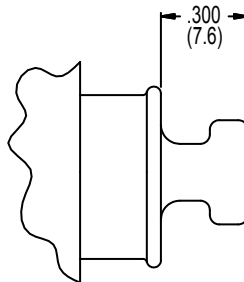
500-047
EMI/RFI Elliptical Entry
Micro-D Banding Backshell



MIL-DTL-83513
 Micro-D

Elliptical entry Micro-D backshells offer greater wire accommodation than round entry backshells. These rugged aluminum backshells are designed for use with Glenair's EMI bands for shield termination. Please see page C-3 for elliptical entry cable bundle diameters.

- Elliptical Entry for Increased Wire Bundle Size
- Aluminum Alloy
- Supplied with Mounting Hardware



QWIK-TY
SYM T

TABLE I: DIMENSIONS

SHELL SIZE	A	B	C	D	H REF
09	.775 (19.7)	.34 (8.6)	.565 (14.4)	.32 (8.1)	.154 (3.9)
15	.925 (23.5)	.34 (8.6)	.715 (18.2)	.44 (11.2)	.154 (3.9)
21	1.075 (27.3)	.34 (8.6)	.865 (22.0)	.56 (14.2)	.154 (3.9)
25	1.175 (29.8)	.34 (8.6)	.965 (24.5)	.62 (15.7)	.154 (3.9)
31	1.325 (33.7)	.34 (8.6)	1.115 (28.3)	.68 (17.3)	.154 (3.9)
37	1.475 (37.5)	.34 (8.6)	1.265 (32.1)	.72 (18.3)	.154 (3.9)
51	1.425 (36.2)	.38 (9.7)	1.215 (30.9)	.75 (19.1)	.154 (3.9)
100	2.160 (54.9)	.43 (10.9)	1.800 (45.7)	.81 (20.6)	.184 (4.7)

SHELL SIZE	J THREAD	K ± .03 (0.8)	M	N
09	2-56 UNC-2	.75 (19.1)	.281 (7.1)	.312 (7.9)
15	2-56 UNC-2	.88 (22.4)	.281 (7.1)	.420 (10.7)
21	2-56 UNC-2	1.00 (25.4)	.281 (7.1)	.590 (15.0)
25	2-56 UNC-2	1.06 (26.9)	.281 (7.1)	.690 (17.5)
31	2-56 UNC-2	1.12 (28.4)	.281 (7.1)	.820 (20.8)
37	2-56 UNC-2	1.16 (29.5)	.281 (7.1)	.970 (24.6)
51	2-56 UNC-2	1.19 (30.2)	.312 (7.9)	.920 (23.4)
100	4-40 UNC-2	1.25 (31.8)	.360 (9.1)	1.290 (32.8)

Metric dimensions (mm) are indicated in parentheses.