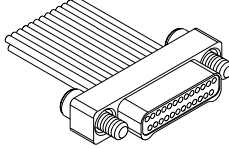
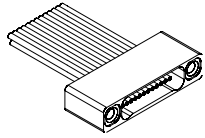


## Series 891 Nanominiature TwistPin Connectors Dual Row Metal Shell With Insulated Wire 891-001 & 891-002

### How To Order Series 891 Connectors with Insulated Wire

Series	Insert Arrangement/ Contact Type	Shell Matl/Finish	Wire Gauge	Wire Type	Wire Color Code	Wire length	Hardware	
<b>891-001</b> Plug, Pin Contacts, Dual Row  	Plugs (891-001)	<b>A1</b> Aluminum Shell, Cadmium Plating	<b>0</b> #30 AWG	<b>A</b> Ultralightweight XLETPE Insulation, Silver-Coated Ultrahigh-Strength Copper (Not available for #32 AWG)	<b>1</b> White	<b>Wire Length in Inches</b> (Example: "12" for 12 inches of wire)	<b>J</b> Jackscrew, #0-80 Threads	
		<b>A2</b> Aluminum Shell, Electroless Nickel Plating	<b>2</b> #32 AWG (Wire Type B Only)					<b>B</b> Extruded PTFE Insulation, Silver-Coated Copper, NEMA HP3-ETX (MIL-W-16878/6 Type)
		<b>T</b> Titanium Shell, Unplated	<b>C</b> Cross-Linked Modified ETFE Insulation, Silver- Coated High-Strength Copper, MIL-W-22759/33 (Not available for #32 AWG)	<b>T</b> Female Thread				
		<b>S</b> Stainless Steel Shell, Passivated						
		<b>9P</b>						
	<b>15P</b>							
	<b>21P</b>							
	<b>25P</b>							
	<b>31P</b>							
	<b>37P</b>							
<b>51P</b>								
<b>891-002</b> Receptacle, Metal Shell, Dual Row, Socket Contacts  	Receptacles (891-002)							
		<b>9S</b>						
		<b>15S</b>						
		<b>21S</b>						
		<b>25S</b>						
		<b>31S</b>						
<b>37S</b>								
<b>51S</b>								

### Part Number Example

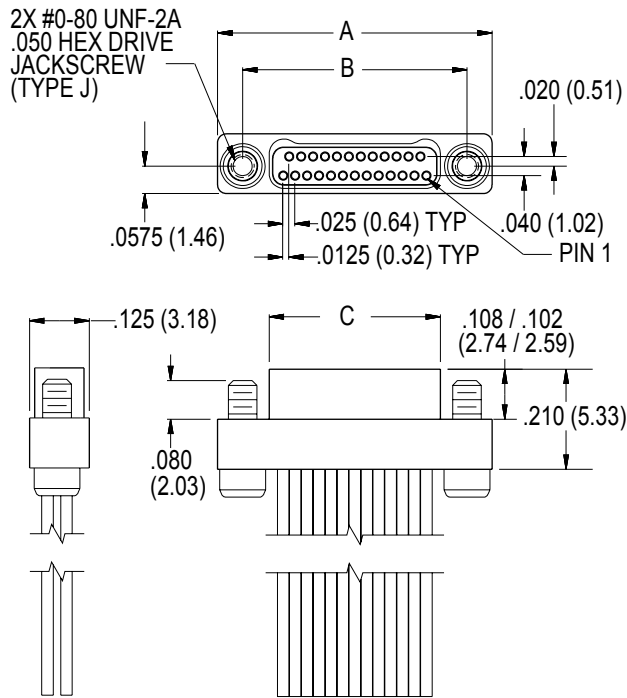
891-002	— 9S	A1	— 0	A	1	— 12	J
---------	------	----	-----	---	---	------	---

**Series 891 Nanominiature TwistPin Connectors  
Dual Row Metal Shell With Insulated Wire  
891-001 & 891-002**

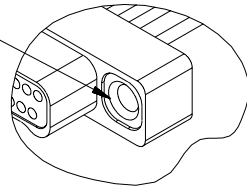


**Series 891 Dual Row Metal Shell Dimensions**

**891-001 Pin Connectors**

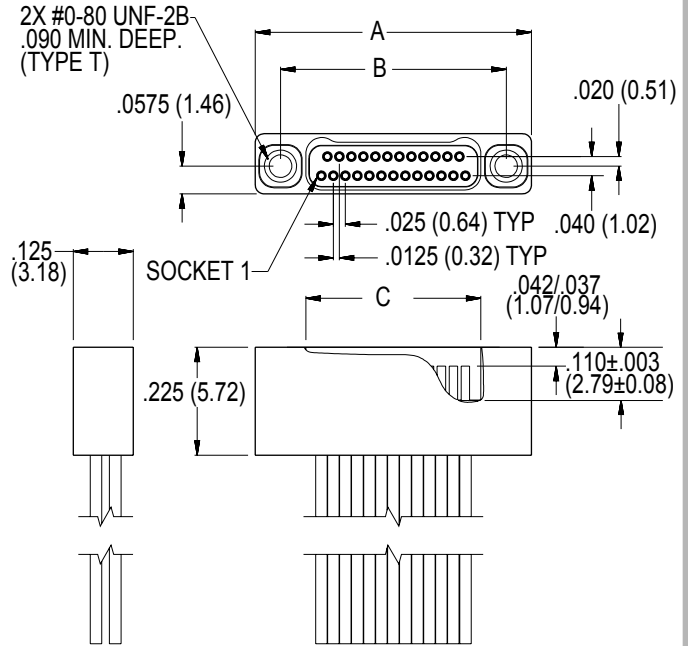


OPTIONAL  
2X #0-80 UNF-2B  
.090 MIN. THREAD  
(TYPE T)

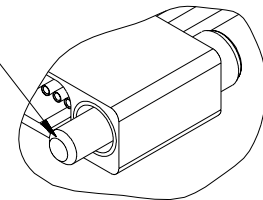


Layout	A	B BSC	C BSC
9P	.500 (12.70)	.395 (10.03)	.284 (7.21)
15P	.650 (16.51)	.545 (13.84)	.434 (11.02)
21P	.800 (20.32)	.695 (17.65)	.584 (14.83)
25P	.900 (22.86)	.795 (20.19)	.684 (17.37)
31P	1.050 (26.67)	.945 (24.00)	.834 (21.18)
37P	1.200 (30.48)	1.095 (27.814)	.984 (24.99)
51P	1.550 (39.37)	1.445 (36.70)	1.334 (33.88)

**891-002 Socket Connectors**



2X #0-80 UNF-2A  
.050 HEX DRIVE  
JACKSCREW  
(TYPE J)



Layout	A	B BSC	C BSC
9S	.500 (12.70)	.395 (10.03)	.285 (7.24)
15S	.650 (16.51)	.545 (13.84)	.435 (11.05)
21S	.800 (20.32)	.695 (17.65)	.585 (14.86)
25S	.900 (22.86)	.795 (20.19)	.685 (17.40)
31S	1.050 (26.67)	.945 (24.00)	.835 (21.21)
37S	1.200 (30.48)	1.095 (27.814)	.985 (25.02)
51S	1.550 (39.37)	1.445 (36.70)	1.335 (33.91)