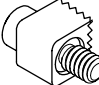
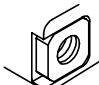


Series 890 Nanominiature TwistPin Connectors Single Row Metal Shell With Insulated Wire 890-001 & 890-002

How To Order Series 890 Connectors with Insulated Wire

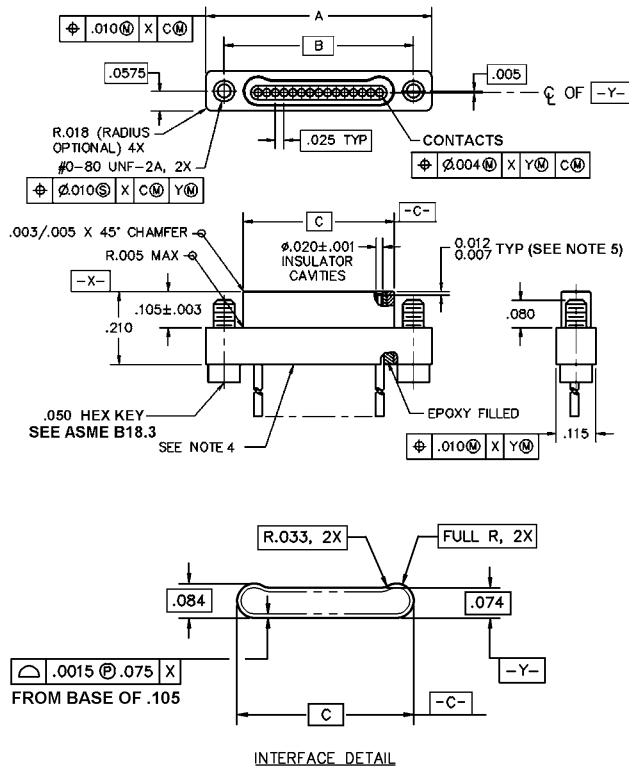
Series	Insert Arrangement/ Contact Type	Shell Matl/Finish	Wire Gauge	Wire Type	Wire Color Code	Wire length	Hardware	
890-001 Plug, Pin Contacts, Single Row	Plugs (890-001)	A1 Aluminum Shell, Cadmium Plating	0 #30 AWG	A Ultralightweight XLETPE Insulation, Silver-Coated Ultrahigh-Strength Copper (Not available for #32 AWG)	1 White 7 10 Color Repeating	Wire Length in Inches (Example: "12" for 12 inches of wire)	J Jackscrew, #0-80 Threads 	
	9P		A2 Aluminum Shell, Electroless Nickel Plating					2 #32 AWG (Wire Type B Only)
	15P							
	21P							
	25P							
	31P	T Titanium Shell, Unplated	B Extruded PTFE Insulation, Silver-Coated Copper, NEMA HP3-ETX (MIL-W-16878/6 Type)					
	37P							
	51P	S Stainless Steel Shell, Passivated	C Cross-Linked Modified ETFE Insulation, Silver- Coated High-Strength Copper, MIL-W-22759/33 (Not available for #32 AWG)	T Female Thread 				
	Receptacles (890-002)							
	9S							
15S								
21S								
890-002 Receptacle, Metal Shell, Single Row, Socket Contacts	25S							
	31S							
	37S							
	51S							

Part Number Example

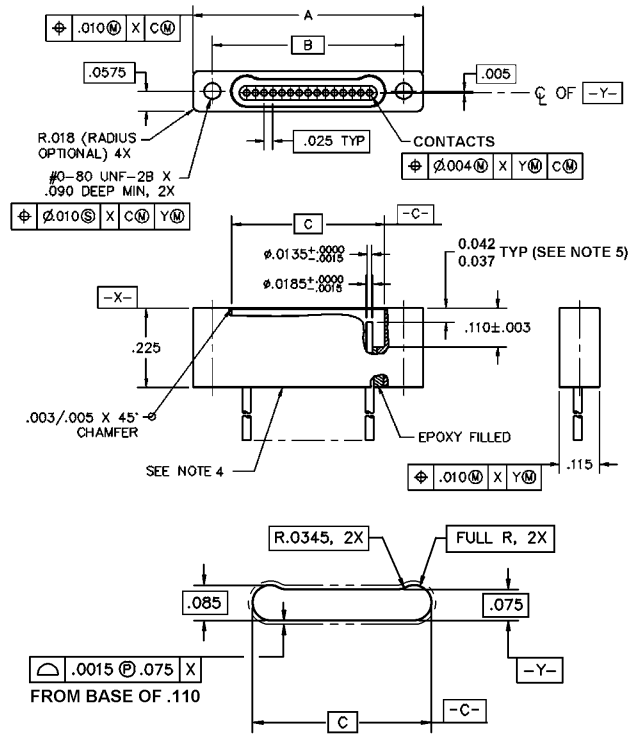
890-002	— 9S	A1	— 0	A	1	— 12	J
---------	------	----	-----	---	---	------	---

Series 890 Single Row Metal Shell Dimensions

890-001 Pin Connectors



890-002 Socket Connectors



Layout	A	B BSC	C BSC
9P	.500 (12.70)	.395 (10.03)	.284 (7.21)
15P	.650 (16.51)	.545 (13.84)	.434 (11.02)
21P	.800 (20.32)	.695 (17.65)	.584 (14.83)
25P	.900 (22.86)	.795 (20.19)	.684 (17.37)
31P	1.050 (26.67)	.945 (24.00)	.834 (21.18)
37P	1.200 (30.48)	1.095 (27.814)	.984 (24.99)
51P	1.550 (39.37)	1.445 (36.70)	1.334 (33.88)

Layout	A	B BSC	C BSC
9P	.500 (12.70)	.395 (10.03)	.285 (7.24)
15P	.650 (16.51)	.545 (13.84)	.435 (11.05)
21P	.800 (20.32)	.695 (17.65)	.585 (14.86)
25P	.900 (22.86)	.795 (20.19)	.685 (17.40)
31P	1.050 (26.67)	.945 (24.00)	.835 (21.21)
37P	1.200 (30.48)	1.095 (27.814)	.985 (25.02)
51P	1.550 (39.37)	1.445 (36.70)	1.335 (33.91)