

PRODUCT SELECTION GUIDE



Plugs
Page F-3



Receptacles
Page F-5



PCB/ Solder Receptacles
Page F-9



Hermetic
Page F-11



Cordsets
Page F-13



Protective Covers
Page F-15

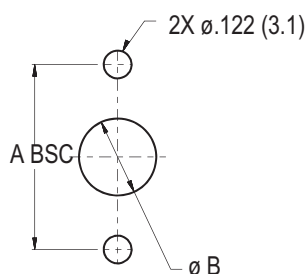
SERIES 803 CONNECTOR WEIGHTS

Layout	Plug	Jam Nut Recep.		Flange Mount Recep.	
		Crimp	PCB	Crimp	PCB
5-3 Pin	3.3	3.3	3.5	2.6	3.0
5-3 Socket	3.4	3.4	3.6	2.8	3.1
6-4 pin	4.3	3.4	3.7	2.8	3.3
6-4 Socket	4.3	3.6	3.8	2.9	3.4
6-7 Pin	4.6	4.4	4.8	3.0	4.0
6-7 Socket	4.6	4.6	5.0	3.3	4.0
7-10 Pin	6.3	6.7	7.4	4.5	5.9
7-10 Socket	6.7	7.1	7.6	4.9	6.0
8-13 Pin	7.2	7.5	8.4	5.4	7.2
8-13 Socket	7.9	8.1	8.8	6.0	7.4
9-19 Pin	8.4	8.3	9.6	6.4	9.0
9-19 Socket	9.3	9.2	10.2	7.4	9.3
10-26 Pin	10.6	11.2	13.0	8.0	11.6
10-26 Socket	12.2	12.4	13.7	9.2	11.9
12-37 Pin	13.6	14.4	16.9	9.9	14.9
12-37 Socket	15.1	15.9	17.8	11.3	15.2
14-55 Pin	17.8	19.0	22.8	13.3	20.8
14-55 Socket	20.5	21.7	24.6	16.0	21.7
15-85 Pin	20.6	22.0	27.8	16.4	28.0
15-85 Socket	23.5	24.9	29.3	19.3	28.1

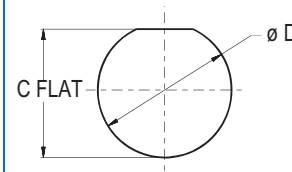
Weights shown include contacts. Weights are for aluminum shell versions. Maximum weight in grams.

SERIES 803 PANEL CUTOUTS

Flange Mount



Jam Nut



Shell Size	A		Ø B		C		Ø D	
	In.	mm.	In.	mm.	± .002	± 0.08	In.	mm.
5	.513	13.03	.395	10.03	.360	9.14	.385	9.78
6	.598	15.19	.458	11.63	.420	10.67	.448	11.38
7	.708	17.98	.520	13.21	.551	13.99	.573	14.55
8	.964	17.98	.592	15.04	.551	13.99	.573	14.55
9	1.017	25.83	.645	16.38	.609	15.47	.635	16.13
10	1.101	27.97	.726	18.44	.666	16.92	.698	17.73
12	1.024	26.01	.832	21.13	.859	21.82	.885	22.48
14	1.280	32.51	.945	24.00	1.038	26.37	1.075	27.31
15	1.375	34.93	1.010	25.65	1.110	28.19	1.135	28.83