

Corrosion Resistant Connectors Designed for Use in Harsh Geophysical, Marine and Oil-Patch Applications

Product Applications

Glenair's Series 22 Geo-Marine® connectors offer high-density insert arrangements for a variety of oceanographic, geophysical and other severe environmental applications. The Mated stainless steel plug and receptacle have a hydrostatic pressure sealing capacity of up to 5000 psi (345 bar), and feature a hermetic glass seal for extremely harsh environments.

Features

Series 22 Geo-Marine® hermetic connectors feature single-start stub-Acme threads for quick coupling of plug and receptacle, reducing thread fouling and binding as a result of dirt, grit and

5000 psi hydrostatic sealing when installed per recommended torque values. Gold plated nickel-iron alloy 52 solder cup contacts, available in sizes 8, 12, 16, 20 and 22, depending on the layout chosen, offer a wide selection of insert arrangement options.

Same-Day Inventory

Because Glenair makes all its hermetic connectors in-house, including the machining of shells, molding of interfacial seals and firing of hermetic components, we can offer you outstanding availability on stock products and fast turnaround on special orders.

Marine Grade Naval Bronze AMS 4640 Plug Coupling Rings

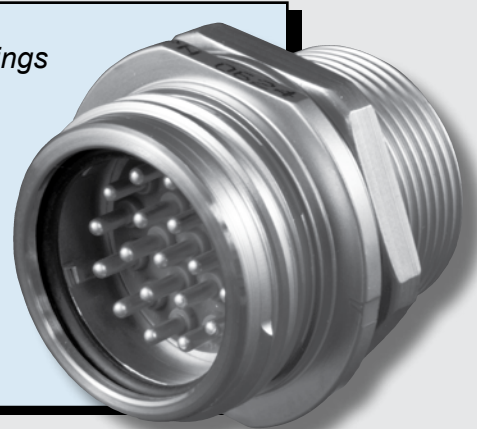
Marine Grade Alloy 316 Stainless Steel Machined Shells

Contact Layout from 2 to 128 Contacts

Anti-Vibration/Anti-Decoupling Device on All Plugs

Locksmith Keying Polarization

Full Line of Accessories: Backshells, Protective Covers and Molding Adapters



other foreign debris. Receptacles can be ordered in standard and scoop-proof shell styles for maximum design flexibility.

The full spectrum product line also includes plugs, bulkhead feed-thru connectors, connector savers and a choice of separate rear connector accessories to satisfy various cable or wire bundle termination requirements. Protective sealing covers are available for both plug and receptacle connectors and provide

Catalog contents—including part numbers, materials and dimensions—are accurate to the best of our ability when we go to print. Even so, customers are advised to consult the factory for the latest specifications, particularly to confirm critical dimensions such as connector lengths, threads, and so on. When errors or mistakes are brought to our attention, corrected content is posted immediately to www.glenair.com.