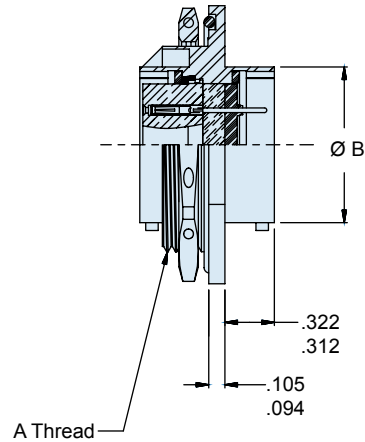
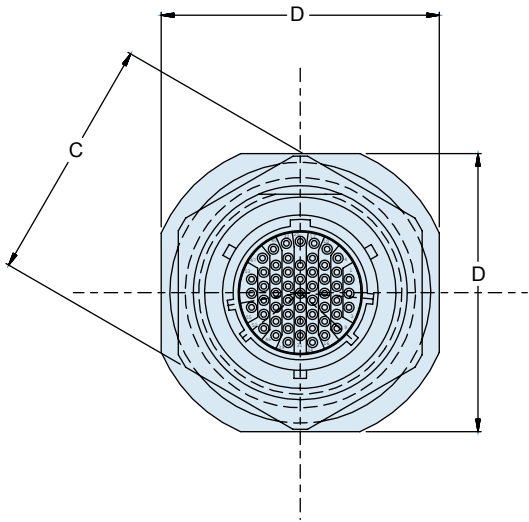
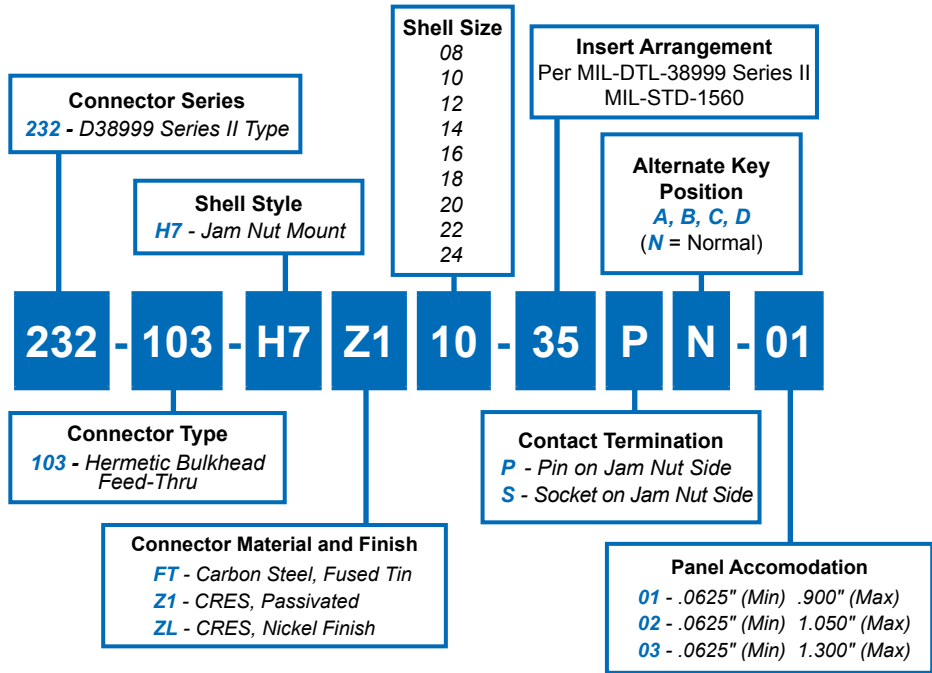


232-103-H7
Jam Nut Mount Hermetic Bulkhead Feed-Thru
MIL-DTL-38999 Series II Type

B



232-103-H7
Jam Nut Mount Hermetic Bulkhead Feed-Thru
MIL-DTL-38999 Series II Type

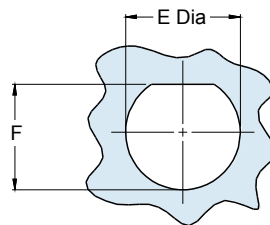


MIL-DTL
 38999 Type

B

TABLE I: CONNECTOR DIMENSIONS

SHELL SIZE	A THREAD CLASS 2A	B DIA MAX	C HEX	D FLATS	E DIA ±.005(0.1)	F +.000-.005 (0-0.1)
08	.875-20 UNEF	.474 (12.0)	1.062 (27.0)	1.250 (31.8)	.885 (22.48)	.830 (21.1)
10	1.000-20 UNEF	.591 (15.0)	1.188 (30.2)	1.375 (34.9)	1.010 (25.65)	.955 (24.3)
12	1.125-18 UNEF	.751 (19.1)	1.312 (33.3)	1.500 (38.1)	1.135 (28.83)	1.085 (27.6)
14	1.250-18 UNEF	.876 (22.3)	1.438 (36.5)	1.625 (41.3)	1.260 (32.01)	1.210 (30.7)
16	1.375-18 UNEF	1.001 (25.4)	1.562 (39.7)	1.781 (45.2)	1.385 (35.18)	1.335 (33.9)
18	1.500-18 UNEF	1.126 (28.6)	1.688 (42.9)	1.890 (48.0)	1.510 (38.35)	1.460 (37.1)
20	1.625-18 UNEF	1.251 (31.8)	1.812 (46.0)	2.016 (51.2)	1.635 (41.53)	1.585 (40.3)
22	1.750-18 UNS	1.376 (35.0)	2.000 (50.8)	2.140 (54.4)	1.760 (44.70)	1.710 (43.4)
24	1.875-16 UN	1.501 (38.1)	2.125 (54.0)	2.265 (57.5)	1.885 (47.88)	1.835 (46.6)



Recommended Panel Cut-Out

APPLICATION NOTES

- Power to a given contact on one end will result in power to contact directly opposite, regardless of identification letter.
- Hermeticity = less than 1×10^{-7} cc/sec at one atmosphere. Not for use in liquid atmosphere.
- Material/finish:
 Shell, nut – CRES/passivated, carbon steel/fused tin or CRES/nickel per QQ-N-290.
- Contacts – Gold Plated. Pin: alloy 52; Skt.: copper alloy
 Insulator – fused vitreous glass/N.A.
 Seals – fluorosilicone rubber/N.A.