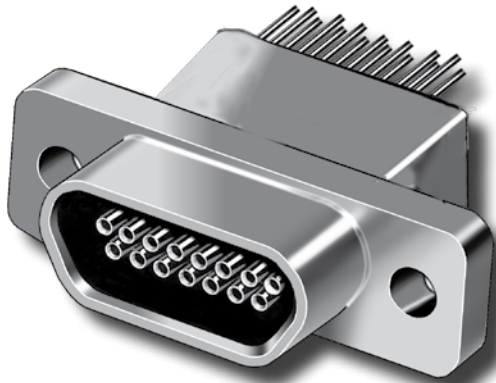


## MIL-DTL-83513 Type Micro-D Subminiature Filter Connectors



### PRODUCT FEATURES

**Glenair's Filtered Solder Cup Micro-D's** provide EMI solutions in a miniaturized M83513 type connector. These connectors feature ceramic capacitor planar arrays and ferrite inductors. Solder cups accept #26 thru #30 AWG wire, or specify oversize contacts for #24 gage wire.

**Choose Pi or C Filter Arrays** in seven filter classes and eight layouts. Glenair filtered Micro-D connectors comply with applicable MIL-DTL-83513 requirements and are 100% intermateable with standard connectors.

**Choose 9 to 67 Contacts**, with standard cadmium or nickel plating on the connector housing or choose optional finishes such as gold or chem film. Sometimes a standard part just won't do. For these situations Glenair welcomes your custom requirements. Whatever the need, we can propose a solution and back it up with rapid design and prototyping.

## The World's Only Short Lead-Time Source for Filtered Micro-D Subminiature Connectors

### Filter With Solder Cup Contacts

Available in 9, 15, 21, 25, 31, and 37 contacts, these aluminum shell filtered Micro-D connectors are backfilled with thermally conductive epoxy to allow soldering without heat damage to sensitive filter elements.

### Pre-Wired Pigtail Filter Connector

These pre-wired connectors save labor and provide added reliability. Choose from 9 to 37 contacts. Mates to standard M83513 type Micro-D connectors.

### Vertical Printed Circuit Board Micro-D Filter

Featuring a one piece aluminum shell, these thru-hole board mount connectors can be ordered with jackposts or with jackscrews for flex-to-board applications. PC terminals are .018" (0.46 mm.) diameter and are spaced .050" (1.27 mm.) apart.

### 90° Printed Circuit Board Micro-D Filter

These right angle thru-hole headers replicate the popular "CBR" .100" by .100" terminal spacing. Filter elements are housed in a wider shell. A molded rear tray withstands soldering heat and is impervious to chemicals. Terminals are encapsulated in epoxy.

### In-Line Filter Adapter

Avoid costly redesign with pin/socket feed-thru adapters. These adapters plug into any standard M83513 connector. Simply unplug your existing cable, install the filter adapter and reconnect the cable.

