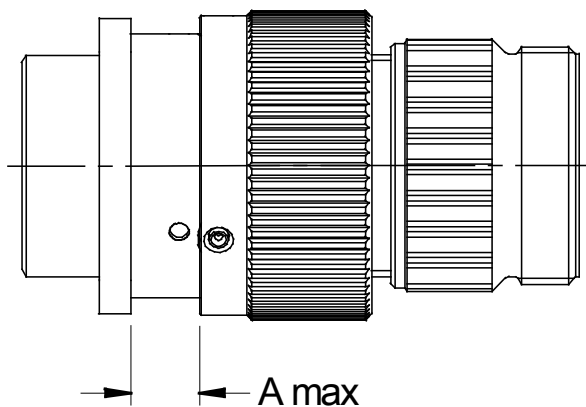




Glenair Series ITS and ITS-RG  
MIL-DTL-5015 Type Reverse Bayonet Connectors  
Panel Cut-Out Mounting Data



*Maximum Panel Thickness*

Panel thickness for type 00, 02 connectors used for rear mounting											
Shell size	10SL	14S	16S 16	18	20	22	24	28	32	36	40
<b>A</b>	3.7	3.7	3.7	3.7	3.7	3.7	5.25	5.25	6.1	6.1	6

Panel thickness for type 02PP, 03, 030 and 038 connectors (with threaded holes)											
Shell size	10SL	14S	16S 16	18	20	22	24	28	32	36	40
<b>A</b>	7.2	7.2	7.2	7.5	7.5	7.5	7.5	7.5	7.5	7.5	7.5

Panel thickness for type 02PP, 03, 030 and 038 connectors. To be used for plugs with recovered coupling nuts											
Shell size	10SL	14S	16S 16	18	20	22	24	28	32	36	40
<b>A</b>	2,5	2,5	2,5	3,2	3,2	3,2	3,2	3,2	3,2	3,2	3,2

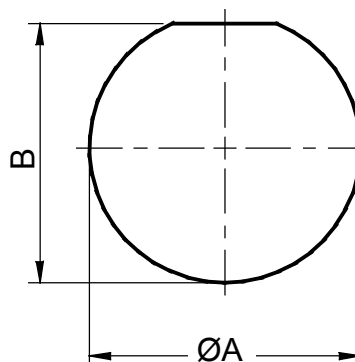
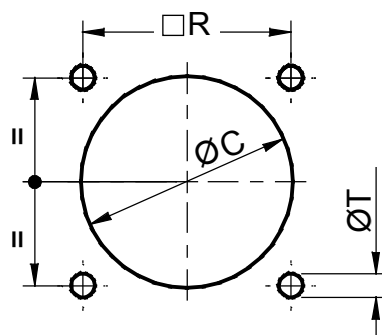
*Platings*

Requirements	In accordance with RoHS					Not In accordance with RoHS	
	F2 Electrolytic Nickel	F6 Black non conductive	F7 Black conductive	F11 Electroless Nickel	MT Nickel PTFE	F8 Zinc Cobalt with Olive drab passivation	G3 Cadmium with Olive drab passivation
<b>Thermal shock</b>	-40°C to 100°C	-55°C to 125°C	-55°C + 125°C	-55°C to 125°C	-65°C to 175°C	<b>-40°C to 100°C</b>	<b>-55°C to 125°C</b>
<b>Salt spray after thermal shock</b>	<b>24 h</b>	<b>500 h</b>	<b>500 h</b>	<b>48 h</b>	<b>1000 h</b>	<b>200 h</b>	<b>500 h</b>
<b>Electrical conductivity</b>	YES	NO	YES	YES	YES	YES	YES

Glenair Series ITS and ITS-RG  
MIL-DTL-5015 Type Reverse Bayonet Connectors  
Panel Cut-Out Mounting Data



*Panel Cutout*



Panel cutout for type 00, 02, 26 connectors (front panel mounting)											
Shell size	10SL	14S	16S 16	18	20	22	24	28	32	36	40
ØC	17	20	23	26.5	30.0	33	36	42	48.5	55	61
R ±0.1	18.2	23	24.6	27	29.4	31.8	34.9	39.7	44.5	49.2	55.5
ØT	3.4	3.4	3.4	3.4	3.4	3.4	3.9	3.9	4.5	4.5	4.5
Panel cutout for type 02PP, 03, 030 connectors (rear panel mounting)											
Shell size	10SL	14S	16S 16	18	20	22	24	28	32	36	40
ØC	19.1	25.5	28.3	31.7	35.0	38.3	41.8	47.6	54.3	60.5	66.4
R ±0.1	18.2	23	24.6	27	29.4	31.8	34.9	39.7	44.5	49.2	55.5
ØT	4.5	4.5	4.5	4.5	4.5	4.5	4.5	5.5	5.5	5.5	5.5
Panel cutout for type 07, 070, 078 connectors (jam nut receptacles)											
Shell size	10SL	14S	16S 16	18	20	22	24	28	32	36	40
ØA +0.25	22.4	28.75	31.95	35.1	38.30	41.45	44.65	51	57.35	63.7	70.05
B -0.35	21	27.4	30.95	33.75	36.85	40.05	43.35	49.55	55.95	62.35	68.55