

ITS 4106 RG and ITS 4106 RRG Straight Plug Assembly with Rubber-Coated Backshell for Termination of UNI4883 Rubber Conduit

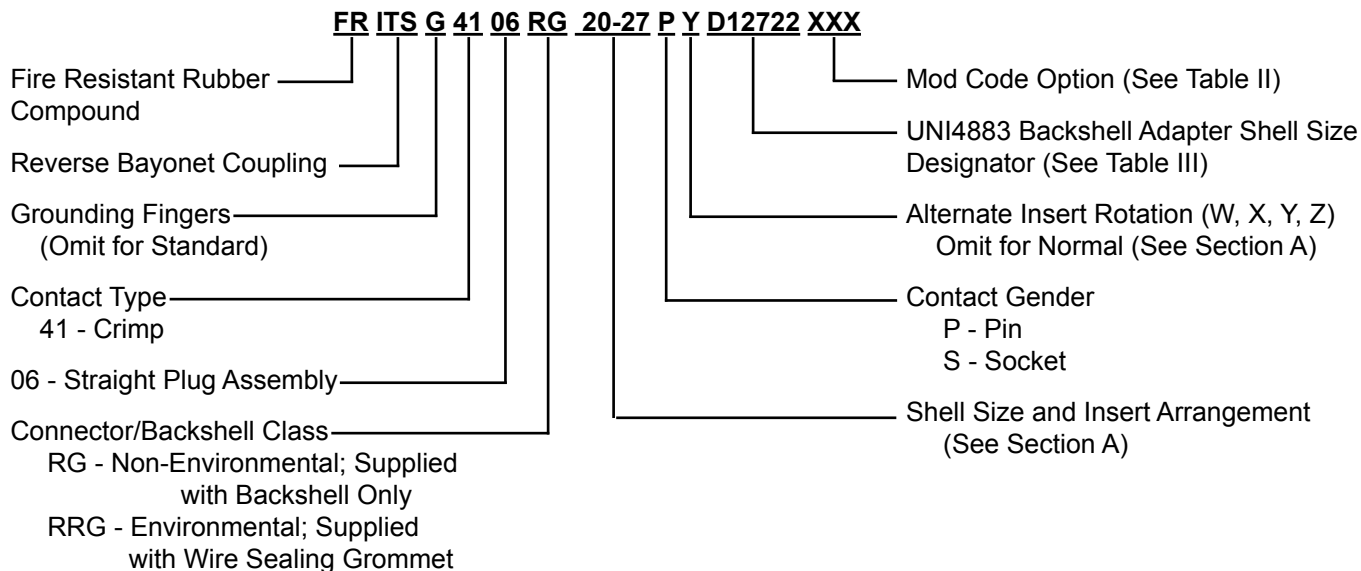
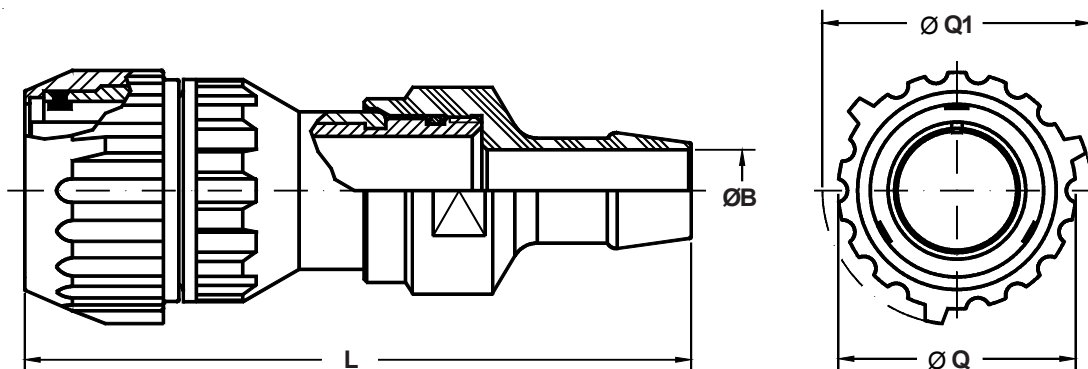


TABLE II: MODIFICATION CODES

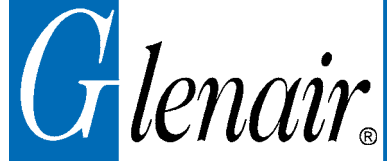
CONTACT OPTIONS	
Sym	Description
B0	Connector less contacts
B1	Connector with gold plated contacts
Omit for version Silver plated	



Application Notes:

1. Straight plug assembly with rubber-coated backshell for termination of UNI41883 type rubber conduit.
2. RG - Non-Environmental. Supplied with backshell only;
RRG - Environmental. Supplied with wire sealing grommet.
3. Standard materials configuration consists of aluminum alloy with plating ROHS compliant.
4. Standard contact material consists of copper alloy with silver plating or gold plating.
5. A broad range of additional connector accessories are available.
See our website and/or contact the factory for complete information.

**ITS 4106 RG and ITS 4106 RRG
Straight Plug Assembly
with Rubber-Coated Backshell
for Termination of UNI4883 Rubber Conduit**



Series ITS-RG

TABLE I: DIMENSIONS

Shell size	ØB	L	ØQ	ØQ1
		Max.	±0.5	±0.5
14 S	See Table III Below	-	35.0	42.0
16 S		-	38.0	45.0
16		-	38.0	45.0
18		115	43.5	49.0
20		128	46.0	51.5
22		128	50.5	56.0
24		150	54.0	60.0
28		150	61.0	67.0
32		150	68.0	76.0
36		160	74.0	82.0
40		150	80.0	88.0

TABLE III: BACKSHELL DIMENSIONS RUBBER CONDUIT

Shell Size	In accordance with UNI 4883		ØB ±0.1	±0.2
	ø Min.	ø Max.		
10SL	12.0	17.0	10.5	
18	22.0	27.0	20.5	
20 - 22	12.0	17.0	10.5	
20 - 22	22.0	27.0	20.5	
20 - 22	28.0	33.0	31.5	
24 - 28	20.0	25.0	16.5	
24 - 28	22.0	27.0	20.5	
24 - 28	26.0	31.0	22.5	
24 - 28	28.0	33.0	26.5	
24 - 28	30.0	35.0	26.5	
24 - 28	33.0	38.0	31.5	
24 - 28	45.0	50.0	36.2	
32	26.0	31.0	24.5	
32	28.0	33.0	26.5	
32	33.0	38.0	31.5	
32	35.0	40.0	31.5	
32	45.0	50.0	40.0	
36	30.0	35.0	26.5	
36	33.0	38.0	31.5	
36	35.0	40.0	31.5	
36	45.0	50.0	43.5	
40	36.0	41.0	31.5	
40	40.0	45.0	38.5	
40	45.0	50.0	43.5	
40	50.0	55.0	48.5	

