

## ITS 4106 (RG) and ITS 4106 (RRG) Straight Cylindrical Plug Connector with Rubber-Coated Cable Sealing Backshell

**FR ITS G 41 06 RG 20-27 P Y XXX**

Fire Resistant Rubber Compound

Reverse Bayonet Coupling

Grounding Fingers  
(Omit for Standard)

Contact Type  
41 - Crimp Contacts

06 - Straight Plug Connector

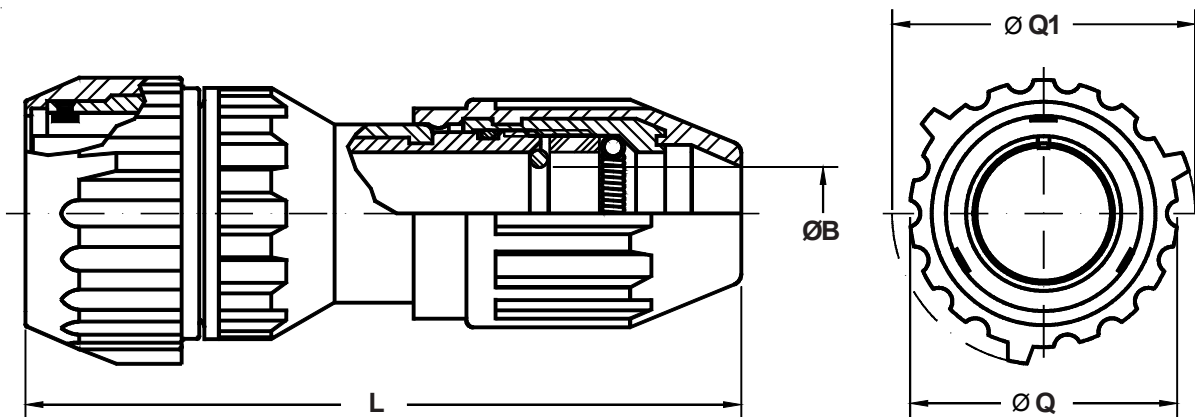
Connector/Backshell Class  
RG - Non-Environmental; Supplied with Backshell Only  
RRG - Environmental; Supplied with Wire Sealing Grommet

Mod Code Option (See Table II)

Alternate Insert Rotation (W, X, Y, Z)  
Omit for Normal (See Section A)

Contact Gender  
P - Pin  
S - Socket

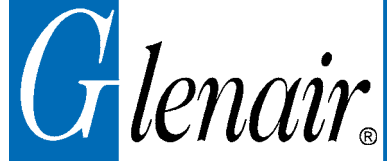
Shell Size and Insert Arrangement  
(See Section A)



### Application Notes:

1. Straight plug connector with rubber-coated cable sealing backshell with spring style strain relief for use with jacketed cables.
2. RG - Non-Environmental; Supplied with backshell only  
RRG - Environmental; Supplied with wire sealing grommet
3. Standard materials configuration consists of aluminum alloy with plating ROHS compliant.
4. Standard contact material consists of copper alloy with silver plating or gold plating.
5. A broad range of additional connector accessories are available.  
See our website and/or contact the factory for complete information.

**ITS 4106 (RG) and ITS 4106 (RRG)  
Straight Cylindrical Plug Connector  
with Rubber-Coated Cable Sealing Backshell**



**TABLE I: DIMENSIONS**

Shell Size	ØB		L	ØQ	ØQ1
	Min.	Max.	Max.	±0.5	±0.5
<b>14 S</b>	9.52	12.70	92	35.0	42.0
<b>16 S</b>	12.70	15.90	92	38.0	45.0
<b>16</b>	12.70	15.90	98	38.0	45.0
<b>18</b>	12.70	15.90	101	43.5	49.0
<b>20</b>	15.90	19.00	119	46.0	51.5
<b>22</b>	15.90	19.00	119	50.5	56.0
<b>24</b>	19.00	22.20	143	54.0	60.0
<b>28</b>	22.20	25.40	143	61.0	67.0
<b>32</b>	28.50	31.75	145	68.0	76.0
<b>36</b>	31.75	34.90	155	74.0	82.0
<b>40</b>	38.00	41.27	157	80.0	88.0

**TABLE II: MODIFICATION CODES**

CONTACT OPTIONS	
Sym	Description
B0	Connector less contacts
B1	Connector with gold plated contacts
<b>Omit for version Silver plated</b>	

