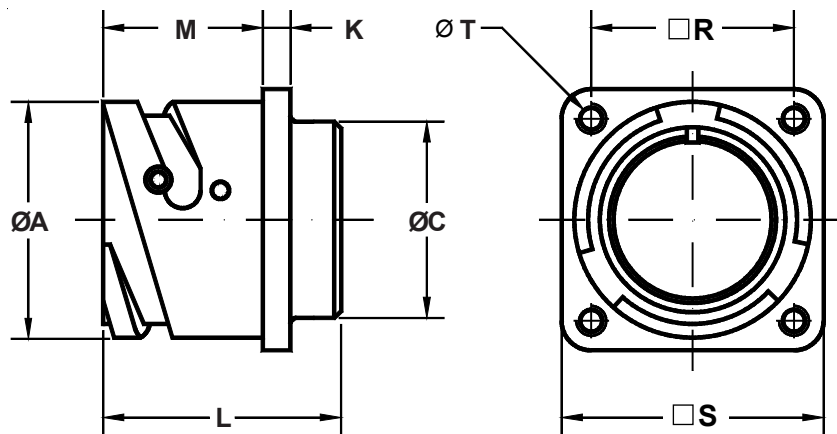


ITS 4103 (A) and ITS 4103 (R) Rear Panel Mount Square Flange Receptacle No Accessory Threads

FR ITS 41 03 A FP 20-27 P Y XXX

| | |
|--|---|
| <p>Fire Resistant Rubber Compound —————</p> <p>Reverse Bayonet Coupling —————</p> <p>Contact Type —————</p> <p style="padding-left: 20px;">41 - Crimp</p> <p>02 - Rear Box Mount —————</p> <p>Connector Class —————</p> <p style="padding-left: 20px;">A - General Duty</p> <p style="padding-left: 20px;">R - Sealed Insulator</p> <p>Mounting Holes —————</p> <p style="padding-left: 20px;">FP - Non-Threaded Through Mounting Holes</p> <p style="padding-left: 20px;">OMIT - For Standard (Threaded) Mounting Holes</p> | <p>Mod Code Option (See Table II)</p> <p>Alternate Insert Rotation (W, X, Y, Z) Omit for Normal (See Section A)</p> <p>Contact Gender</p> <p style="padding-left: 20px;">P - Pin</p> <p style="padding-left: 20px;">S - Socket</p> <p>Shell Size and Insert Arrangement (See Section A)</p> |
|--|---|



Application Notes:

1. Rear panel mount square flange receptacle—No accessory threads. Through mounting holes. Optional non-threaded mounting holes available.
2. Non-environmental (no grommet supplied).
3. Standard materials configuration consists of aluminum alloy with plating ROHS compliant.
4. Standard contact material consists of copper alloy with silver plating or gold plating.

**ITS 4103 (A) and ITS 4103 (R)
Rear Panel Mount Square Flange Receptacle
No Accessory Threads**

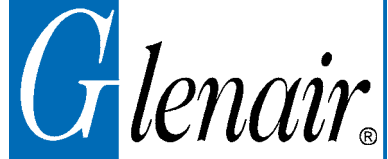


TABLE I: DIMENSIONS

| Shell Size | ØA +0 -0.1 | K ±0.2 | L ±0.3 | M +0.2 -0 | R ±0.1 | S +0.2 | T Thread |
|--------------|------------------|-----------|-----------|-----------------|-----------|-----------|----------|
| 10 SL | 18.2 | 2.8 | 37.5 | 14.3 | 18.25 | 25.4 | M4 |
| 14 S | 24.5 | 3.3 | 37.5 | 14.5 | 23.00 | 30.4 | M4 |
| 16 S | 27.2 | 3.3 | 37.5 | 14.5 | 24.60 | 32.5 | M4 |
| 16 | 27.2 | 3.3 | 50.6 | 19.1 | 24.60 | 32.5 | M4 |
| 18 | 30.7 | 4.0 | 51.4 | 19.1 | 27.00 | 35.0 | M4 |
| 20 | 34.0 | 4.0 | 51.4 | 19.1 | 29.40 | 38.0 | M4 |
| 22 | 37.3 | 4.0 | 51.4 | 19.6 | 31.75 | 41.0 | M4 |
| 24 | 40.9 | 4.0 | 51.4 | 20.6 | 34.90 | 44.5 | M4 |
| 28 | 46.7 | 4.0 | 51.4 | 20.7 | 39.70 | 50.9 | M5 |
| 32 | 53.4 | 4.0 | 51.4 | 22.3 | 44.45 | 57.0 | M5 |
| 36 | 59.6 | 4.0 | 51.4 | 22.3 | 49.20 | 63.5 | M5 |
| 40 | 65.5 | 4.0 | 51.4 | 22.3 | 55.55 | 69.9 | M5 |

TABLE II: MODIFICATION CODES

| CONTACT OPTIONS | |
|--------------------------------|-------------------------------------|
| Sym | Description |
| B0 | Connector less contacts |
| B1 | Connector with gold plated contacts |
| Omit for version Silver plated | |