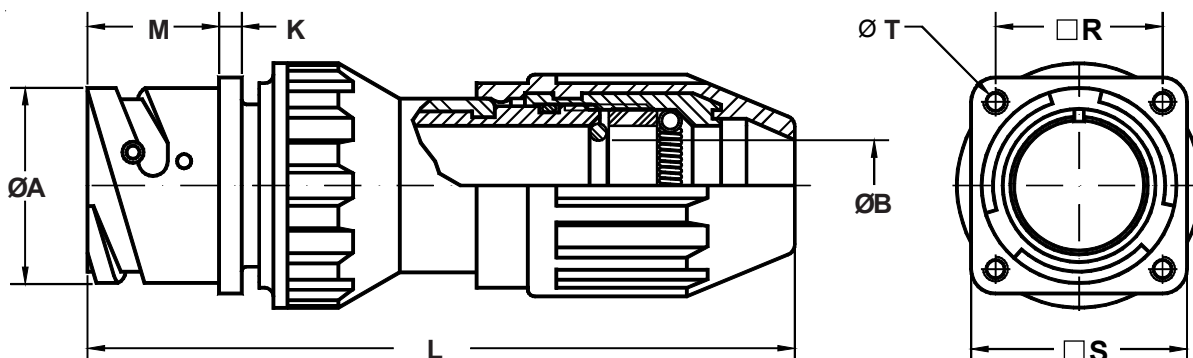


ITS 41030 (RG) and ITS 41030 (RRG) Rear Panel Mount Square Flange Receptacle with Rubber-Coated Cable Sealing Backshell

FR ITS 41 030 RG FP 20-27 P Y XXX

<p>Fire Resistant Rubber Compound</p> <p>Reverse Bayonet Coupling</p> <p>Contact Type 41 - Crimp</p> <p>030 - Rear Wall Mount</p> <p>Connector/Backshell Class RG - Non-Environmental; Supplied with Backshell Only RRG - Environmental; Supplied with Wire Sealing Grommet</p>	<p>Mod Code Option (See Table II)</p> <p>Alternate Insert Rotation (W, X, Y, Z) Omit for Normal (See Section A)</p> <p>Contact Gender P - Pin S - Socket</p> <p>Shell Size and Insert Arrangement (See Section A)</p> <p>Mounting Holes FP - Non-Threaded Through Mounting Holes OMIT - For Standard (Threaded) Mounting Holes</p>
---	--



Application Notes:

1. Rear panel mount square flange receptacle assembly with rubber-coated cable sealing backshell with spring style strain relief for use with jacketed cables. Through mounting holes. Optional non-threaded mounting holes available.
2. RG - Non-Environmental; Supplied with backshell only
RRG - Environmental; Supplied with wire sealing grommet
3. Standard materials configuration consists of aluminum alloy with plating ROHS compliant.
4. Standard contact material consists of copper alloy with silver plating or gold plating.
5. A broad range of additional connector accessories are available.
See our website and/or contact the factory for complete information.

**ITS 41030 (RG) and ITS 41030 (RRG)
Rear Panel Mount Square Flange Receptacle
with Rubber-Coated Cable Sealing Backshell**



TABLE I: DIMENSIONS

Shell Size	ØA +0 -0.1	ØB		K ±0.2	L Max.	M +0.2 -0	R ±0.1	S ±0.2	T Thread
		Min.	Max.						
14 S	24.5	9.52	12.70	3.3	90	18.5	23.00	30.4	M4
16 S	27.2	12.70	15.90	3.3	95	18.5	24.60	32.5	M4
16	27.2	12.70	15.90	3.3	95	23.2	24.60	32.5	M4
18	30.7	12.70	15.90	4.0	106	23.2	27.00	35.0	M4
20	34.0	15.90	19.00	4.0	124	23.2	29.40	38.0	M4
22	37.3	15.90	19.00	4.0	124	23.2	31.75	41.0	M4
24	40.9	19.00	22.20	4.0	145	23.2	34.90	44.5	M4
28	46.7	22.20	25.40	4.0	145	24.4	39.70	50.9	M5
32	53.4	28.50	31.75	4.0	147	24.2	44.45	57.0	M5
36	59.6	31.75	34.90	4.0	156	24.2	49.20	63.5	M5
40	65.5	38.00	41.27	4.0	158	24.4	55.55	69.9	M5

TABLE II: MODIFICATION CODES

CONTACT OPTIONS	
Sym	Description
B0	Connector less contacts
B1	Connector with gold plated contacts
Omit for version Silver plated	

