

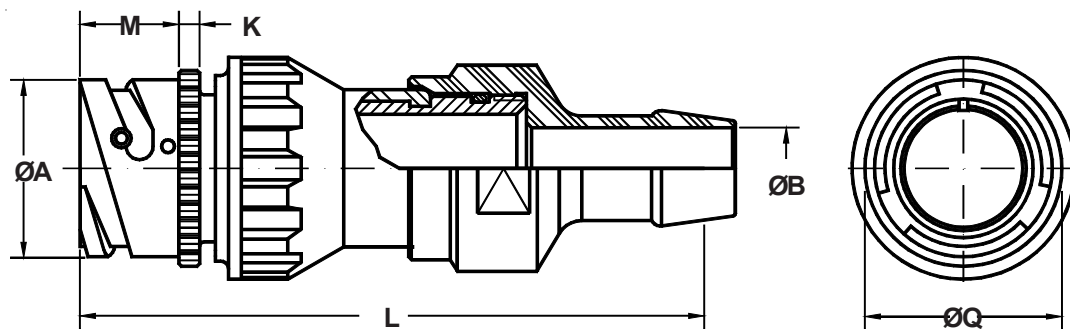
ITS 4101 RG (D1) and ITS 4101 RRG (D1) Cylindrical In-Line Receptacle Assembly with Rubber-Coated Backshell for Termination of UNI4883 Rubber Conduit

FR ITS 41 01 RG 20-27 P Y D12722 XXX

<p>Fire Resistant Rubber Compound</p> <p>Reverse Bayonet Coupling</p> <p>Contact Type 41 - Crimp</p> <p>01 - In-Line Receptacle Assembly</p> <p>Connector/Backshell Class RG - Non-Environmental; Supplied with Backshell Only RRG - Environmental; Supplied with Wire Sealing Grommet</p>	<p>Mod Code Option (See Table II)</p> <p>UNI4883 Backshell Adapter Shell Size Designator (See Table III)</p> <p>Alternate Insert Rotation (W, X, Y, Z) Omit for Normal (See Section A)</p> <p>Contact Gender P - Pin S - Socket</p> <p>Shell Size and Insert Arrangement (See Section A)</p>
--	--

TABLE II: MODIFICATION CODES

CONTACT OPTIONS	
Sym	Description
B0	Connector less contacts
B1	Connector with gold plated contacts
Omit for version Silver plated	



Application Notes:

1. In-line receptacle assembly with rear backshell for termination of UNI41883 type rubber conduit.
2. RG - Non-Environmental; Supplied with backshell only
RRG - Environmental; Supplied with wire sealing grommet
3. Standard materials configuration consists of aluminum alloy with plating ROHS compliant.
4. Standard contact material consists of copper alloy with silver plating or gold plating.
5. A broad range of additional connector accessories are available.
See our website and/or contact the factory for complete information.

**ITS 4101 RG (D1) and ITS 4101 RRG (D1)
Cylindrical In-Line Receptacle Assembly
with Rubber-Coated Backshell
for Termination of UNI4883 Rubber Conduit**



Series ITS-RG

TABLE I: DIMENSIONS

Shell Size	ØA +0 -0.1	ØB	K ±0.2	L Max.	M +0.2 -0	ØQ ±0.1
14 S	24.5	See Table III Below	3.3	85	14.5	28.8
16 S	27.2		3.3	90	14.5	30.5
16	27.2		3.3	90	19.1	30.5
18	30.7		4.0	101	19.1	33.8
20	34.0		4.0	119	19.1	36.9
22	37.3		4.0	119	19.6	39.5
24	40.9		4.0	140	20.6	43.9
28	46.7		4.0	140	20.7	48.4
32	53.4		4.0	142	22.3	56.0
36	59.6		4.0	151	22.3	62.4
40	65.5		4.0	153	22.3	68.6

TABLE III: BACKSHELL DIMENSIONS RUBBER CONDUIT

Shell Size	In accordance with UNI 4883		ØB ±0.1	±0.2
	ø Min.	ø Max.		
10SL	12.0	17.0	10.5	
18	22.0	27.0	20.5	
20 - 22	12.0	17.0	10.5	
20 - 22	22.0	27.0	20.5	
20 - 22	28.0	33.0	31.5	
24 - 28	20.0	25.0	16.5	
24 - 28	22.0	27.0	20.5	
24 - 28	26.0	31.0	22.5	
24 - 28	28.0	33.0	26.5	
24 - 28	30.0	35.0	26.5	
24 - 28	33.0	38.0	31.5	
24 - 28	45.0	50.0	36.2	
32	26.0	31.0	24.5	
32	28.0	33.0	26.5	
32	33.0	38.0	31.5	
32	35.0	40.0	31.5	
32	45.0	50.0	40.0	
36	30.0	35.0	26.5	
36	33.0	38.0	31.5	
36	35.0	40.0	31.5	
36	45.0	50.0	43.5	
40	36.0	41.0	31.5	
40	40.0	45.0	38.5	
40	45.0	50.0	43.5	
40	50.0	55.0	48.5	

