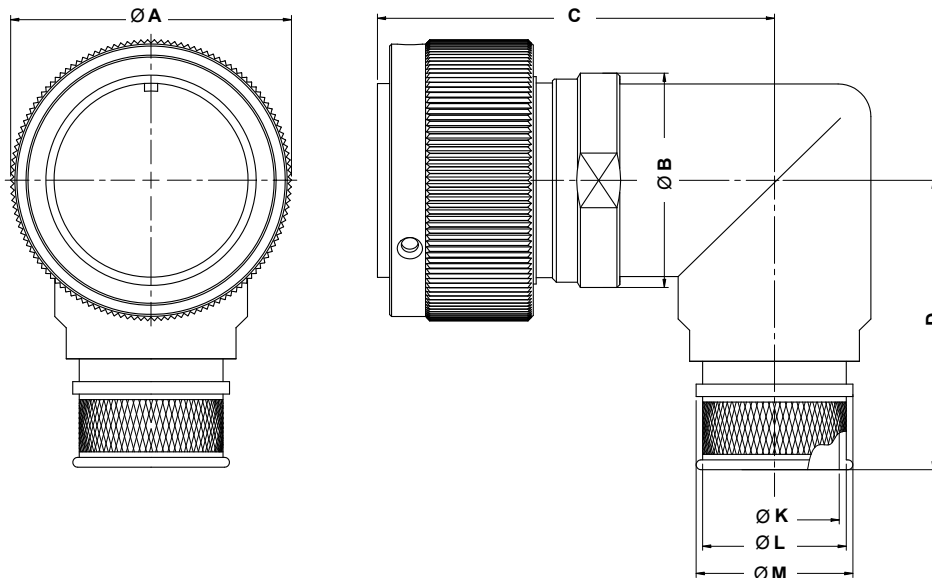


# ITS 3108 A (ZLF) and ITS 4108 A (ZLF) Cylindrical Plug Assembly with 90° BAND-IT Backshell

**ITS G 31 08 A 20-27 P Y ZLF XXX**

Reverse Bayonet Coupling	Mod Code Option (See Table II)
Grounding Finger (Omit for Standard)	BAND-IT Backshell
Contact Type 31 - Solder 41 - Crimp	Alternate Insert Rotation (W, X, Y, Z) Omit for Normal (See Section A)
08 - 90° Plug Assembly	Contact Gender P - Pin S - Socket
Connector/Backshell Class A - Non-environmental; Supplied with Backshell only R - Environmental; Supplied with Backshell and Grommet	Shell Size and Insert Arrangement (See Section A)



### Application Notes:

1. Straight cylindrical plug assembly with backshell for attachment of BAND-IT.
2. Connector/Backshell Class "A" (non-environmental)—Not supplied with wire sealing grommet; Class "R" (environmental)—Supplied with backshell and grommet.
3. Standard materials configuration consists of aluminum alloy. For platings, see TABLE II finish options.
4. Standard contact material consists of copper alloy with silver plating or gold plating.
5. A broad range of additional connector accessories are available. See our website and/or contact the factory for complete information.
6. Standard insert material is synthetic rubber. Add "FR" prefix to front of part number to specify fire resistant inserts.

**ITS 3108 A (ZLF) and ITS 4108 A (ZLF)  
Cylindrical Plug Assembly  
with 90° BAND-IT Backshell**



**TABLE I: DIMENSIONS**

Shell size	P.N. entry	ØA	ØB	C max	D max	Entry size
10 SL	10	24.7	20.8	29.0	53.0	01÷06
14 S	14	24.7	27.3	41.0	54.5	03÷08
16 S	16	24.7	29.8	45.0	55.0	05÷10
18	18	34.25	34.3	53.0	60.0	07÷12
20	20	34.25	38.3	62.0	63.0	09÷14
22	22	34.25	41.3	62.0	63.0	11÷16
24	24	35.85	44.8	68.0	68.0	12÷17
28	28	35.65	51.3	68.0	69.0	13÷19
32	32	37.45	58.3	72.0	76.5	17÷22
36	36	37.45	66.2	75.0	78.5	19÷23
40	40	37.45	70.8	80.0	83.0	21÷24

**TABLE III: ENTRY SIZE TABLE**

Entry size	ØK	ØL	ØM
01	3.2	6.4	7.9
02	4.8	7.9	9.5
03	6.4	9.5	11.1
04	7.9	11.1	12.7
05	9.5	12.7	14.3
06	11.1	14.3	15.8
07	12.7	15.9	17.4
08	14.3	17.5	19.1
09	15.9	19.1	20.6
10	17.5	20.6	22.2
11	19.1	22.2	23.8
12	20.6	23.8	25.4
13	22.2	25.4	27.0
14	23.8	27.0	28.5
15	25.4	28.6	30.1
16	27.0	30.2	31.8
17	28.6	31.8	33.3
18	31.8	34.9	36.5
19	34.9	38.1	39.7
20	38.1	41.3	42.8
21	41.3	44.5	46.0
22	44.5	47.6	49.2
23	47.6	50.8	52.4
24	50.8	54.0	55.5

**TABLE II: MODIFICATION CODES**

CONTACT OPTIONS	
Sym	Description
B0	Connector Less Contacts
B1	Connector with Gold Plated Contacts
Omit for standard version (Silver plated)	
FINISH OPTIONS	
Sym	Description and RoHS compliant (*)
F2	Bright Nickel Plating (*)
F6	Black Electrodeposited Paint (*)
F7	Black Zn-Co Plating (*)
F8	Olive Drab Zn-Co Plating
F11	Electroless Nickel (*)
Omit for standard version (Cadmium Olive Drab Finish)	