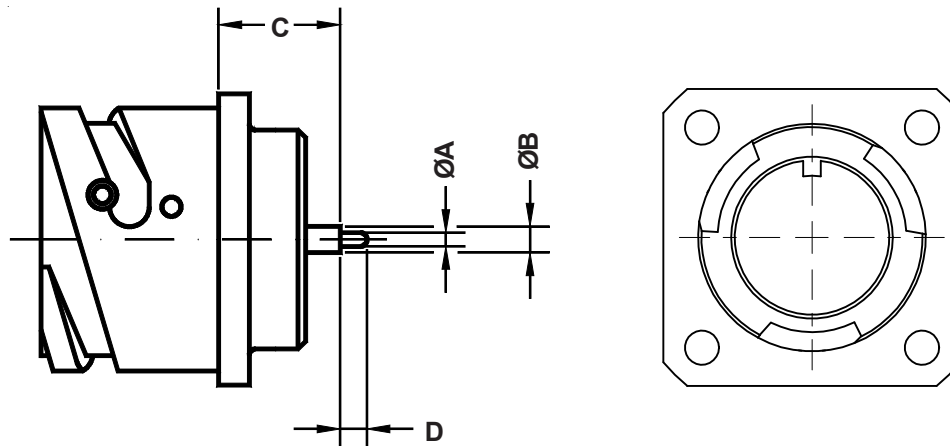
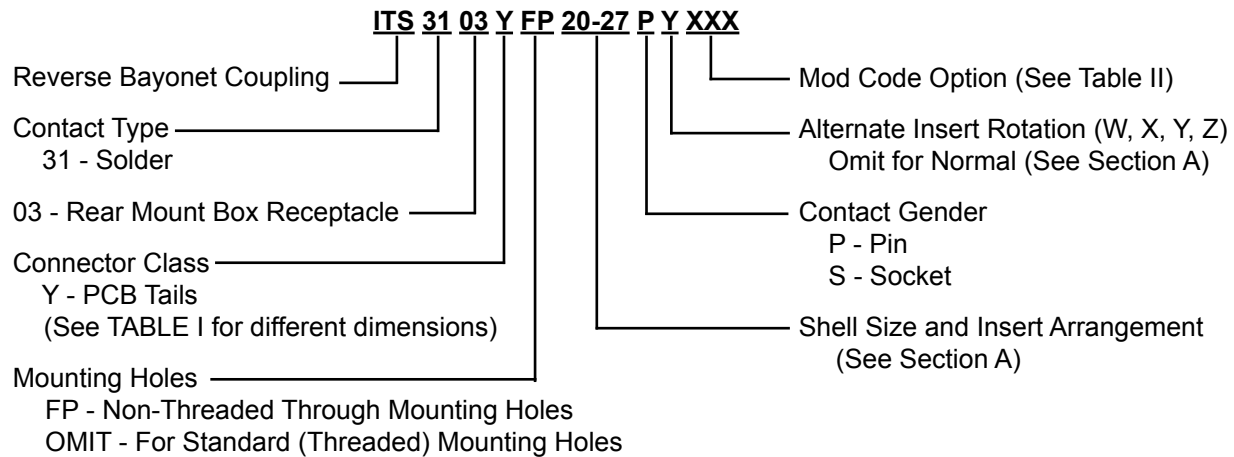


# ITS 3103 (Y)

## Rear Panel Mount Square Flange Receptacle with PCB Contacts No Accessory Threads



### Application Notes:

1. Rear panel mount square flange receptacle with PCB contacts—no accessory threads. Threaded mounting holes standard. Optional non-threaded through mounting holes available. Contact factory for custom tail lengths.
2. Standard materials configuration consists of aluminum alloy. For platings, see TABLE II finish options.
3. Standard contact material consists of copper alloy with silver plating or gold plating.
4. A broad range of other front and rear connector accessories are available. See our website and/or contact the factory for complete information.

**ITS 3103 (Y)**  
**Rear Panel Mount Square Flange Receptacle**  
**with PCB Contacts**  
**No Accessory Threads**



**TABLE I: Y SIZE 16 AND 12 CONTACTS**

Shell size	Y#12				Y#16			
	A	B	C	D	A	B	C	D
10 SL	-	-	-	-	-	-	-	-
14 S	-	-	-	-	-	-	-	-
16 S	-	-	-	-	-	-	-	-
16	1.8	3.4	16.85	3.5	0.8	1.8	16.85	3.5
18	1.8	3.4	16.85	3.5	0.8	1.8	16.85	3.5
20	1.8	3.4	16.85	3.5	0.8	1.8	16.85	3.5
22	1.8	3.4	16.85	3.5	0.8	1.8	16.85	3.5
24	1.8	3.4	16.85	3.5	0.8	1.8	16.85	3.5
28	1.8	3.4	16.55	3.5	0.8	1.8	16.55	3.5
32	1.8	3.4	15.95	3.5	0.8	1.8	15.95	3.5
36	1.8	3.4	15.95	3.5	0.8	1.8	15.95	3.5
40	1.8	3.4	15.75	3.5	0.8	1.8	15.75	3.5

Please consult the factory for different PCB tail lengths

**TABLE II: OTHER CONTACTS - SIZE 16 ONLY**

Shell size	DS1				YL5				YL7			
	A	B	C	D	A	B	C	D	A	B	C	D
10 SL	0.8	1.8	12.40	3.6	-	-	-	-	-	-	-	-
14 S	0.8	1.8	11.70	3.6	-	-	-	-	-	-	-	-
16 S	0.8	1.8	11.70	3.6	-	-	-	-	-	-	-	-
16	0.8	1.8	13.60	3.6	0.8	1.8	16.85	5.0	0.8	1.8	13.35	7.0
18	0.8	1.8	13.60	3.6	0.8	1.8	16.85	5.0	0.8	1.8	13.35	7.0
20	0.8	1.8	13.60	3.6	0.8	1.8	16.85	5.0	0.8	1.8	13.35	7.0
22	0.8	1.8	13.60	3.6	0.8	1.8	16.85	5.0	0.8	1.8	13.35	7.0
24	0.8	1.8	13.60	3.6	0.8	1.8	16.85	5.0	0.8	1.8	13.35	7.0
28	0.8	1.8	13.30	3.6	0.8	1.8	15.75	5.0	0.8	1.8	12.25	7.0
32	-	-	-	-	0.8	1.8	18.80	5.0	-	-	-	-
36	-	-	-	-	0.8	1.8	18.80	5.0	-	-	-	-
40	-	-	-	-	0.8	1.8	18.80	5.0	-	-	-	-

**TABLE III: FINISH OPTIONS**

Sym	Description and RoHS compliant (*)
F2	Bright Nickel Plating (*)
F6	Black Electrodeposited Paint (*)
F7	Black Zn-Co Plating (*)
F8	Olive Drab Zn-Co Plating
F11	Electroless Nickel (*)
	<b>Omit for standard version</b> <b>(Cadmium Olive Drab Finish)</b>

**TABLE IV: MODIFICATION CODES**

CONTACT OPTIONS	
Sym	Description
B1	Connector with Gold Plated Contacts
	<b>Omit for standard version (Silver plated)</b>

