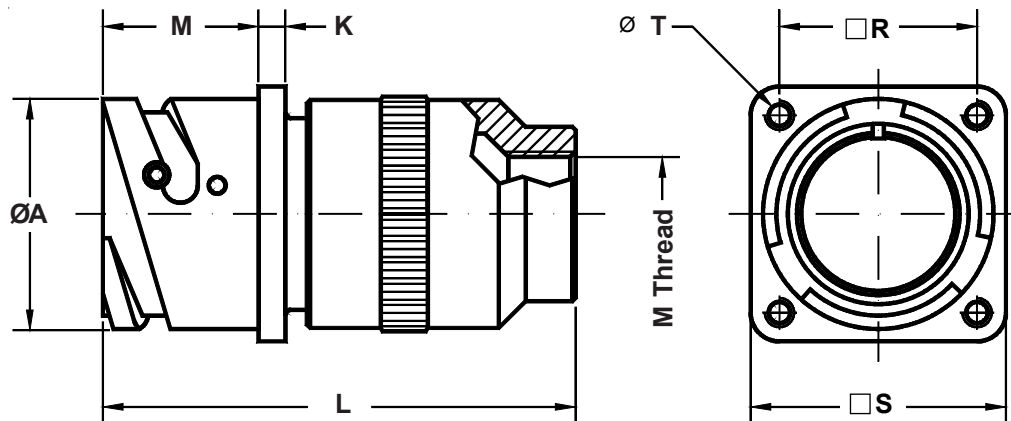


## ITS 31030 A (M) and ITS 41030 A (M)

### Rear Panel Mount Square Flange Receptacle Assembly with Backshell for Use with Metric Cable Glands

**ITS 31 030 A FP 20-27 P Y M25 XXX**

Reverse Bayonet Coupling	Mod Code Option (See Table II)
Contact Type 31 - Solder 41 - Crimp	Metric Thread
030 - Rear Wall Mount	Alternate Insert Rotation (W, X, Y, Z) Omit for Normal (See Section A)
Connector/Backshell Class A - Non-Environmental; Supplied with Backshell Only R - Environmental; Supplied with Grommet	Contact Gender P - Pin S - Socket
Mounting Holes FP - Non-Threaded Through Mounting Holes OMIT - For Standard (Threaded) Mounting Holes	Shell Size and Insert Arrangement (See Section A)



#### Application Notes:

- Rear panel mount square flange receptacle with backshell for the attachment of metric thread cable glands. Metric cable glands not included. Threaded mounting holes standard. Optional non-threaded mounting holes available.
- Connector/Backshell Class "A" (non-environmental)—Not supplied with wire sealing grommet;  
Class "R" (environmental)—Supplied with backshell and grommet.
- Standard materials configuration consists of aluminum alloy. For platings, see TABLE II finish options.
- Standard contact material consists of copper alloy with silver plating or gold plating.
- A broad range of metric connector accessories are available.  
See our website and/or contact the factory for complete information.
- Standard insert material is synthetic rubber.  
Add "FR" prefix to front of part number to specify fire resistant inserts.

**ITS 31030 A (M) and ITS 41030 A (M)**  
**Rear Panel Mount Square Flange Receptacle Assembly**  
**with Backshell for Use with Metric Cable Glands**



**TABLE I: DIMENSIONS**

Shell Size	ØA +0 -0.1	C Max.	K ±0.2	L Max.	M +0.2 -0	M Thread Other M Threads available on request	R ±0.1	S +0.2	T Thread
<b>10 SL</b>	18.2	55.0	2.8	81.0	18.5	M12x1,5	18.25	25.4	M4
<b>14 S</b>	24.5	57.5	3.3	86.5	18.5	M16x1,5	23.00	30.4	M4
<b>16 S</b>	27.2	57.5	3.3	88.5	18.5	M16x1,5	24.60	32.5	M4
<b>16</b>	27.2	66.0	3.3	97.0	23.2	M16x1,5	24.60	32.5	M4
<b>18</b>	30.7	71.5	4.0	106.5	23.2	M20x1,5	27.00	35.0	M4
<b>20</b>	34.0	74.5	4.0	109.5	23.2	M25x1,5	29.40	38.0	M4
<b>22</b>	37.3	74.5	4.0	109.5	23.2	M25x1,5	31.75	41.0	M4
<b>24</b>	40.9	76.5	4.0	115.5	23.2	M32x1,5	34.90	44.5	M4
<b>28</b>	46.7	81.5	4.0	120.5	24.4	M32x1,5	39.70	50.9	M5
<b>32</b>	53.4	87.5	4.0	126.5	24.2	M36x1,5	44.45	57.0	M5
<b>36</b>	59.6	92.5	4.0	141.5	24.2	M40x1,5	49.20	63.5	M5
<b>40</b>	65.5	97.5	4.0	145.5	24.4	M48x1,5	55.55	69.9	M5

**B**

**TABLE II: MODIFICATION CODES**

<b>CONTACT OPTIONS</b>	
Sym	Description
B0	Connector Less Contacts
B1	Connector with Gold Plated Contacts
Omit for standard version (Silver plated)	
<b>FINISH OPTIONS</b>	
Sym	Description and RoHS compliant (*)
F2	Bright Nickel Plating (*)
F6	Black Electrodeposited Paint (*)
F7	Black Zn-Co Plating (*)
F8	Olive Drab Zn-Co Plating
F11	Electroless Nickel (*)
Omit for standard version (Cadmium Olive Drab Finish)	