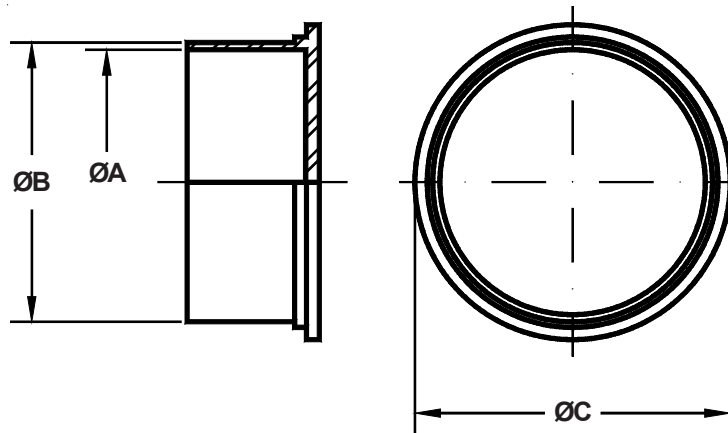


TABLE II: RECEPTACLE PLASTIC DUST CAP  
 PART NUMBERS, SHELL SIZE AND DIMENSIONS

| Part Number | Shell size          | ØA<br>±0.25 | ØB<br>±0.25 | ØC<br>±0.78 |
|-------------|---------------------|-------------|-------------|-------------|
| TP02-10SL   | Receptacle 10SL     | 18.00       | 20.60       | 25.00       |
| TP02-14S    | Receptacle 14S      | 24.40       | 27.05       | 30.00       |
| IT90376-18Y | Receptacle 16S - 16 | 26.11       | 27.63       | 31.75       |
| TP02-18     | Receptacle 18       | 30.40       | 33.15       | 37.00       |
| IT90376-22R | Receptacle 20       | 34.04       | 35.81       | 40.38       |
| IT90376-24R | Receptacle 22       | 37.16       | 38.94       | 43.18       |
| TP02-24     | Receptacle 24       | 40.65       | 43.20       | 47.00       |
| TP02-28     | Receptacle 28       | 46.45       | 49.05       | 52.00       |
| TP02-32     | Receptacle 32       | 53.15       | 55.75       | 60.00       |
| TP02-36     | Receptacle 36       | 59.35       | 61.95       | 66.00       |
| TP02-40     | Receptacle 40       | 65.25       | 67.85       | 72.00       |



**Application Notes:**

1. Plastic cap for receptacle connectors for protection against dust and mechanical damage.