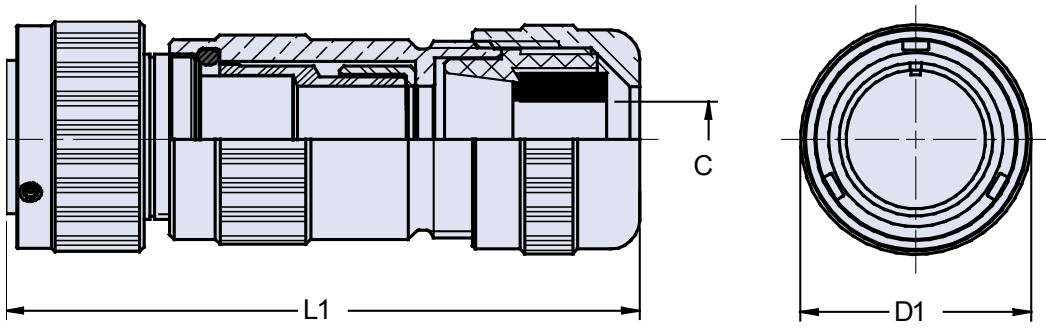
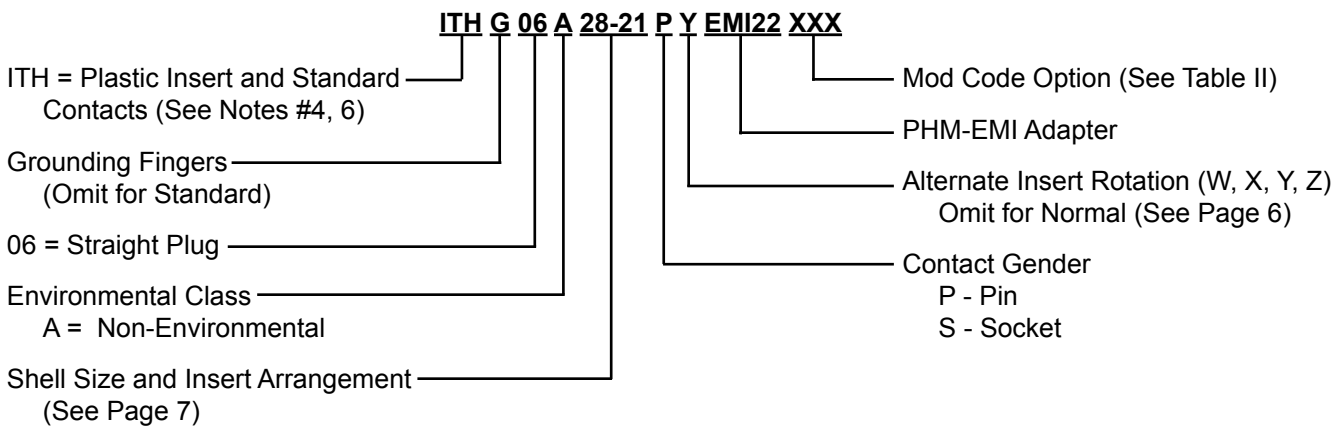




# ITH 06 A (EMI) Straight Plug Connector with Backshell for EMI Shielded and Jacketed Cable



**Application Notes:**

1. Straight plug connector with backshell to be used with shielded and jacketed cables.
2. Environmental class A (non-environmental) not supplied with grommet.
3. Standard shell materials configuration consists of aluminum alloy with cadmium free conductive plating and black passivation.
4. Standard contact material consists of copper alloy with gold plating.
5. A broad range of other front and rear connector accessories are available. See our website and/or contact the factory for complete information.
6. Standard insert material is Low fire hazard plastic UL94V0, IAW Article 3, NFF16-102, 356833.



**ITH 06 A (EMI)  
Straight Plug Connector  
with Backshell for EMI Shielded and Jacketed Cable**



**TABLE I: DIMENSIONS**

Shell size	EMI size	C		D1 ±0.2	L1 Max
		Min	Max		
18	18	2.0	16.5	36.2	85.0
20	18	2.0	16.5	39.8	85.0
22	18	2.0	16.5	43.0	85.0
24	18	2.0	16.5	46.4	90.0
28	22	15.0	20.0	53.0	90.0
	24	19.0	24.0		
32	22	15.0	20.0	60.0	100.0
	24	19.0	24.0		
36	35	23.0	35.0	66.2	110.0
40	35	23.0	35.0	72.3	110.0

**TABLE II: MODIFICATION CODES**

CONTACT OPTIONS	
Sym	Description
B0	Connector less contacts
Omit for standard version (Gold Plated Copper Alloy Contacts Supplied)	
FINISH OPTIONS	
Sym	Description
F2	Bright Nickel Plating
F6	Black Electrodeposited Paint
F8	Olive Drab Zn-Co Plating
Omit for standard version (Cad free / black passivation Finish)	

