

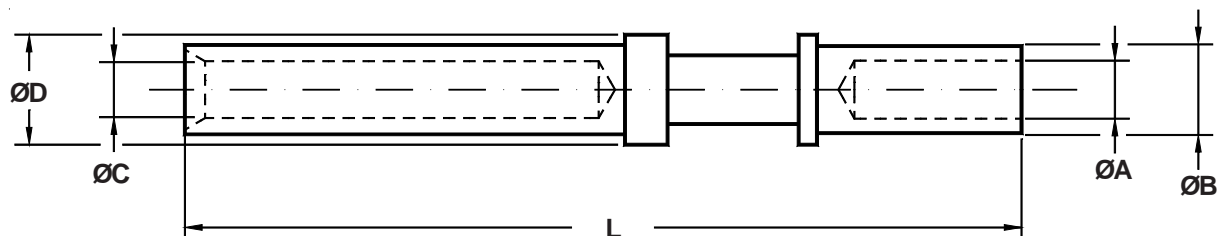
Codice Commital	Taglia	Sezione mm ²	AWG	A +0.1 -0	B ±0.1	C ±0.05	D ±0.1	L ±0.1
<i>Commital P/N</i>	<i>Size</i>							
10 - 40520 LC	20	0.5	24 / 20	1.3	1.93	1.08	2.0	36.50
10 - 40588	18	0.15 / 0.6	26 / 20	1.30	1.93	1.48	2.2	34.40
10 - 40552	16S	1 / 1.5	18 / 16	1.70	2.60	1.65	3.2	26.60
10 - 40522 TU	16S	1 / 1.5	18 / 16	1.70	2.60	1.65	3.2	26.60
10 - 40552 - 13	16S	0.15 / 0.6	26 / 20	1.30	1.93	1.65	3.2	26.65
10 - 40552 - 15	16S	1	18	1.50	2.60	1.65	3.2	26.65
10 - 40552 - 20	16S	2	14	2.00	2.90	1.65	3.2	26.65
10 - 40552 - 26	16S	3	12	2.50	3.80	1.65	3.2	26.65
10 - 40556	16	1 / 1.5	18 / 16	1.70	2.60	1.65	3.2	36.50
10 - 40556 RES	16	1 / 1.5	18 / 16	1.70	2.60	1.65	3.2	36.50
10 - 40556 TU	16	1 / 1.5	18 / 16	1.70	2.60	1.65	3.2	36.50
10 - 40556 - 08	16	0.15 / 0.2	26 / 24	0.85	1.55	1.65	3.2	36.50
10 - 40556 - 12	16	0.6	20	1.20	2.60	1.65	3.2	36.50
10 - 40556 - 13	16	0.15 / 0.6	26 / 20	1.30	1.93	1.65	3.2	36.50
10 - 40556 - 15	16	1	18	1.50	2.60	1.65	3.2	36.50
10 - 40556 - 20	16	2	14	2.00	2.90	1.65	3.2	36.50
10 - 40556 - 22 TU	16	2.5		2.20	3.80	1.65	3.2	36.20
10 - 40556 - 26	16	3	12	2.50	3.80	1.65	3.2	36.50
10 - 40556 - 32	16		32 / 28	0.45	1.95	1.65	3.2	36.50
10 - 40560	12	3	12	2.50	3.90	2.48	4.8	37.65
10 - 40560 TU	12	3	12	2.50	3.80	2.48	4.8	37.50
10 - 40560 - 12	12	0.6	20	1.20	2.60	2.48	4.8	37.65
10 - 40560 - 15	12	1	18	1.50	3.40	2.48	4.8	37.65
10 - 40560 - 20	12	1 / 2	18 / 14	2.00	3.80	2.48	4.8	37.65
10 - 40560 - 22	12	2.5		2.20	3.80	2.48	4.8	37.65
10 - 40560 - 30	12	4		3.00	4.80	2.48	4.8	37.65
10 - 40560 - 30M	12	4		3.30	4.20	2.48	4.8	37.65
10 - 40560 - 38	12	6		3.60	4.80	2.48	4.8	37.65

Consultare il nostro servizio vendite per altri tipi di contatti o per le attrezzature di crimpatura.

Please consult our sales department for other contacts or crimp tooling details.

Contatti femmina a pinzare

Socket crimp contacts



Codice Commital	Taglia	Sezione mm ²	AWG	A +0.1 -0	B ±0.1	C ±0.05	D ±0.1	L ±0.1
Commital P/N	Size							
10 - 40793	8	9	8	4.50	6.90	3.73	7.8	42.00
10 - 40793 - 1	8	9	8	4.50	6.75	3.70	7.8	40.50
10 - 40793 - 1 - 15	8	1	18	1.45	3.40	3.70	7.8	40.50
10 - 40793 - 1 - 18	8	1/2	18/14	1.80	3.80	3.70	7.8	40.50
10 - 40793 - 1 - 26	8	3	12	2.50	3.80	3.70	7.8	40.50
10 - 40793 - 1 - 30	8	4		3.00	4.80	3.70	7.8	40.50
10 - 40793 - 1 - 38	8	6		3.60	6.80	3.70	7.8	40.50
10 - 40793 - 1 - 50	8	10		5.00	6.90	3.70	7.8	40.50
10 - 40793 - 1 - 58	8	13.2	6	5.50	7.80	3.70	7.8	40.50
10 - 40793 - 50	8	10		5.00	6.90	3.70	7.8	42.00
10 - 40793 - M4	8			3.00	5.00	3.70	7.8	42.00
10 - 113474 - 4S	4	22	4	7.10	9.53	5.80	11.0	42.00
10 - 113474 - 4S - 1	4	22	4	7.10	9.53	5.80	11.0	41.00
10 - 113474 - 4S - 1 - 22	4	2.50		2.20	3.80	5.80	11.0	41.00
10 - 113474 - 4S - 1 - 26	4	3		2.50	3.80	5.80	11.0	41.00
10 - 113474 - 4S - 1 - 30	4	4		3.00	4.80	5.80	11.0	41.00
10 - 113474 - 4S - 1 - 50	4	10		5.00	7.00	5.80	11.0	41.00
10 - 113474 - 4S - 1 - 62	4	16		6.20	9.50	5.80	11.0	41.00
10 - 113474 - 4S - 1 - 90	4	35		9.00	14.35	5.80	11.0	48.00
10 - 113474 - 4S - 25M	4	25		8.00	9.53	5.80	11.0	42.00
10 - 113474 - 1S	0	50/60	0	11.50	14.30	9.17	15.1	44.60
10 - 113474 - 1S / M	0			11.50	14.35	10.17	15.1	45.30
10 - 113474 - 1S - 107	0	50		10.70	14.35	9.17	15.1	44.60
10 - 113474 - 1S - 25	0	25		7.80	9.50	9.17	15.1	44.60
10 - 113474 - 1S - 35	0	35		9.00	14.35	9.17	15.1	44.60
10 - 113474 - 1S - 45	0	9	8	4.55	6.80	9.17	15.1	44.60
10 - 113474 - 1S - 50	0	10		5.00	7.00	9.17	15.1	44.60
10 - 113474 - 1S - 62	0	16		6.20	9.50	9.17	15.1	45.30
10 - 113474 - 1S - 72	0		4	7.15	9.50	9.17	15.1	45.30
10 - 113474 - 0S	4/0	107	4/0	16.50	20.00	12.70	20.0	65.90

Consultare il nostro servizio vendite per altri tipi di contatti o per le attrezzature di crimpatura.

Please consult our sales department for other contacts or crimp tooling details.