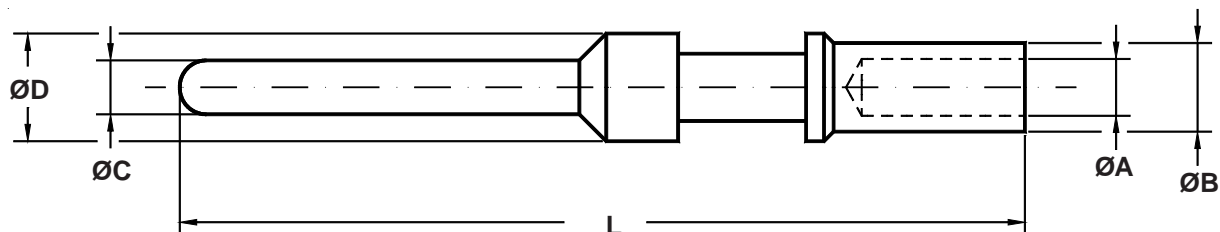


Codice Commital	Taglia	Sezione	AWG	A	B	C	D	L
<i>Commital P/N</i>	<i>Size</i>	<i>mm²</i>		<i>+0.1</i>	<i>±0.1</i>	<i>±0.05</i>	<i>±0.1</i>	<i>±0.1</i>
				<i>-0</i>				
10 - 375 - 20	20	0,5	24/20	1.30	1.93	1.00	2.0	24.30
10 - 40579	18	0.15/0.6	26/20	1.30	1.93	1.40	2.2	29.60
10 - 40553	16S	1/1.5	18/16	1.70	2.60	1.58	3.2	26.65
10 - 40553 - 13	16S	0.15/0.6	26/20	1.30	1.93	1.58	3.2	26.65
10 - 40553 - 15	16S	1	18	1.50	2.60	1.58	3.2	26.65
10 - 40553 - 20	16S	2	14	2.00	2.90	1.58	3.2	26.65
10 - 40553 - 26	16S	3	12	2.50	3.80	1.58	3.2	26.65
10 - 40557	16	1/1.5	18/16	1.70	2.60	1.58	3.2	31.75
10 - 40557 - 08	16	0.15/0.2	26/24	0.85	1.55	1.58	3.2	31.75
10 - 40557 - 12	16	0.6	20	1.20	2.60	1.58	3.2	31.75
10 - 40557 - 13	16	0.15/0.6	26/20	1.30	1.93	1.58	3.2	31.75
10 - 40557 - 15	16	1	18	1.50	2.60	1.58	3.2	31.75
10 - 40557 - 20	16	2	14	2.00	2.90	1.58	3.2	31.75
10 - 40557 - 26	16	3	12	2.50	3.80	1.58	3.2	31.75
10 - 40557 - 32	16		32/28	0.45	1.95	1.58	3.2	31.75
10 - 40561	12	3	12	2.50	3.90	2.38	4.8	37.65
10 - 40561 - 12	12	0.6	20	1.20	2.60	2.38	4.8	37.65
10 - 40561 - 15	12	1	18	1.50	3.40	2.38	4.8	37.65
10 - 40561 - 20	12	1/2	18/14	2.00	3.80	2.38	4.8	37.65
10 - 40561 - 22	12	2.5		2.20	3.80	2.38	4.8	37.65
10 - 40561 - 30	12	4		3.00	4.80	2.38	4.8	37.65
10 - 40561 - 30M	12	4		3.30	4.20	2.38	4.8	37.65
10 - 40561 - 38	12	6		3.60	4.80	2.38	4.8	37.65

Consultare il nostro servizio vendite per altri tipi di contatti o per le attrezzature di crimpatura .

Please consult our sales department for other contacts or crimp tooling details.

Contatti maschio a pinzare
Pin crimp contacts



Codice Commital	Taglia	Sezione	AWG	A	B	C	D	L
<i>Commital P/N</i>	<i>Size</i>	<i>mm²</i>		<i>+0.1</i>	<i>±0.1</i>	<i>±0.05</i>	<i>±0.1</i>	<i>±0.1</i>
				<i>-0</i>				
10 - 40792	8	6 / 8	8	4.50	6.90	3.59	7.8	42.00
10 - 40792 - 15	8	1	18	1.50	3.40	3.60	7.8	40.70
10 - 40792 - 18	8	1 / 2	18 / 14	1.80	3.80	3.60	7.8	40.70
10 - 40792 - 26	8	3	12	2.50	3.80	3.60	7.8	40.70
10 - 40792 - 30	8	4		3.00	4.80	3.60	7.8	40.70
10 - 40792 - 38	8	6		3.60	6.80	3.60	7.8	40.70
10 - 40792 - 50	8	10		5.00	6.90	3.59	7.8	42.00
10 - 40792 - 58	8	13.2	6	5.80	7.80	3.60	7.8	40.70
10 - 113474 - 4P	4	22	4	7.15	9.53	5.70	11.0	42.00
10 - 113474 - 4P - 22	4	2.5		2.20	3.80	5.70	11.0	42.00
10 - 113474 - 4P - 25	4	25		7.80	9.50	5.70	11.0	42.00
10 - 113474 - 4P - 26	4	3		2.50	3.80	5.70	11.0	42.00
10 - 113474 - 4P - 30	4	4		3.00	4.80	5.70	11.0	42.00
10 - 113474 - 4P - 35	4	35		9.00	14.35	5.70	11.0	42.00
10 - 113474 - 4P - 50	4	10		5.00	7.00	5.70	11.0	42.00
10 - 113474 - 4P - 62	4	16		6.20	9.53	5.70	11.0	42.00
10 - 113474 - 1P	0	50 / 60	0	11.50	14.30	9.05	15.1	45.00
10 - 113474 - 1P - 107	0	50		10.70	14.35	9.05	15.1	45.00
10 - 113474 - 1P - 25	0	25		7.80	9.50	9.05	15.1	45.00
10 - 113474 - 1P - 35	0	35		9.00	14.35	9.05	15.1	45.00
10 - 113474 - 1P - 45	0	9	8	4.55	6.80	9.05	15.1	45.00
10 - 113474 - 1P - 50	0	10		5.00	7.00	9.05	15.1	45.00
10 - 113474 - 1P - 62	0	16		6.20	9.50	9.05	15.1	45.00
10 - 113474 - 1P - 72	0		4	7.15	9.50	9.05	15.1	45.00
10 - 113474 - 0P	4/0	107	4/0	16.50	20.00	12.69	20.0	63.00

Consultare il nostro servizio vendite per altri tipi di contatti o per le attrezzature di crimpatura .

Please consult our sales department for other contacts or crimp tooling details.