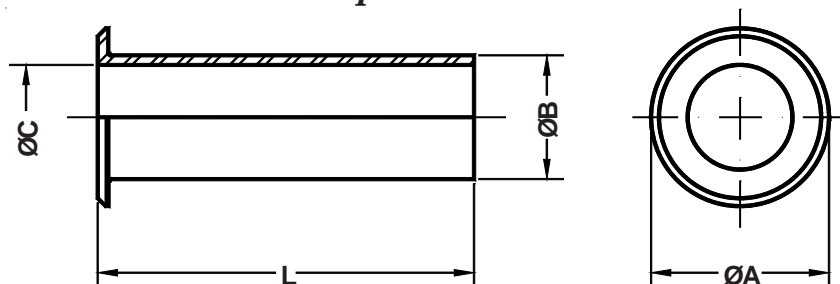
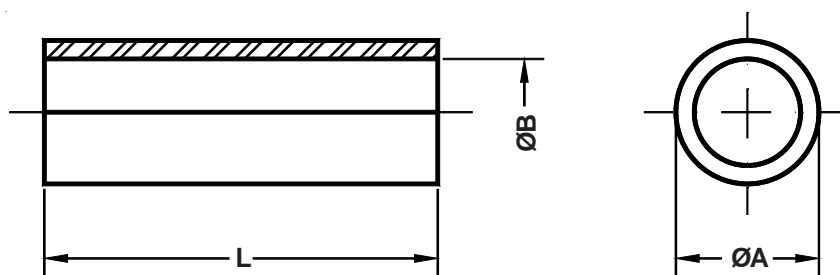


Bussola in neoprene

Neoprene sleeve



Codice Commital Commital P/N	A ±0.1	B ±0.1	C ±0.1	L ±0.1
IT 3420 - 4	12.8	7.67	5.58	69.8
IT 3420 - 6	15.7	10.84	7.92	66.8
IT 3420 - 8	18.8	14.02	11.09	63.5
IT 3420 - 10	22.0	15.62	14.27	60.3
IT 3420 - 12	27.0	18.79	15.87	57.1
IT 3420 - 16	33.3	23.54	19.05	53.9
IT 3420 - 20	40.5	31.49	23.79	50.8
IT 3420 - 24	46.9	34.67	31.75	47.6
IT 3420 - 28	52.9	40.99	34.92	44.4



Codice Commital Commital P/N	A ±0.1	B ±0.1	L ±0.1
IT 3420 - 4A	7.63	5.56	50.5
IT 3420 - 6A	10.50	7.93	50.5
IT 3420 - 8A	13.50	11.10	50.5
IT 3420 - 10A	15.70	11.10	50.5
IT 3420 - 12A	18.50	13.74	50.9
IT 3420 - 16A	23.60	19.00	50.9
IT 3420 - 20A	31.10	23.80	50.2
IT 3420 - 24A	33.90	28.50	51.1
IT 3420 - 28A	40.60	31.80	50.2
IT 3420 - 29A	45.00	41.00	50.5

IT3420-XX : Bussola di protezione e riduzione da usarsi con morsetto serracavo in classe A.

IT3420-XX : Neoprene sleeve for protection and reduction, used with class A cable clamps.

IT3420-XXA : Bussola di protezione e riduzione da usarsi con morsetto serracavo in classe C.

IT3420-XXA : Neoprene sleeve for protection and reduction, used with class C cable clamps.