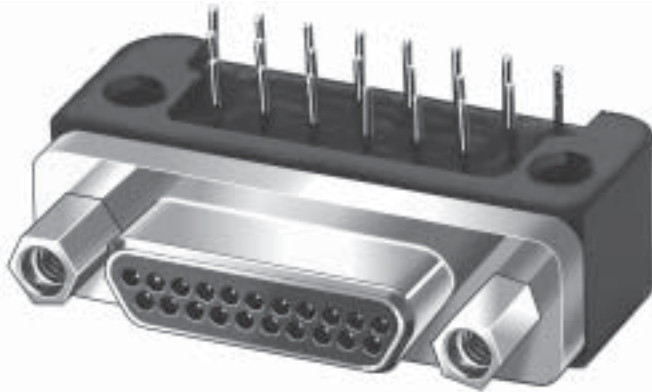


MIL-DTL-83513 - Narrow Profile, Right Angle (90°), Printed Circuit Boards Slash / 10 through 15



Pin Connector Shown

M83513 narrow profile right angle printed circuit board connectors are the most popular type of board mount connector. Available in metal shell only, these connectors are potted with epoxy and are environmentally sealed.

Contact terminals are spaced on .100 inch by .100 inch centers for easy board mounting.

RELATED INFORMATION

Performance Specifications	IBC*
Materials and Finishes	IBC*
Dimensions	B-15
PCB Mounting Layouts	Z-6,7

* Available on the Inside Back
Cover Fold-Out

HOW TO ORDER

Prefix	Slash Number - Insert Arrangement	Printed Circuit Tail Length	Shell Material/Finish	Jackpost Option
M83513/	10-A - Pin Connector, 9 contacts 10-B - Pin Connector, 15 contacts 10-C - Pin Connector, 21 contacts 10-D - Pin Connector, 25 contacts 10-E - Pin Connector, 31 contacts 10-F - Pin Connector, 37 contacts 11-G - Pin Connector, 51 contacts 12-H - Pin Connector, 100 contacts 13-A - Socket Connector, 9 contacts 13-B - Socket Connector, 15 contacts 13-C - Socket Connector, 21 contacts 13-D - Socket Connector, 25 contacts 13-E - Socket Connector, 31 contacts 13-F - Socket Connector, 37 contacts 14-G - Socket Connector, 51 contacts 15-H - Socket Connector, 100 contacts	01 - .109 inches 02 - .140 inches 03 - .172 inches	C - Aluminum, Cadmium Plating N - Aluminum, Electroless Nickel P - Stainless Steel, Passivated	N - No jackposts or threaded insert P - Jackpost attached T - Threaded insert W - Jackpost and threaded insert
Sample Part Number:				
M83513/	10-C	01	N	P