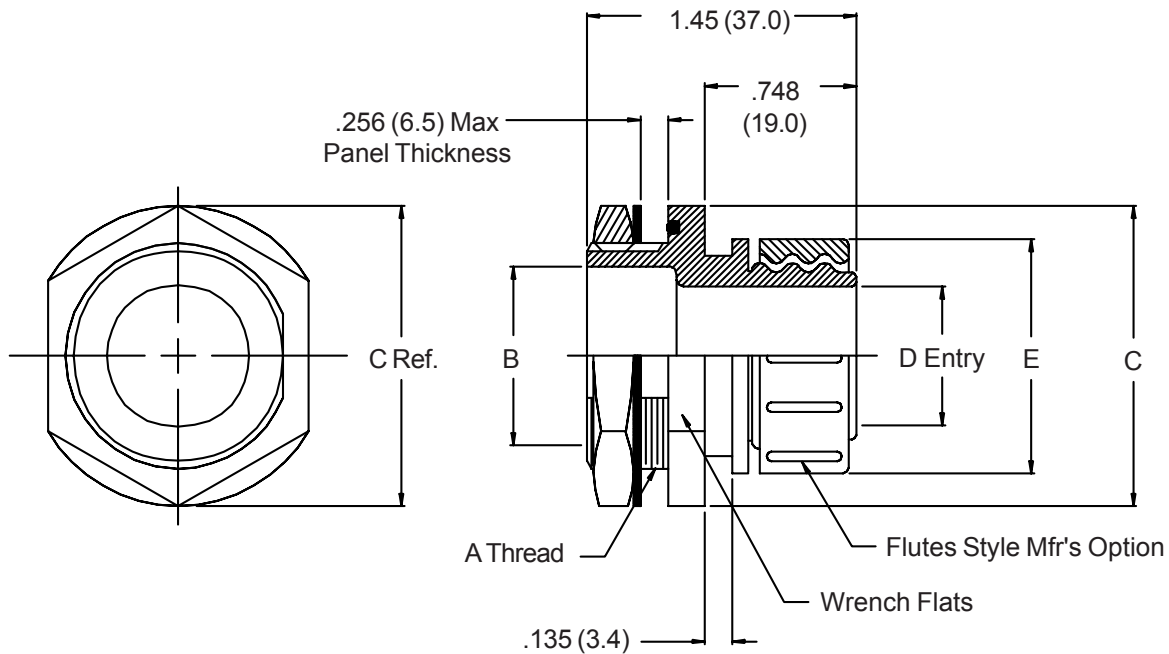
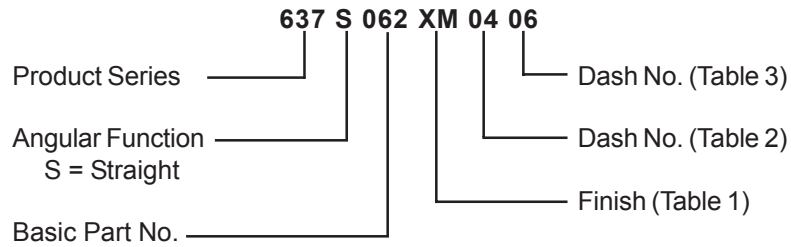


# 637-062 Composite Shrink-Boot Feed-Through Adapter Jam-Nut Mount Environmental



**TABLE I**

XM	Electroless Nickel
XW	Cadmium Olive Drab Over Electroless Nickel

**TABLE II**

Dash No.	A Thread ISO Metric	B Dia. Min.	C Max.	Max Entry Table 3
01	M 16 x 1.5-6g	.394 (10.0)	1.024 (26.0)	03
02	M 20 x 1.5-6g	.551 (14.0)	1.181 (30.0)	04
03	M 27 x 2.0-6g	.866 (22.0)	1.496 (38.0)	07
04	M 36 x 2.0-6g	1.181 (30.0)	1.850 (47.0)	08

**TABLE III**

Dash No.	D		E Max.
	+03 -.00	(.8) (.0)	
01	.125 (3.2)	.531 (13.5)	
02	.250 (6.4)	.656 (16.7)	
03	.375 (9.5)	.781 (19.8)	
04	.500 (12.7)	.906 (23.0)	
05	.625 (15.9)	1.031 (26.2)	
06	.750 (19.1)	1.156 (29.4)	
07	.875 (22.2)	1.281 (32.5)	
08	1.000 (25.4)	1.406 (35.7)	

1. Metric dimensions (mm) are indicated in parentheses.
2. Consult factory for shrink boot to be supplied with product.