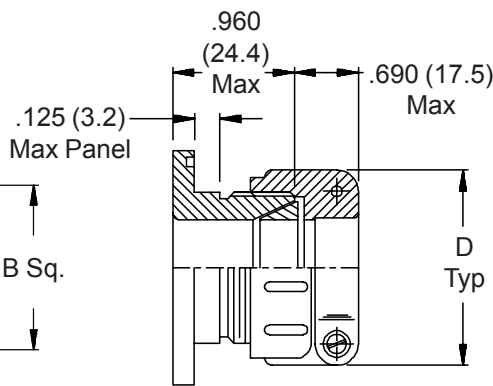
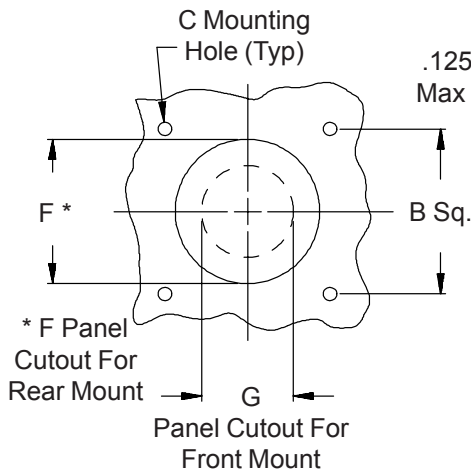
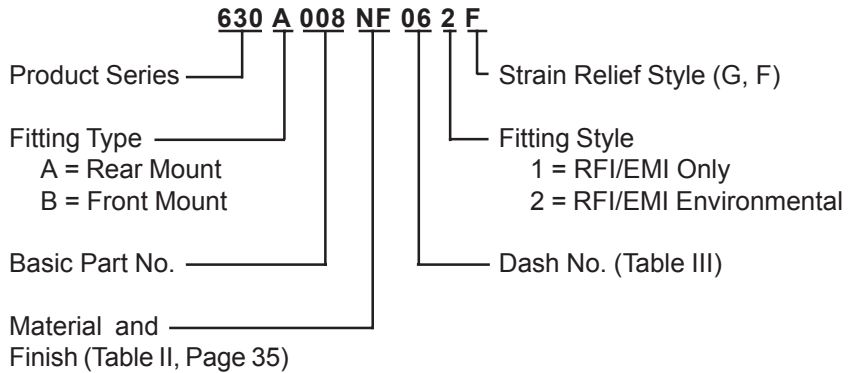
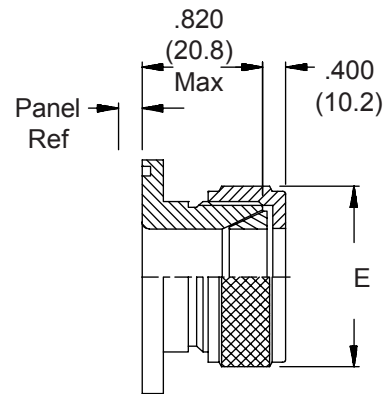


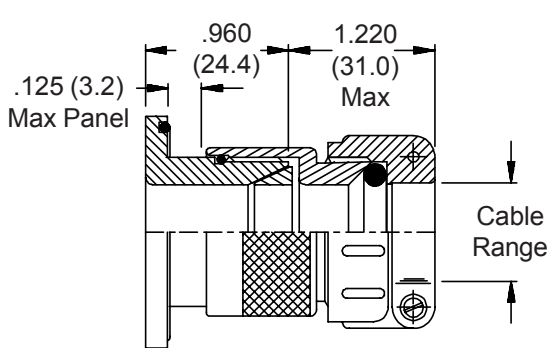
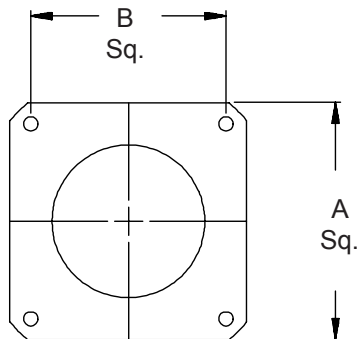
For Strain Relief
Styles G and F



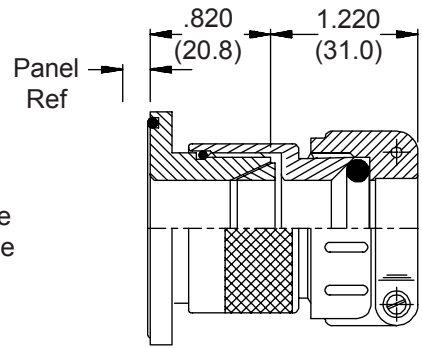
Style 1
Rear Mount Type A
RFI/EMI
(Shown With Style F
Strain Relief)



Style 1
Front Mount Type B
RFI/EMI
(Shown With Style G
Gland Nut)



Style 2
Rear Mount Type A
RFI/EMI Environmental
(Shown With Style F
Strain Relief)



Style 2
Front Mount Type A
RFI/EMI Environmental
(Shown With Style F
Strain Relief)

630-008
Square-Flange Feed-Through Fittings
RFI/EMI Environmental



TABLE III						
Dash No.	Cable Range		A Max	B Dim	C	
	Min	Max			+0.015 (-0)	+0.4 (-0.0)
01	.125 (3.2)	.250 (6.4)	.885 (22.5)	.593 (15.1)	.120 (3.0)	(3.0)
02	.156 (4.0)	.375 (9.5)	1.104 (28.0)	.812 (20.6)	.120 (3.0)	(3.0)
03	.250 (6.4)	.438 (11.1)	1.197 (30.4)	.906 (23.0)	.120 (3.0)	(3.0)
04	.280 (7.1)	.500 (12.7)	1.291 (32.8)	.968 (24.6)	.120 (3.0)	(3.0)
05	.375 (9.5)	.625 (15.9)	1.385 (35.2)	1.062 (27.0)	.120 (3.0)	(3.0)
06	.500 (12.7)	.750 (19.1)	1.635 (41.5)	1.250 (31.8)	.120 (3.0)	(3.0)
07	.625 (15.9)	.875 (22.2)	1.760 (44.7)	1.375 (34.9)	.147 (3.7)	(3.7)
08	.750 (19.1)	1.000 (25.4)	2.010 (51.1)	1.562 (39.7)	.147 (3.7)	(3.7)
09	.875 (22.2)	1.125 (28.6)	2.260 (57.4)	1.750 (44.5)	.173 (4.4)	(4.4)
10	1.000 (25.4)	1.250 (31.8)	2.510 (63.8)	1.938 (49.2)	.173 (4.4)	(4.4)

TABLE III (Continued)								
Dash No.	D		E		F		G	
	Max		Max		+0.015 (-0)	+0.4 (-0.0)	+0.031 (-0)	+0.8 (-0.0)
01	.843 (21.4)		.625 (15.9)		.515 (13.1)	(13.1)	.250 (6.4)	(6.4)
02	.968 (24.6)		.750 (19.1)		.640 (16.3)	(16.3)	.375 (9.5)	(9.5)
03	1.046 (26.6)		.875 (22.2)		.765 (19.4)	(19.4)	.438 (11.1)	(11.1)
04	1.156 (29.4)		1.000 (25.4)		.890 (22.6)	(22.6)	.500 (12.7)	(12.7)
05	1.218 (30.9)		1.125 (28.6)		1.015 (25.8)	(25.8)	.625 (15.9)	(15.9)
06	1.343 (34.1)		1.250 (31.8)		1.140 (29.0)	(29.0)	.750 (19.1)	(19.1)
07	1.468 (37.3)		1.375 (34.9)		1.265 (32.1)	(32.1)	.875 (22.2)	(22.2)
08	1.593 (40.5)		1.500 (38.1)		1.390 (35.3)	(35.3)	1.000 (25.4)	(25.4)
09	1.718 (43.6)		1.625 (41.3)		1.515 (38.5)	(38.5)	1.125 (28.6)	(28.6)
10	1.843 (46.8)		1.750 (44.5)		1.640 (41.7)	(41.7)	1.250 (31.8)	(31.8)

1. Metric dimensions (mm) are indicated in parentheses.
2. Cable range is defined as the accommodations range for the wire bundle or cable. Dimensions shown are not intended for inspection criteria.