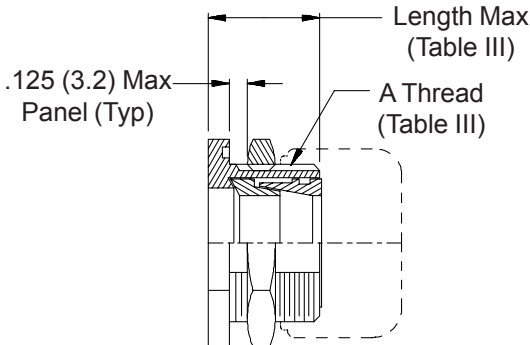
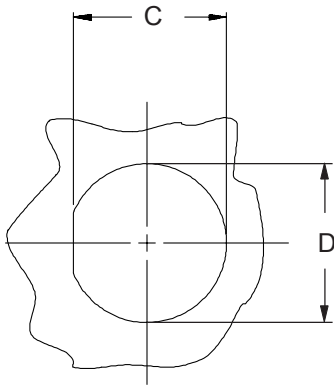
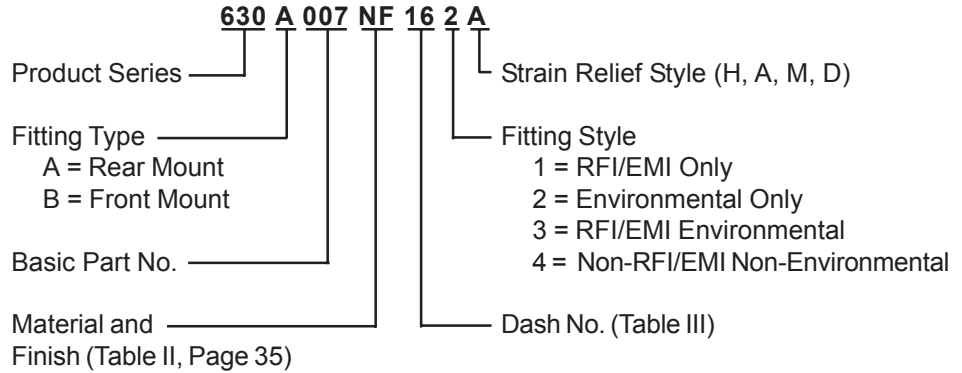
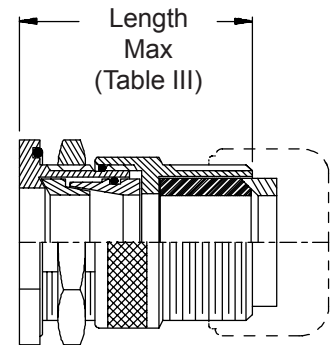


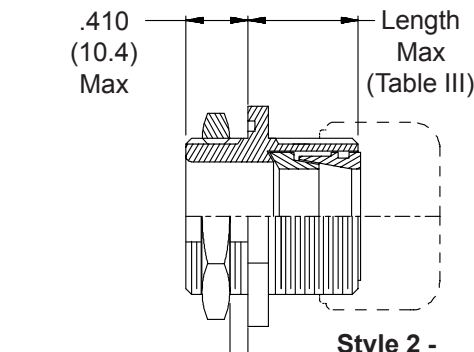
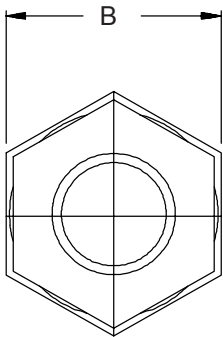
1. Metric dimensions (mm) are indicated in parentheses.
2. Cable range is defined as the accommodations range for the wire bundle or cable. Dimensions shown are not intended for inspection criteria.



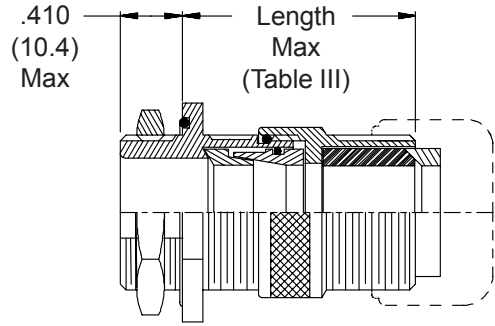
**Style 1 - RFI/EMI
Type A - Rear Mount**



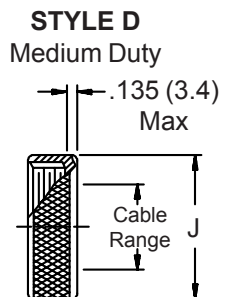
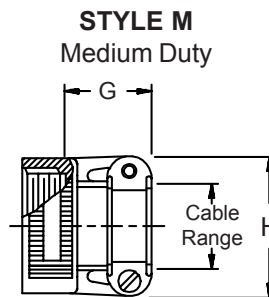
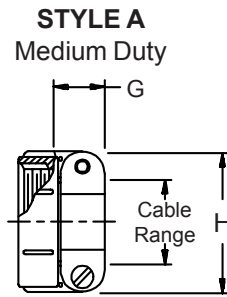
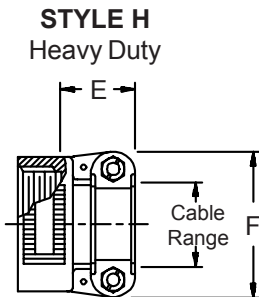
**Style 3 - RFI/EMI Environmental
Type A - Rear Mount**



**Style 2 - RFI/EMI
Type B - Front Mount**



**Style 3 - RFI/EMI Environmental
Type B - Front Mount**



630-007
Jam Nut Feed-Through Fittings
RFI/EMI Environmental



Feed-Through Fittings

TABLE III

| Dash No. | Clamp Style | Clamp Size | Cable Range | | A Thread Unified | B Dim | C Flat | | D Dia | |
|----------|-------------|------------|--------------|--------------|------------------|--------------|--------------|--------------|--------|--------|
| | | | Min | Max | | | ± .010 | (± .3) | ± .010 | (± .3) |
| 01 | 1, 2 | 03 | .157 (4.0) | .250 (6.4) | 1/2 -28 | .688 (17.5) | .479 (12.2) | .515 (13.1) | | |
| 02 | 3 | 03 | .157 (4.0) | .250 (6.4) | 1/2 -28 | .688 (17.5) | .479 (12.2) | .515 (13.1) | | |
| 03 | 1, 2 | 04 | .187 (4.7) | .312 (7.9) | 5/8 -24 | .813 (20.7) | .595 (15.1) | .640 (16.3) | | |
| 04 | 3 | 04 | .187 (4.7) | .312 (7.9) | 5/8 -24 | .813 (20.7) | .595 (15.1) | .640 (16.3) | | |
| 05 | 1, 2 | 06 | .281 (7.1) | .437 (11.1) | 3/4 -20 | .938 (23.8) | .720 (18.3) | .765 (19.4) | | |
| 06 | 3 | 06 | .281 (7.1) | .437 (11.1) | 3/4 -20 | .938 (23.8) | .720 (18.3) | .765 (19.4) | | |
| 07 | 1, 2 | 08 | .344 (8.7) | .562 (14.3) | 7/8 -20 | 1.063 (27.0) | .845 (21.5) | .890 (22.6) | | |
| 08 | 3 | 08 | .387 (9.8) | .562 (14.3) | 7/8 -20 | 1.063 (27.0) | .845 (21.5) | .890 (22.6) | | |
| 09 | 1, 2 | 10 | .375 (9.5) | .625 (15.9) | 1 -20 | 1.250 (31.8) | .970 (24.6) | 1.015 (25.8) | | |
| 10 | 3 | 10 | .512 (13.0) | .625 (15.9) | 1 -20 | 1.250 (31.8) | .970 (24.6) | 1.015 (25.8) | | |
| 11 | 1, 2 | 12 | .438 (11.1) | .750 (19.1) | 1 3/16 -18 | 1.375 (34.9) | 1.158 (29.4) | 1.202 (30.5) | | |
| 12 | 3 | 12 | .575 (14.6) | .750 (19.1) | 1 3/16 -18 | 1.375 (34.9) | 1.158 (29.4) | 1.202 (30.5) | | |
| 13 | 1, 2 | 16 | .625 (15.9) | .937 (23.8) | 1 7/16 -18 | 1.625 (41.3) | 1.408 (35.8) | 1.452 (36.9) | | |
| 14 | 3 | 16 | .625 (15.9) | .937 (23.8) | 1 7/16 -18 | 1.625 (41.3) | 1.408 (35.8) | 1.452 (36.9) | | |
| 15 | 1, 2 | 20 | .875 (22.2) | 1.250 (31.8) | 1 3/4 -18 | 2.000 (50.8) | 1.720 (43.7) | 1.765 (44.8) | | |
| 16 | 3 | 20 | .875 (22.2) | 1.250 (31.8) | 1 3/4 -18 | 2.000 (50.8) | 1.720 (43.7) | 1.765 (44.8) | | |
| 17 | 1, 2 | 24 | 1.000 (25.4) | 1.375 (34.9) | 2 -18 | 2.188 (55.6) | 1.970 (50.0) | 2.015 (51.2) | | |
| 18 | 3 | 24 | 1.000 (25.4) | 1.375 (34.9) | 2 -18 | 2.188 (55.6) | 1.970 (50.0) | 2.015 (51.2) | | |
| 19 | 1, 2 | 28 | 1.250 (31.8) | 1.625 (41.3) | 2 1/4 -16 | 2.438 (61.9) | 2.220 (56.4) | 2.265 (57.5) | | |
| 20 | 3 | 28 | 1.250 (31.8) | 1.625 (41.3) | 2 1/4 -16 | 2.438 (61.9) | 2.220 (56.4) | 2.265 (57.5) | | |
| 21 | 1, 2 | 32 | 1.437 (36.5) | 1.875 (47.6) | 2 1/2 -16 | 2.813 (71.5) | 2.470 (62.7) | 2.515 (63.9) | | |
| 22 | 3 | 32 | 1.437 (36.5) | 1.875 (47.6) | 2 1/2 -16 | 2.813 (71.5) | 2.470 (62.7) | 2.515 (63.9) | | |
| 23 | 1, 2 | 40 | 1.875 (47.6) | 2.375 (60.3) | 3 -16 | 3.375 (85.7) | 2.970 (75.4) | 3.015 (76.6) | | |
| 24 | 3 | 40 | 1.875 (47.6) | 2.375 (60.3) | 3 -16 | 3.375 (85.7) | 2.970 (75.4) | 3.015 (76.6) | | |

TABLE III (Continued)

| Dash No. | Style | E Max | F Max | G Max | H Max | J Max | Length Max |
|----------|-------|--------------|--------------|--------------|--------------|--------------|--------------|
| 01 | 1, 2 | --- | --- | .760 (19.3) | .843 (21.4) | .630 (16.0) | 1.281 (32.5) |
| 02 | 3 | --- | --- | .760 (19.3) | .843 (21.4) | .630 (16.0) | 1.969 (50.0) |
| 03 | 1, 2 | .780 (19.8) | .957 (24.3) | .760 (19.3) | .906 (23.0) | .755 (19.2) | 1.281 (32.5) |
| 04 | 3 | .780 (19.8) | .957 (24.3) | .760 (19.3) | .906 (23.0) | .755 (19.2) | 1.969 (50.0) |
| 05 | 1, 2 | .780 (19.8) | 1.145 (29.1) | .760 (19.3) | 1.093 (27.8) | .942 (23.9) | 1.281 (32.5) |
| 06 | 3 | .780 (19.8) | 1.145 (29.1) | .760 (19.3) | 1.093 (27.8) | .942 (23.9) | 1.969 (50.0) |
| 07 | 1, 2 | .780 (19.8) | 1.332 (33.8) | .760 (19.3) | 1.187 (30.1) | 1.067 (27.1) | 1.281 (32.5) |
| 08 | 3 | .780 (19.8) | 1.332 (33.8) | .760 (19.3) | 1.187 (30.1) | 1.067 (27.1) | 1.969 (50.0) |
| 09 | 1, 2 | .780 (19.8) | 1.332 (33.8) | .760 (19.3) | 1.281 (32.5) | 1.192 (30.3) | 1.281 (32.5) |
| 10 | 3 | .780 (19.8) | 1.332 (33.8) | .760 (19.3) | 1.281 (32.5) | 1.192 (30.3) | 1.969 (50.0) |
| 11 | 1, 2 | .811 (20.6) | 1.551 (39.4) | .760 (19.3) | 1.500 (38.1) | 1.380 (35.1) | 1.344 (34.1) |
| 12 | 3 | .811 (20.6) | 1.551 (39.4) | .760 (19.3) | 1.500 (38.1) | 1.380 (35.1) | 1.969 (50.0) |
| 13 | 1, 2 | .905 (23.0) | 1.770 (45.0) | 1.073 (27.3) | 1.719 (43.7) | 1.535 (39.0) | 1.344 (34.1) |
| 14 | 3 | .905 (23.0) | 1.770 (45.0) | 1.073 (27.3) | 1.719 (43.7) | 1.535 (39.0) | 1.969 (50.0) |
| 15 | 1, 2 | 1.062 (27.0) | 2.113 (53.7) | 1.323 (33.6) | 2.062 (52.4) | 1.848 (46.9) | 1.344 (34.1) |
| 16 | 3 | 1.092 (27.7) | 2.113 (53.7) | 1.323 (33.6) | 2.062 (52.4) | 1.848 (46.9) | 2.062 (52.4) |
| 17 | 1, 2 | 1.124 (28.5) | 2.363 (60.0) | 1.323 (33.6) | 2.312 (58.7) | 2.255 (57.3) | 1.406 (35.7) |
| 18 | 3 | 1.124 (28.5) | 2.363 (60.0) | 1.323 (33.6) | 2.312 (58.7) | 2.255 (57.3) | 2.062 (52.4) |
| 19 | 1, 2 | 1.399 (35.5) | 2.770 (70.4) | 1.572 (39.9) | 2.719 (69.1) | 2.505 (63.6) | 1.406 (35.7) |
| 20 | 3 | 1.399 (35.5) | 2.770 (70.4) | 1.572 (39.9) | 2.719 (69.1) | 2.505 (63.6) | 2.062 (52.4) |
| 21 | 1, 2 | 1.399 (35.5) | 3.020 (76.7) | 1.572 (39.9) | 2.969 (75.4) | 2.755 (70.0) | 1.406 (35.7) |
| 22 | 3 | 1.399 (35.5) | 3.020 (76.7) | 1.572 (39.9) | 2.969 (75.4) | 2.755 (70.0) | 2.375 (60.3) |
| 23 | 1, 2 | --- | --- | 1.572 (39.9) | 3.531 (89.7) | 3.255 (82.7) | 1.531 (38.9) |
| 24 | 3 | --- | --- | 1.572 (39.9) | 3.531 (89.7) | 3.255 (82.7) | 2.375 (60.3) |