

## M24758/9 Adapter for MIL-DTL-5015 Series 3100 Connectors

### M24758/9-16-06-01-A

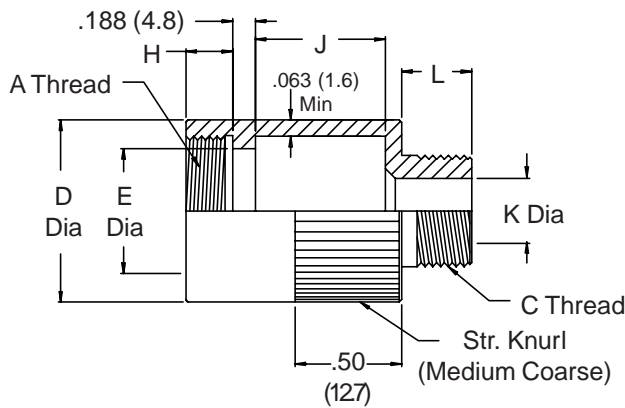
Basic Part No. \_\_\_\_\_

Conduit Size Code (See Table I) \_\_\_\_\_

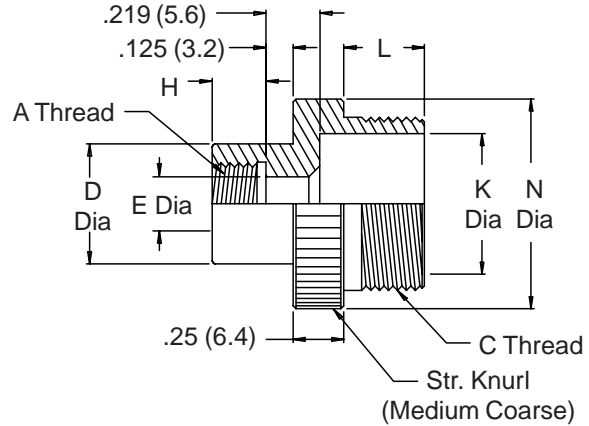
A-Thread Code (See Table II) \_\_\_\_\_

Material Designator:  
 A = Aluminum  
 B = Brass  
 C = CRES 316

Style Designator \_\_\_\_\_



**STYLE 01**  
 FOR USE WHEN E DIAMETER IS GREATER THAN K DIAMETER



**STYLE 02**  
 SAME AS STYLE 01 EXCEPT J DIMENSION IS ZERO

**STYLE 03**  
 FOR USE WHEN E DIAMETER IS EQUAL TO OR LESS THAN K DIAMETER

**TABLE I**

Conduit Size Code	C Thread (Class 2A)	L		K Dia		N Dia	
		±.02	(.5)	Min.	±.02	(.5)	(.5)
02	0.438 - 28 UNEF	.210	(5.3)	.250	(6.4)	.687	(17.4)
03	0.563 - 24 UNEF	.250	(6.4)	.370	(9.4)	.812	(20.6)
04	0.688 - 24 UNEF	.250	(6.4)	.500	(12.7)	.937	(23.8)
05	0.813 - 20 UNEF	.310	(7.9)	.620	(15.7)	1.062	(27.0)
06	0.938 - 20 UNEF	.310	(7.9)	.750	(19.1)	1.187	(30.1)
08	1.250 - 18 UNEF	.370	(9.4)	1.000	(25.4)	1.500	(38.1)
10	1.563 - 18 UNEF	.370	(9.4)	1.250	(31.8)	1.812	(46.0)
12	1.875 - 16 UN	.430	(10.9)	1.500	(38.1)	2.125	(54.0)
16	2.375 - 16 UN	.430	(10.9)	2.000	(50.8)	2.625	(66.7)
20	2.875 - 16 UN	.430	(10.9)	2.500	(63.5)	3.125	(79.4)
24	3.375 - 16 UN	.430	(10.9)	3.000	(76.2)	3.625	(92.1)

1. The M24758/9 adapter couples MIL-DTL-5015 connectors (MS3100, MS3101, MS3106, and MS-series backshells) to M24758/2, M24758/3 or M24758/4 fittings.
2. For MIL-DTL-5015, MS3400 Series, the M24758/13 adapter may be used.
2. Metric dimensions (mm) are indicated in parentheses.
3. For complete dimensions see applicable Military Specification.

## M24758/9 Adapter for MIL-DTL-5015 Series 3100 Connectors



**TABLE II (MIL-C-5015 Connector Codes)**

Connector Code	Class	Manufacturer	Series
A		All Manufacturers	MS-Series Backshell
B	A	Amphenol	MS3100, MS3101, MS3106, 97-3100, 97-3101, 97-3106
C	E & R	Amphenol	MS3100, MS3101, MS3106, 69-3100, 69-3101, 69-3106
D	A, E & R	Bendix	MS3100, MS3101, MS3106, 10-214, 10-720, 10-721, 10-726
E	A	Cannon	MS3100, MS3101, MS3106, CA-3101, CA-3106
F	E & R	Cannon	MS3100, MS3101, MS3106,

**TABLE III (A Thread Code and Adapter Dimensions)**

A Thread Code	Conn. Shell Size	Conn. Code (Table II)	A Thread (Class 2B)		D Dia		E Dia		J Style 01*	
			±.02	(.5)	±.02	(.5)	±.02	(.5)	±.03	(.8)
01	8S	D	0.375 - 32 UNEF	.180 (4.6)	.500 (12.7)	.280 (7.1)	.500 (12.7)			
02	8S	B	0.438 - 27 UNS	.210 (5.3)	.560 (14.2)	.340 (8.6)	.530 (13.5)			
03	8	C, E, F	0.438 - 28 UNEF	.210 (5.3)	.560 (14.2)	.340 (8.6)	.530 (13.5)			
04	8S	A	0.500 - 28 UNEF	.210 (5.3)	.620 (15.7)	.370 (9.4)	.560 (14.2)			
04	10S	A, B, C, D, E	0.500 - 28 UNEF	.210 (5.3)	.620 (15.7)	.370 (9.4)	.560 (14.2)			
05	10S	E	0.563 - 24 UNEF	.250 (6.4)	.680 (17.3)	.450 (11.4)	.590 (15.0)			
05	10SL	E, F	0.563 - 24 UNEF	.250 (6.4)	.680 (17.3)	.450 (11.4)	.590 (15.0)			
06	10SL	A, B, C, D	0.625 - 24 UNEF	.250 (6.4)	.750 (19.1)	.500 (12.7)	.620 (15.7)			
06	12, 12S	A, D, F	0.625 - 24 UNEF	.250 (6.4)	.750 (19.1)	.500 (12.7)	.620 (15.7)			
07	12, 12S	B, C, E	0.688 - 24 UNEF	.250 (6.4)	.810 (20.6)	.570 (14.5)	.650 (16.5)			
08	12SL	A	0.750 - 20 UNEF	.280 (7.1)	.870 (22.1)	.620 (15.7)	.680 (17.3)			
08	14, 14S	A, B, C, D, E, F	0.750 - 20 UNEF	.280 (7.1)	.870 (22.1)	.620 (15.7)	.680 (17.3)			
09	16, 16S	A, B, C, D, E, F	0.875 - 20 UNEF	.280 (7.1)	1.000 (25.4)	.750 (19.1)	.710 (18.0)			
10	18	A, B, C, D, E, F	1.000 - 20 UNEF	.280 (7.1)	1.120 (28.4)	.870 (22.1)	.750 (19.1)			
11	20	B, D, E, F	1.125 - 18 UNEF	.280 (7.1)	1.250 (31.8)	1.000 (25.4)	.780 (19.8)			
12	20	C	1.125 - 24 UNS	.280 (7.1)	1.250 (31.8)	1.000 (25.4)	.780 (19.8)			
13	20, 22	A	1.188 - 18 UNEF	.280 (7.1)	1.310 (33.3)	1.060 (26.9)	.810 (20.6)			
14	22	B, C, D, E, F	1.250 - 18 UNEF	.280 (7.1)	1.370 (34.8)	1.120 (28.4)	.870 (22.1)			
15	24	B, C, D, E, F	1.375 - 18 UNEF	.280 (7.1)	1.500 (38.1)	1.250 (31.8)	1.000 (25.4)			
16	24, 28	A	1.438 - 18 UNEF	.280 (7.1)	1.560 (39.6)	1.310 (33.3)	1.060 (26.9)			
17	28	B, C, D, E, F	1.625 - 18 UNEF	.280 (7.1)	1.750 (44.5)	1.500 (38.1)	1.120 (28.4)			
18	32	A	1.750 - 18 UNS	.280 (7.1)	1.870 (47.5)	1.620 (41.1)	1.180 (30.0)			
19	32	D, E, F	1.875 - 16 UN	.280 (7.1)	2.000 (50.8)	1.750 (44.5)	1.250 (31.8)			
20	32	B, C	1.906 - 18	.280 (7.1)	2.030 (51.6)	1.780 (45.2)	1.280 (32.5)			
21	36	A	2.000 - 18 UNS	.280 (7.1)	2.120 (53.8)	1.870 (47.5)	1.340 (34.0)			
22	36	D	2.063 - 16 UNS	.310 (7.9)	2.180 (55.4)	1.930 (49.0)	1.370 (34.8)			
23	36	C	2.063 - 20	.280 (7.1)	2.180 (55.4)	1.930 (49.0)	1.370 (34.8)			
24	36	E, F	2.125 - 16 UN	.310 (7.9)	2.250 (57.2)	2.000 (50.8)	1.400 (35.6)			
25	36	B	2.125 - 18 UN	.280 (7.1)	2.250 (57.2)	2.000 (50.8)	1.400 (35.6)			
26	40	A	2.250 - 16 UN	.310 (7.9)	2.370 (60.2)	2.120 (53.8)	1.500 (38.1)			
27	40	D	2.313 - 16 UNS	.310 (7.9)	2.430 (61.7)	2.180 (55.4)	1.560 (39.6)			
28	40	B, E, F	2.375 - 16 UN	.310 (7.9)	2.500 (63.5)	2.250 (57.2)	1.620 (41.1)			
29	44	B, F	2.625 - 16 UN	.310 (7.9)	2.750 (69.9)	2.500 (63.5)	1.870 (47.5)			
30	48	F	2.813 - 18	.280 (7.1)	2.930 (74.4)	2.680 (68.1)	2.060 (52.3)			
31	48	B	2.875 - 16 UN	.310 (7.9)	3.000 (76.2)	2.750 (69.9)	2.120 (53.8)			

\* For Style 02, J Dimension is zero.