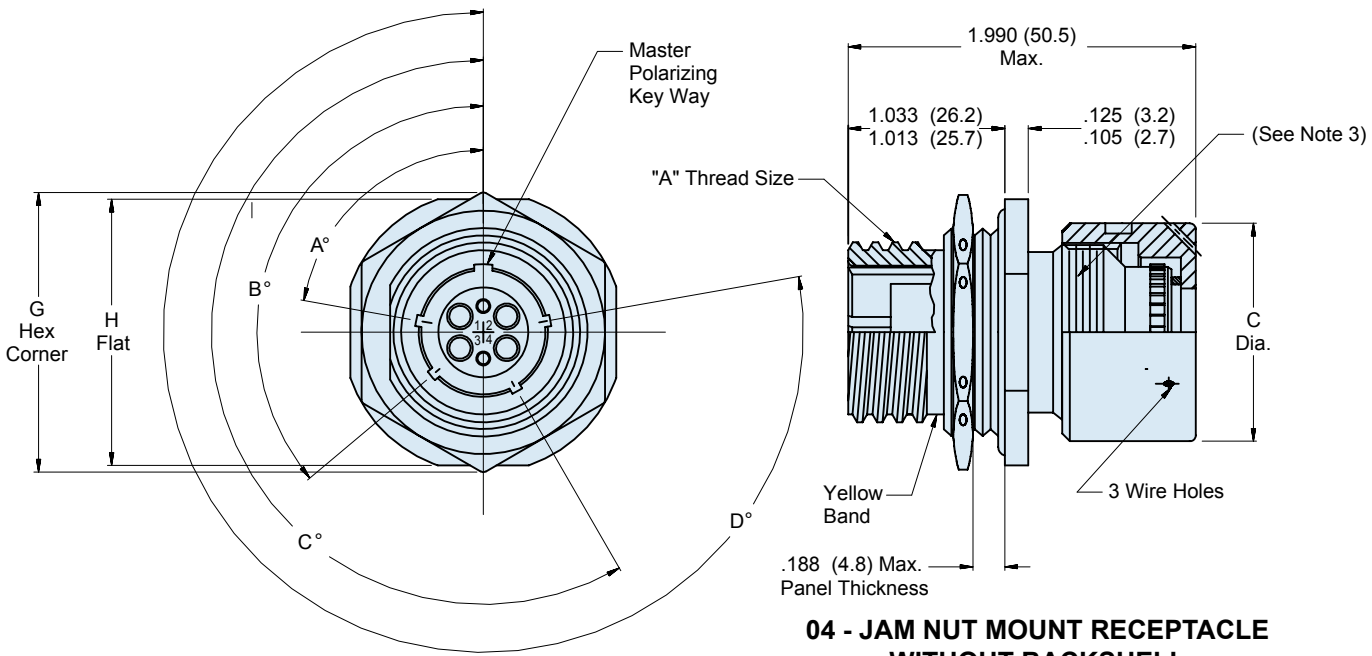
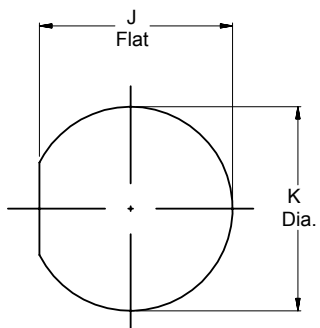




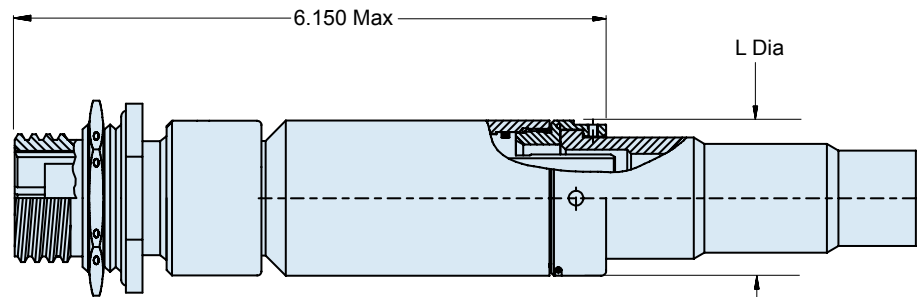
180-040 (-04, -14, -24, -34)
MIL-PRF-28876 Style Jam Nut Receptacle Connector
for use with MIL-PRF-29504/14 and /15 Termini



**04 - JAM NUT MOUNT RECEPTACLE
WITHOUT BACKSHELL**



**RECOMMENDED
PANEL CUTOUT**



**14 - JAM NUT MOUNT RECEPTACLE
WITH STRAIGHT BACKSHELL
(Consult Factory for 45° and 90° Backshell Versions)**

TABLE VI: SHELL SIZE							
Shell Size	G Max	H ± .010 (0.3)	J ± .005 (0.1)	K Dia ± .005 (0.1)	C Dia Max	L Dia Max	"A" Thread Size .1P-.2L-DS
11	1.290 (32.8)	1.262 (32.1)	.848 (21.5)	.885 (22.5)	.960 (24.4)	.960 (24.4)	.750 (19.05)
13	1.435 (35.9)	1.387 (35.2)	.937 (24.7)	1.010 (25.7)	1.085 (27.6)	1.085 (27.6)	.875 (22.2)
15	1.650 (41.9)	1.575 (40.0)	1.160 (29.5)	1.198 (30.4)	1.255 (31.9)	1.255 (31.9)	1.062 (26.9)
23	2.093 (53.2)	2.014 (51.2)	1.598 (40.6)	1.635 (41.5)	1.695 (43.1)	1.763 (44.8)	1.500 (38.1)