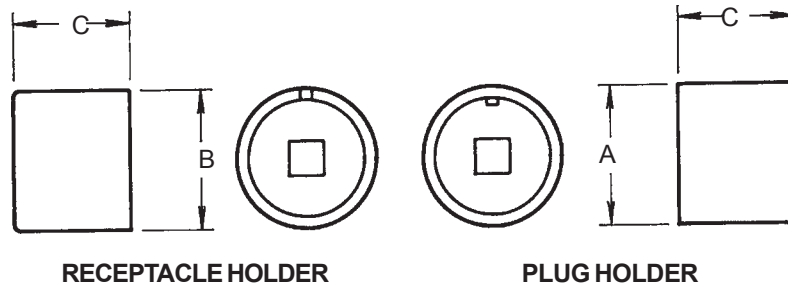
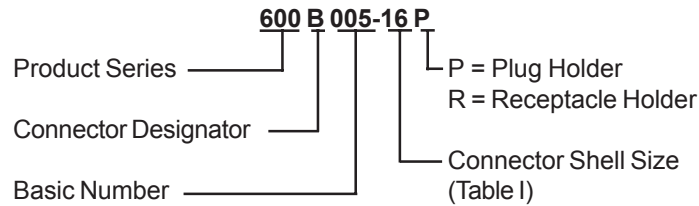


600B005
Plug and Receptacle Holder
MIL-C-5015 and MIL-C-83723 Series 2



RECEPTACLE HOLDER

PLUG HOLDER



NO POLARIZATION REQUIRED

TABLE I: CONNECTOR SHELL SIZE ORDER NUMBER

Shell Size	Max. Recommended Torque (Inch Pounds) Composite	A Dia. Max.	B Dia. Max.	C Dim. Max.
08	40	.456 (11.6)	.365 (9.3)	1.25 (31.8)
10	40	.575 (14.6)	.440 (11.2)	1.25 (31.8)
12	40	.691 (17.6)	.555 (14.1)	1.25 (31.8)
14	40	.816 (20.7)	.675 (17.1)	1.25 (31.8)
16	40	.941 (23.9)	.805 (20.4)	1.25 (31.8)
18	40	1.060 (26.9)	.930 (23.6)	1.25 (31.8)
20	80	1.185 (30.1)	1.050 (26.7)	1.25 (31.8)
22	80	1.310 (33.3)	1.175 (29.8)	1.25 (31.8)
24	80	1.435 (36.4)	1.300 (33.0)	1.25 (31.8)
28	120	1.685 (42.8)	1.520 (38.6)	1.25 (31.8)
32	120	1.935 (49.1)	1.777 (45.0)	1.25 (31.8)
36	120	2.177 (55.3)	1.980 (50.3)	1.25 (31.8)

NOTES:

1. Also mates with MIL-C-83723, Series II.
2. Metric dimensions (mm) are indicated in parentheses.
3. Material: Case hardened carbon steel with electroless nickel finish.
4. Receptacle and plug holder drives: 1/4" - Shell sizes 08, 10, 12; 3/8" - Shell sizes 14 and up.