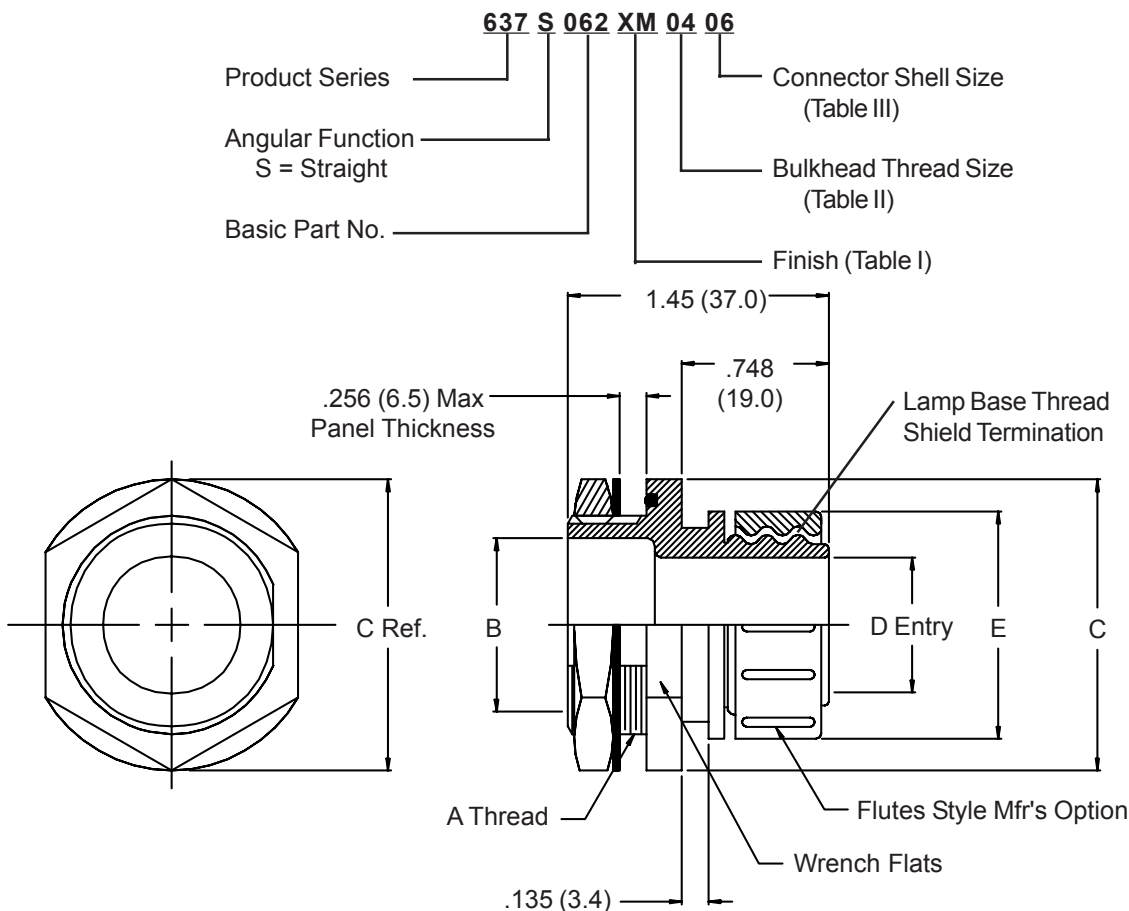


637-062 Composite Thru-Box, Panel and Bulkhead EMI/RFI/Environmental Shrink Boot Adapter



1. Metric dimensions (mm) are indicated in parentheses.
2. Consult factory for shrink boot to be supplied with product.

XM	Electroless Nickel
XW	Cadmium Olive Drab Over Electroless Nickel

Dash No.	A Thread ISO Metric	B Dia. Min.	C Max.	Max Entry Table III
01	M 16 x 1.5-6g	.394 (10.0)	1.070 (27.2)	03
02	M 20 x 1.5-6g	.551 (14.0)	1.200 (30.5)	04
03	M 27 x 2.0-6g	.866 (22.0)	1.510 (38.4)	07
04	M 36 x 2.0-6g	1.181 (30.0)	2.010 (51.1)	08

Shell Size	D		E Max.
	+ .03 - .00	(.8) (.0)	
01	.125 (3.2)	.531 (13.5)	
02	.250 (6.4)	.656 (16.7)	
03	.375 (9.5)	.781 (19.8)	
04	.500 (12.7)	.906 (23.0)	
05	.625 (15.9)	1.031 (26.2)	
06	.750 (19.1)	1.156 (29.4)	
07	.875 (22.2)	1.281 (32.5)	
08	1.000 (25.4)	1.406 (35.7)	