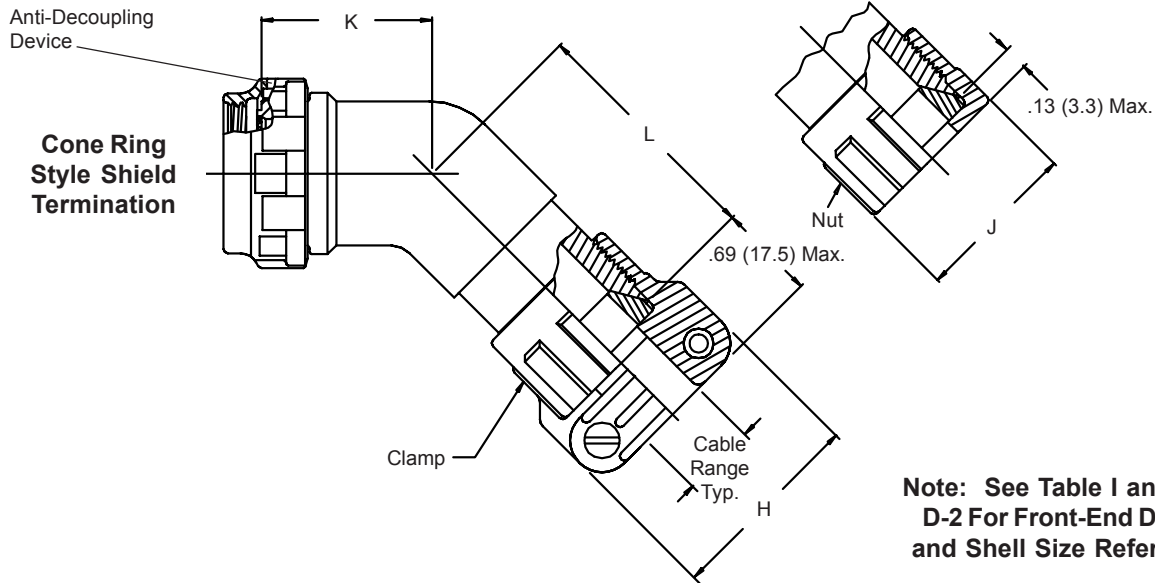


380-099 Self-Locking Rotatable Coupling Composite 45° RFI/EMI Backshell with Strain-Relief Clamp or Nut



Composite Backshells



Note: See Table I and Page D-2 For Front-End Details and Shell Size References

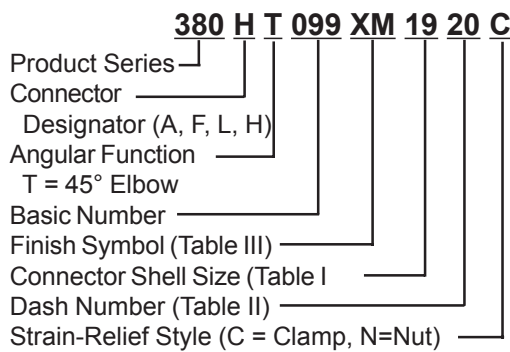


TABLE II: CABLE ENTRY

Dash No.	H		J		Cable Range *	
	±.06	(1.5)	±.06	(1.5)	Minimum	Maximum
10	.94	(23.9)	.80	(20.3)	.16	(4.0) .25 (6.4)
12	1.17	(29.7)	.93	(23.6)	.29	(5.1) .38 (9.7)
14	1.28	(32.5)	1.06	(26.9)	.40	(10.1) .44 (11.2)
16	1.41	(35.8)	1.22	(31.0)	.52	(12.7) .63 (15.9)
18	1.50	(38.1)	1.24	(31.5)	.58	(14.7) .69 (17.5)
20	1.56	(39.6)	1.37	(34.8)	.64	(16.3) .75 (19.1)
22	1.69	(42.9)	1.49	(37.8)	.72	(18.3) .88 (22.2)
24	1.81	(46.0)	1.62	(41.1)	.79	(20.0) 1.00 (25.4)
28	1.91	(48.5)	1.68	(42.7)	.89	(20.3) 1.13 (28.6)

* Cable range equals diameter of cable outer jacket.

TABLE I: CONNECTOR SHELL SIZE ORDER NUMBER

Shell Size For Connector Designator		K		L		Max Entry Dash No. *
A & F/L	H	±.06	(1.5)	±.06	(1.5)	
08	09	.72	(18.3)	.88	(22.4)	10
10	11	.75	(19.1)	.94	(23.9)	12
12	13	.75	(19.1)	1.00	(25.4)	14
14	15	.76	(19.3)	1.03	(26.2)	16
16	17	.78	(19.8)	1.06	(26.9)	20
18	19	.79	(20.1)	1.07	(27.2)	20
20	21	.82	(20.8)	1.09	(27.7)	22
22	23	.86	(21.8)	1.14	(29.0)	24
24	25	.92	(23.4)	1.17	(29.7)	28

* Consult factory for additional entry sizes available.

TABLE III: FINISH

XM*	Electroless Nickel
XW*	Cadmium Olive Drab Over Electroless Nickel

* Note: Coupling nut & saddle bars supplied unplated.

Metric dimensions (mm) are in parentheses and are for reference only.