

557-367 EMI/RFI Banding Backshell Assembly for MIL-C-24308 Connectors

557 367 M 2 03 C B

Product Series ——— 557

Basic Number ——— 367

Finish (Table III) ——— M

Shell Size (Table I) ——— 2

————— 03

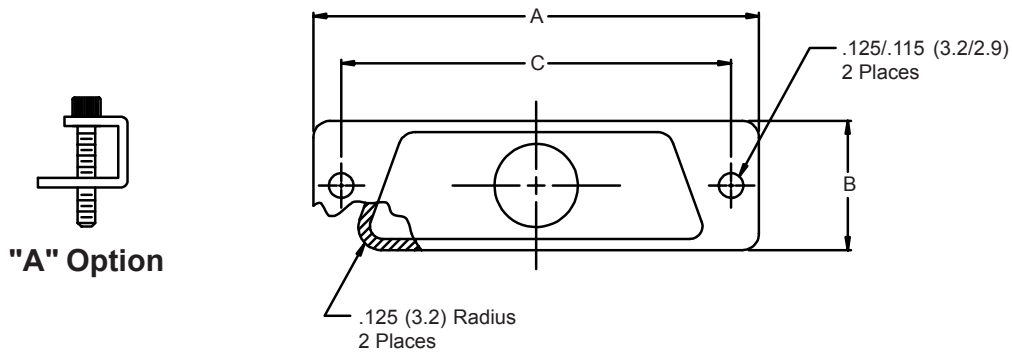
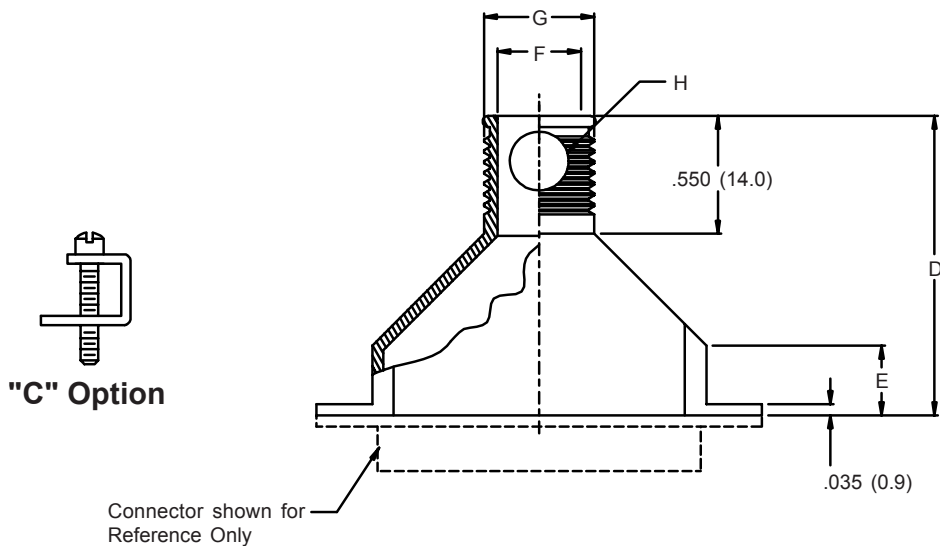
————— C

————— B

B = Band (600-051)
(Omit for None)

Jackscrew Options:
A = Hex Socket Head
C = Fillister Head
(Omit for None)

————— Cable Entry (Table II)



Metric dimensions (mm) are indicated in parentheses

557-367
EMI/RFI Banding Backshell Assembly
for MIL-C-24308 Connectors



MIL-C-24308
D-Subminiature

TABLE I: CONNECTOR INTERFACE DIMENSIONS

Shell Size	A Dim	B Dim	C Dim ±.005 (0.1)	D Dim	E Dim	Max Entry Size
1	1.203 (30.6)	.500 (12.7)	.984 (25.0)	1.190 (30.2)	.440 (11.2)	06
2	1.531 (38.9)	.500 (12.7)	1.312 (33.3)	1.270 (32.3)	.440 (11.2)	06
3	2.078 (52.8)	.500 (12.7)	1.852 (47.0)	1.550 (39.4)	.500 (12.7)	06
4	2.718 (69.0)	.500 (12.7)	2.500 (63.5)	1.690 (42.9)	.500 (12.7)	06
5	2.625 (66.7)	.609 (15.5)	2.406 (61.1)	1.670 (42.4)	.440 (11.2)	08
6	2.730 (69.3)	.668 (17.0)	2.500 (63.5)	1.690 (42.9)	.500 (12.7)	09

TABLE II: CABLE ENTRY

Entry Size	F Dia	G Dia	H Dia
03	.270 (6.9)	.360 (9.1)	.219 (5.6)
04	.312 (7.9)	.392 (10.0)	.219 (5.6)
05	.395 (10.0)	.485 (12.3)	.312 (7.9)
06	.420 (10.7)	.510 (13.0)	.343 (8.7)
07	.500 (12.7)	.580 (14.7)	.343 (8.7)
08	.529 (13.4)	.620 (15.7)	.343 (8.7)
09	.573 (14.6)	.690 (17.5)	.343 (8.7)

**TABLE III:
FINISH OPTIONS**

Symbol	Finish
B	Cadmium Plate/Olive Drab
C*	Black Anodize
G*	Anodic Hard Coat
J	Gold Iridite over Cadmium Plate over Electroless Nickel
LF	Cadmium Plate/Bright over Electroless Nickel
M	Electroless Nickel
N	Cadmium Plate/Olive Drab over Electroless Nickel
NC	Zinc Cobalt/Dark Olive Drab
NF	Cadmium Plate/Olive Drab over Electroless Nickel
T	Cadmium Plate/Bright over Electroless Nickel
U**	Cadmium Plate/Black
ZN	Zinc-Nickel Alloy/Olive Drab

*Anodize finish is not suitable for EMI shielding or grounding applications.

**Applicable to corrosion resisting steel backshells and accessories. Consult factory for other available finishes.

Metric dimensions (mm) are indicated in parentheses