

557 T 175 M 2 F0 B 1 F 02

Basic Part No. ————
 Cable Entry Style ————
 T = Top
 Basic Part Number ————
 Finish Symbol (Page 3) ————
 Shell Size (Table I) ————
 Receptacle Mounting (Table II) ————
 F0 = Front Mounting
 R1-R9 = Rear Mounting

Inner Support Ring Dash No. (Table III), N = No Support Ring
 F = Strain Relief, G = Gland Nut,
 D = Dual "G" Spring With Strain Relief
 0 = Without EMI Gasket,
 1 = With EMI Gasket
 Jackscrew Type (Page A-4)

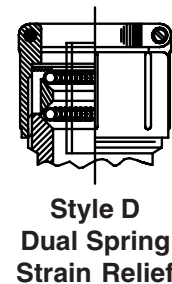
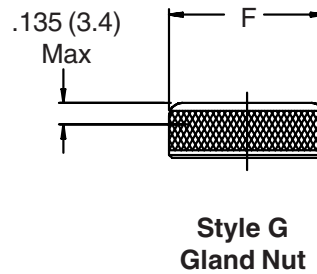
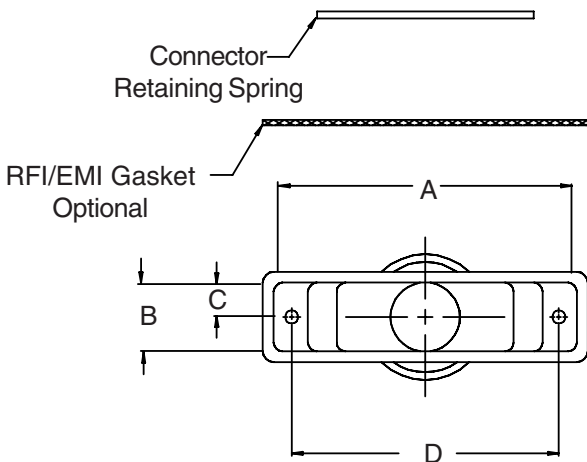
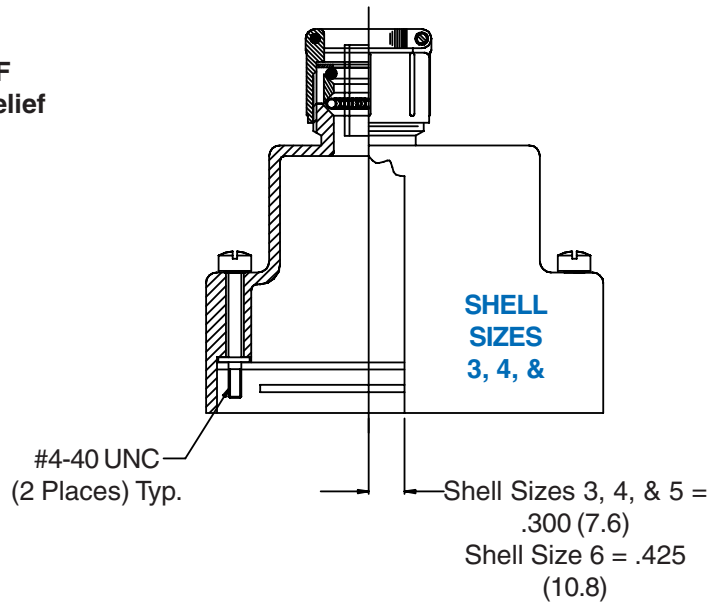
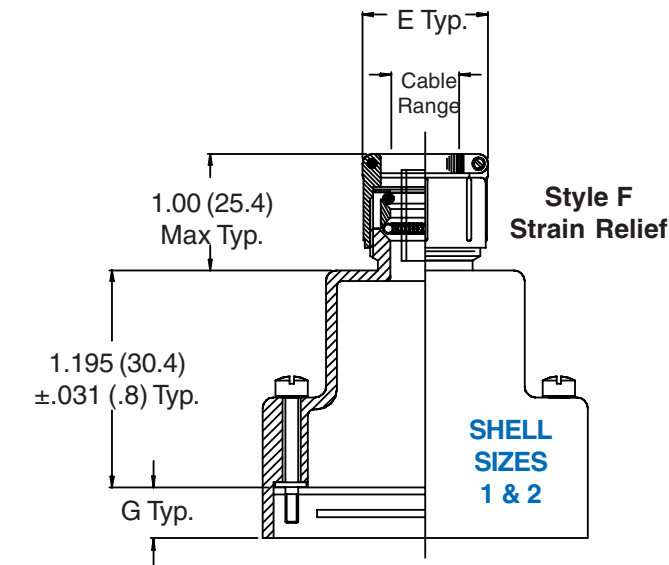


TABLE I: SHELL SIZE & CONNECTOR INTERFACE DIMENSIONS

Shell Size	Com'l Shell Size Ref	A		B		C		D	
			(mm)		(mm)		(mm)	±.005	(.1)
1	E/09	1.241	(31.5)	.515	(13.0)	.258	(6.6)	.984	(25.0)
2	A/15	1.569	(39.9)	.515	(13.0)	.258	(6.6)	1.312	(33.3)
3	B/25	2.116	(53.7)	.515	(13.0)	.258	(6.6)	1.852	(47.0)
4	C/37	2.757	(70.0)	.515	(13.0)	.258	(6.6)	2.500	(63.5)
5	D/50	2.663	(67.6)	.625	(15.9)	.313	(8.0)	2.406	(61.1)
6	F/104	2.757	(70.0)	.688	(17.5)	.344	(8.7)	2.500	(63.5)

TABLE I (Continued): CABLE ENTRY & GLAND NUT

Shell Size	Com'l Shell Size Ref	E Max	F Max	Cable Range	
				Min	Max
1	E/09	.843 (21.4)	.625 (15.9)	.125 (3.2)	.250 (6.4)
2	A/15	.968 (24.6)	.750 (19.1)	.156 (4.0)	.375 (9.5)
3	B/25	1.156 (29.4)	1.000 (25.4)	.280 (7.1)	.500 (12.7)
4	C/37	1.156 (29.4)	1.000 (25.4)	.280 (7.1)	.500 (12.7)
5	D/50	1.218 (30.9)	1.250 (31.8)	.375 (9.5)	.625 (15.9)
6	F/104	1.468 (37.3)	1.375 (34.9)	.625 (15.9)	.875 (22.2)

TABLE II: RECEPTACLE MOUNTING

Dash No.	Panel Thickness		G	
		(mm)		(mm)
R1	.031	(.8)	.247	(6.3)
R2	.047	(1.2)	.231	(5.9)
R3	.062	(1.6)	.216	(5.5)
R4	.093	(2.4)	.185	(4.7)
R5	.104	(2.6)	.174	(4.4)
R6	.125	(3.2)	.153	(3.9)
R7	.156	(4.0)	.125	(3.2)
R8	.135	(3.4)	.140	(3.6)
F0	N/A		.305	(7.7)

TABLE III: SUPPORT RING

Dash No.	Inner Support	
	I.D.	O.D.
01	.187 (4.7)	.227 (5.8)
02	.218 (5.5)	.258 (6.6)
03	.250 (6.4)	.290 (7.4)
04	.281 (7.1)	.321 (8.2)
05	.312 (7.9)	.352 (8.9)
06	.343 (8.7)	.383 (9.7)
07	.375 (9.5)	.415 (10.5)
08	.406 (10.3)	.446 (11.3)
09	.438 (11.1)	.478 (12.1)
10	.468 (11.9)	.508 (12.9)

1. Metric dimensions (mm) are indicated in parentheses.
2. **DO NOT USE CONNECTORS WITH FLOAT MOUNTINGS.**
3. For front mount, mating connector must be mounted to panel using M24308/26 female screwlocks. For rear mount, use Glenair GK134.
4. For proper termination it is recommended that Glenair 469-001 shield support ring be used on all assemblies. Place ring over wire bundle and under shield, position under G-Spring.