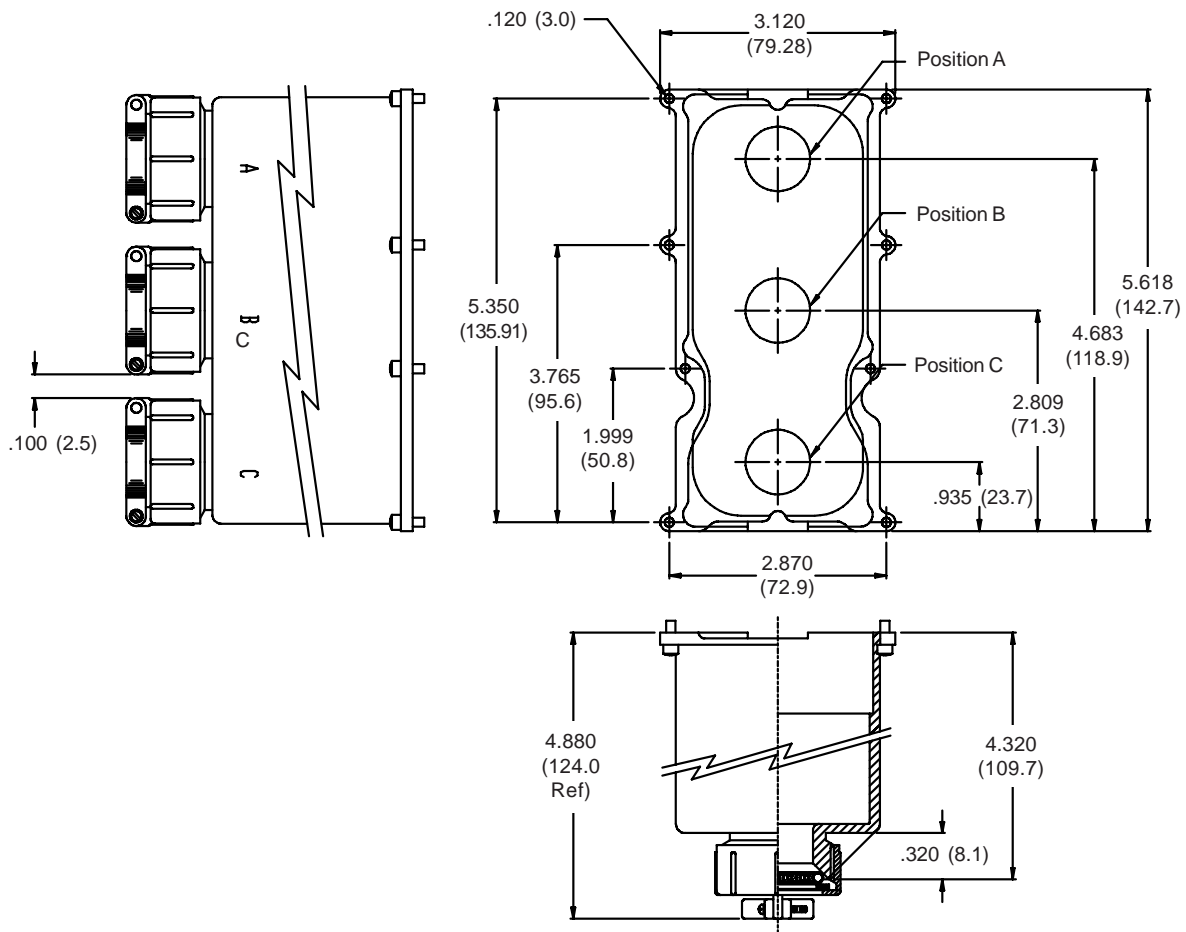
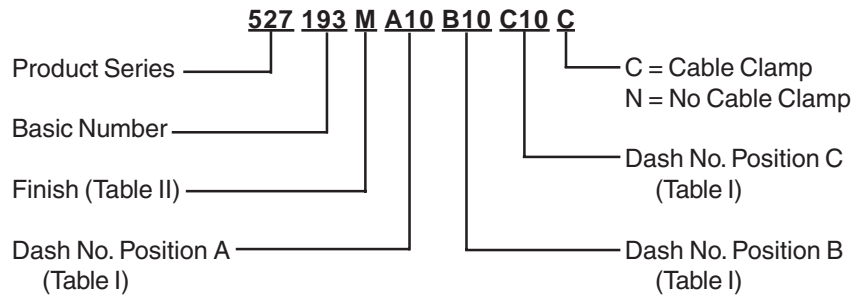


# 527-193 EMI/RFI Backshell Assembly for Size 3 ARINC 600 Series Connectors



Metric dimensions (mm) are indicated in parentheses.

**527-193**  
**EMI/RFI Backshell Assembly**  
for Size 3 ARINC 600 Series Connectors



**TABLE I: CABLE ENTRY**

| Dash No. | Cable Range  |              | X Dia        |
|----------|--------------|--------------|--------------|
|          | Min          | Max          |              |
| 01       | .062 (1.6)   | .125 (3.2)   | .620 (15.7)  |
| 02       | .125 (3.2)   | .250 (6.4)   | .750 (19.1)  |
| 03       | .157 (4.0)   | .375 (9.5)   | .870 (22.1)  |
| 04       | .282 (7.2)   | .500 (12.7)  | 1.000 (25.4) |
| 05       | .407 (10.3)  | .625 (15.9)  | 1.120 (28.4) |
| 06       | .532 (13.5)  | .750 (19.1)  | 1.250 (31.8) |
| 07       | .657 (16.7)  | .875 (22.2)  | 1.370 (34.8) |
| 08       | .782 (19.9)  | 1.000 (25.4) | 1.500 (38.1) |
| 09       | .907 (23.0)  | 1.125 (28.6) | 1.620 (41.1) |
| 10       | 1.032 (26.2) | 1.250 (31.8) | 1.750 (44.5) |

**TABLE II: FINISH OPTIONS**

| Symbol | Finish  |
|--------|---|
| B      | Cadmium Plate/Olive Drab                                |
| C*     | Black Anodize   |
| G*     | Anodic Hard Coat  |
| J      | Gold Iridite over Cadmium Plate over Electroless Nickel |
| LF     | Cadmium Plate/Bright over Electroless Nickel            |
| M      | Electroless Nickel                                      |
| N      | Cadmium Plate/Olive Drab over Electroless Nickel        |
| NC     | Zinc Cobalt/Dark Olive Drab                             |
| NF     | Cadmium Plate/Olive Drab over Electroless Nickel        |
| T      | Cadmium Plate/Bright over Electroless Nickel            |
| U**    | Cadmium Plate/Black                                     |
| ZN     | Zinc-Nickel Alloy/Olive Drab                            |

\*Anodize finish is not suitable for EMI shielding or grounding applications.

\*\*Applicable to corrosion resisting steel backshells and accessories. Consult factory for other available finishes.

**TABLE III: CONNECTOR DESIGNATOR**

ARINC 600 series connector backshells are designed to replace the insert retainer plates. Due to non-standard modifications by the connector manufacturer, the backshell may require special design alterations to mate properly. The following should be used to determine if a backshell modification is required. Prior to ordering, consult factory with connector part numbers not shown to ensure a proper fit.

| Connector Designator | Connector Description                               |
|----------------------|---|
| P1                   | Cannon BKAD****322 Series Plug                      |
| P2                   | Cannon/Radiall Environmental Plug                   |
| P3                   | Cannon/Boeing BACC 66 Plug                          |
| P5                   | Radiall/Boeing BACC66 Plug                          |
| P6                   | Cannon BKAC & BKAE XXX322 Series Environmental Plug |

Metric dimensions (mm) are indicated in parentheses.