



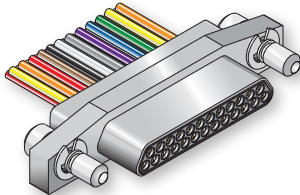
# SERIES GHTM WELL-MASTER 260° Downhole Micro-D Connector



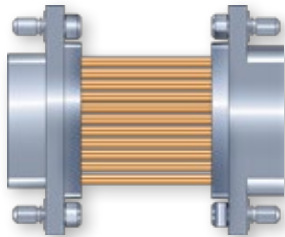
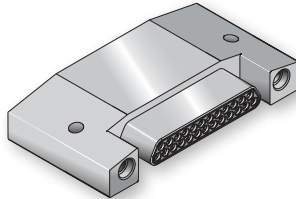
Reference information / insert arrangements

In addition to extreme high temperature tolerance, and demating resistance to vibration and shock, the Glenair Well-Master™ 260° Micro-D connector features unique shell packaging designed to conform with the cylindrical shape of instrument housings. Special angled mounting ears facilitate incorporation of the connector into available space, and the Micro-D's overall reduced size compared to other rectangular connector solutions allows for more efficient utilization.

**High Temperature Micro-D with Insulated Wire Pigtails**



**High Temperature PCB Header**



**High Temperature Back-to-Back Micro-D**



**GHTM High Temperature Insert Arrangements (Pin Face View)**

<p>1 2 3 4 5 6 7 8 9</p> <p>9</p>	<p>1 2 3 4 5 6 7 8 9 10 11 12 13 14 15</p> <p>15</p>	<p>1 2 3 4 5 6 7 8 9 10 11 12 13 14 15 16 17 18 19 20 21</p> <p>21</p>	<p>1 2 3 4 5 6 7 8 9 10 11 12 13 14 15 16 17 18 19 20 21 22 23 24 25</p> <p>25</p>
<p>1 2 3 4 5 6 7 8 9 10 11 12 13 14 15 16 17 18 19 20 21 22 23 24 25 26 27 28 29 30 31</p> <p>31</p>	<p>1 2 3 4 5 6 7 8 9 10 11 12 13 14 15 16 17 18 19 20 21 22 23 24 25 26 27 28 29 30 31 32 33 34 35 36 37</p> <p>37</p>	<p>1 2 3 4 5 6 7 8 9 10 11 12 13 14 15 16 17 18 19 20 21 22 23 24 25 26 27 28 29 30 31 32 33 34 35 36 37 38 39 40 41 42 43 44 45 46 47 48 49 50 51</p> <p>51</p>	

Mating face of pin connector. Socket connector contact numbers are reversed.

