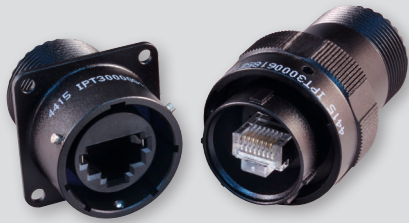




RJ45 CAT 5E ETHERNET Series IPT (26482 Type) Bayonet Coupler

Product Selection Guide



IPT300

Page F-2

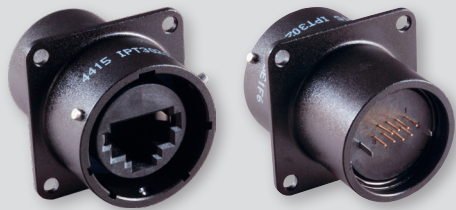
SuperSeal™ Coupler with Accessory Threads and RJ45 Plug-to-Jack (Plug) or Jack-to-Jack (Receptacle).



IPT301

Page F-4

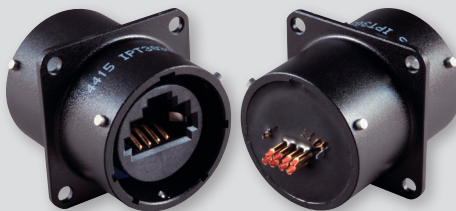
SuperSeal™ Connector with Accessory Threads and RJ45 Plug (Plug) or Jack (Receptacle) to Crimp Removable Contacts.



IPT302

Page F-6

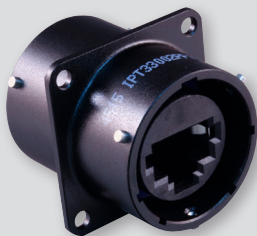
SuperSeal™ Receptacle with Jack to PC Tail Termination.



IPT303

Page F-7

SuperSeal™ Receptacle with Jack to Solder Cup Termination.



IPT330

Page F-8

SuperSeal™ Feedthrough Receptacle with Jack-to-Jack RJ45.



IPT300H

Page F-9

SuperSeal™ Connector and Backshell Options.