



RJ45 CAT 5E ETHERNET Series IPT (26482 Type) Bayonet Coupler

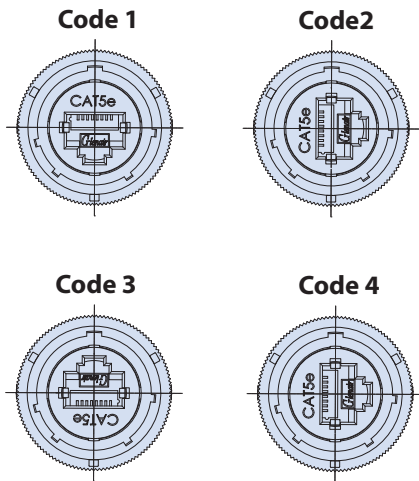


IPT302 Receptacle with Jack to PC Tail Termination

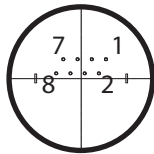


How to Order							
Sample Part Number	IPT302	02	G	18	5E	1	F7
Basic Number	IPT302						
Connector Style¹	02 = Front panel Mount Square Flange Receptacle 07 = Rear Panel Mount Jam Nut Receptacle						
Insert-to-Shell Grounding	G = Insert grounded to shell Omit for none (for use with shielded cable) (Use only with G3, F11 or F7 finish)						
Shell Size	18						
RJ45 Category²	5E = Cat 5E For Cat 6A applications consult factory						
RJ45 Orientation	1,2,3 or 4						
Material/Finish	Omit for Aluminum/Cadmium, Olive Drab (G3) F6 = Aluminum/Black Polymer Electrocoat F7 = Aluminum/Conductive Black Zinc Nickel F11 = Aluminum/Electroless Nickel						

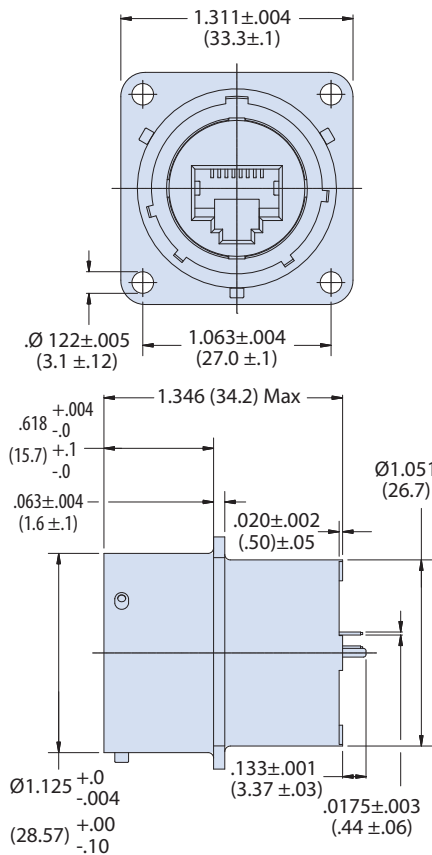
RJ45 Receptacle, Orientation Options



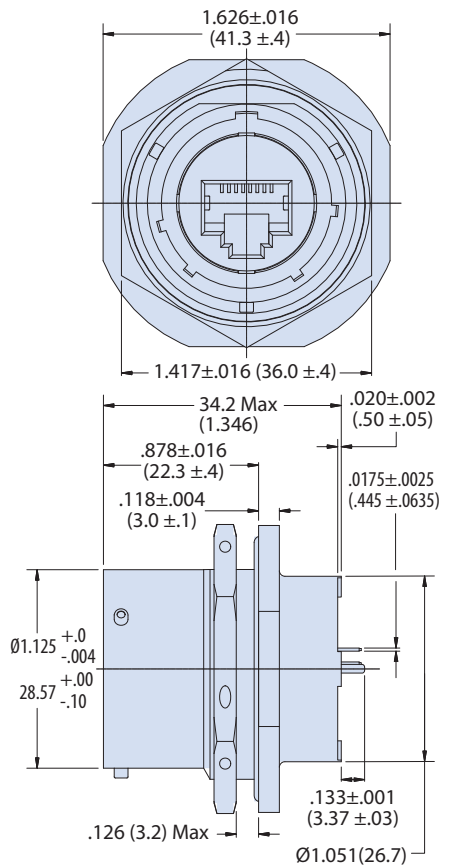
PC tail layout (Code 1 Orientation Shown)



02 - FRONT PANEL MOUNT SQUARE FLANGE RECEPTACLE



07 - REAR PANEL MOUNTING JAM NUT RECEPTACLE



NOTES

- See Section A for recommended panel cut out dimensions

F