

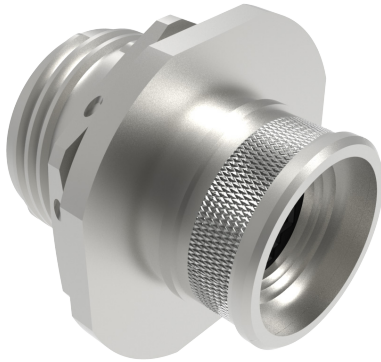


RJ45 CAT 5E/6A ETHERNET

MIL-DTL-38999 Series III Type Connectors



233-308 Coupler with integrated banding platform



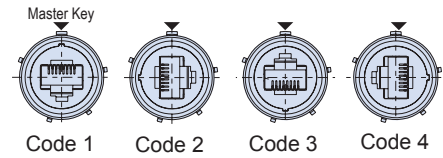
Part Number Development							
Sample Part Number	233-308	NF	00	G	-17	5H	N 1
Basic Number	233-308						
Finish	See Material and Finish table						
Connector Style ¹	See Table V						
Insert-to-Shell Grounding	- = Inline shielded RJ45 G = Inline shielded and grounded to the shell ("G" option only with receptacle)						
Shell Size	17 or 19						
RJ45 Category	5H = CAT 5e 6A = CAT 6A (CAT 6A receptacle only, for use with 233-312)						
Alternate Key Position ¹	Per MIL-DTL-38999 A, B, C, D, E, N = Normal						
RJ45 Orientation	1, 2, 3, or 4						

B

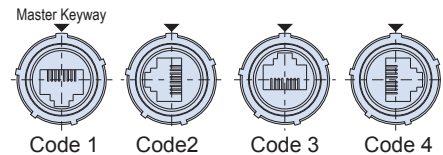
Material and Finish	
M	Aluminum/Electroless Nickel
NF	Aluminum/Cadmium, Olive Drab, over Electroless Nickel (500 hour salt spray)
MT	Aluminum/Nickel PTFE
ME	Aluminum/Electroless Nickel (96 hour salt spray)
MA	Aluminum/ Electroless Nickel, Matte Finish (96 hour salt spray)
TZ	Aluminum/ Tin-Zinc, Green-Gold
ZN	Aluminum/ Zinc Ni, Olive Drab
ZR	Aluminum/Black Zinc-Nickel (Tri-Valent Cr)
XM	Composite/Electroless Nickel
XMT	Composite/Nickel-PTFE
XO	Composite/No Finish
XW	Composite/Cadmium, Olive Drab, Over Electroless Nickel (500 Hour Salt Spray)
Z1	Stainless Steel/Passivate
ZL	Stainless Steel/ Electro-Deposited Nickel
ZW	Stainless Steel/Cad Olive Drab Over Nickel
AB	Marine Bronze/None (Clean Only)

Connector Style	
00	Wall mount receptacle with slotted holes ³
D0	Wall mount receptacle with round holes
CM	Wall mount receptacle with metric clinch nuts
CS	Wall Mount Receptacle with standard clinch nuts
07	rear panel mount, jam nut receptacle
05	Inline Receptacle
G6	Plug

RJ45 Orientation Options (Plug Face)



RJ45 Orientation Options (Receptacle Face)

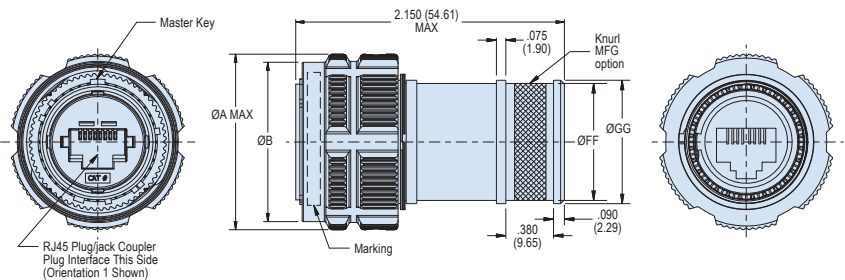


NOTES

- Interpret drawing per ASME y14.5m - 2009.
- Material/finishes:
 - Shell, barrel, coupling nut, jam nut - see Table I (Composite coupling nut no plating required).
 - Insulators: High grade rigid dielectric/N.A.
 - Contacts: Copper alloy, gold plated
 - Seals: Silicone based elastomer
 - RJ45 coupler housing: UL94V-0 compliant ABS or PPS
 - Hardware: Stainless steel/passivated
- RJ45 jack/plug specifications:
 - RJ45 coupler maintains shield continuity
 - Wiring: straight through
 - Rohs compliant
 - Electrical: current rating: 1.5 Amp
 - D.W.V.: 1000 VDC, 2 MA MAX.
 - I.R.: 500 Mega ohms @ 500 VDC
 - Operating temperature range: -40°c to +120°c
- Receptacle connector designed to meet IP67 sealing unmated condition.

G6 - PLUG

G6 Plug Dimensions								
Shell Size	Ø A Max		Ø B		ØFF		ØGG	
	in	mm	in	mm	in	mm	in	mm
17	1.406	35.71	1.276	32.41	.945	24.00	.990	25.15
19	1.516	38.51	1.382	35.10	1.050	26.67	1.100	27.94
				1.268				
				32.21				
				34.90				





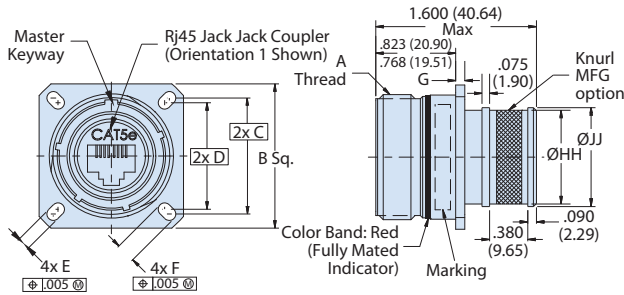
RJ45 CAT 5E/6A ETHERNET

MIL-DTL-38999 Series III Type Connectors

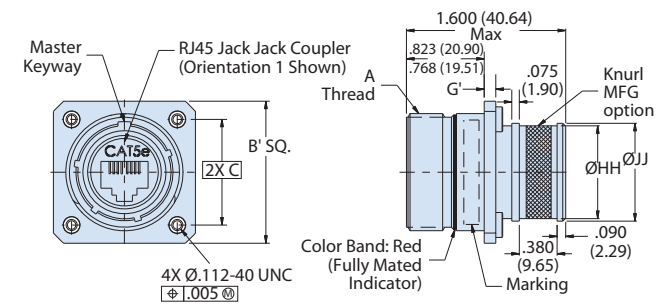


233-308 Coupler with integrated banding platform

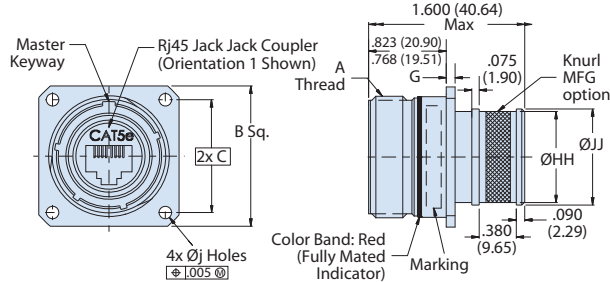
00 - WALL MOUNT RECEPTACLE WITH SLOTTED HOLES



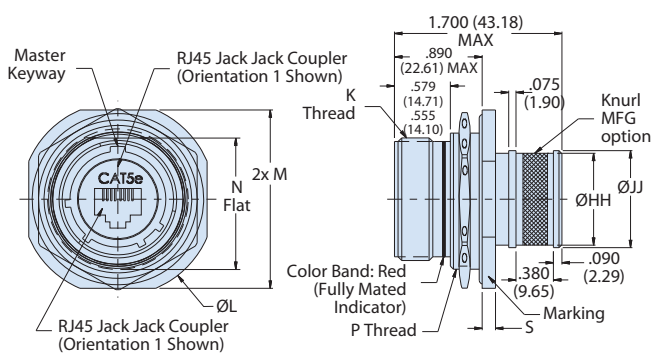
CS - WALL MOUNT RECEPTACLE WITH STANDARD CLINCH NUTS



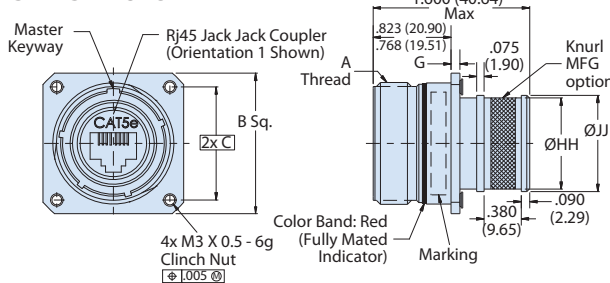
D0 - WALL MOUNT RECEPTACLE WITH ROUND HOLES



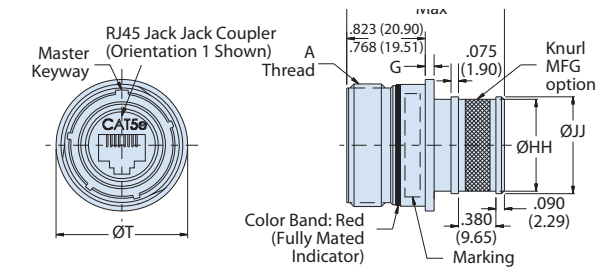
07 - JAM NUT MOUNT RECEPTACLE (SEE TABLE III)



CM - WALL MOUNT RECEPTACLE WITH METRIC CLINCH NUTS



05 - INLINE RECEPTACLE (SEE TABLE III)



Wall Mount Receptacle Dimensions												
Shell Size	A Thread	B SQ	B' SQ	C BSC	D BSC	E	F	G	G'	Ø HH	Ø JJ	Ø J Holes
17	1.1875-.1P-.3L-TS-2A	1.323 (33.60)	1.437 (36.50)	1.062 (26.97)	0.969 (24.61)	0.136 (3.45)	0.202 (5.13)	0.098 (2.49)	0.122 (3.08)	0.960 (24.38)	1.022 (25.96)	0.136 (3.45)
		1.299 (32.99)	1.397 (35.48)						0.083 (2.11)			
19	1.2500-.1P-.3L-TS-2A	1.449 (36.80)	1.531 (38.89)	1.156 (29.36)	1.062 (26.97)	0.120 (3.05)	0.186 (4.72)	0.083 (2.11)	0.153 (3.89)	1.062 (26.97)	1.125 (28.58)	0.120 (3.05)
		1.425 (36.20)	1.491 (37.87)						0.114 (2.90)			

Jam Nut Mount and Inline Receptacle Dimensions								
Shell Size	K Thread	Ø L	M	N Flat	P Thread	R Thread	S	Ø T Max
17	1.1875-.1P-.3L-TS-2A	1.764 (44.81)	1.642 (41.71)	1.191 (30.25)	M32 X 1.0-6g 0.100R	M25 X 1.0-6g 0.100R	0.122 (3.10)	1.406 (35.71)
		1.740 (44.20)	1.610 (40.89)	1.181 (30.00)			0.083 (2.11)	
19	1.2500-.1P-.3L-TS-2A	1.949 (49.50)	1.827 (46.41)	1.316 (33.43)	M35 X 1.0-6g 0.100R	M28 X 1.0-6g 0.100R	0.153 (3.89)	1.516 (38.51)
		1.925 (48.90)	1.795 (45.59)	1.306 (33.17)			0.114 (2.90)	

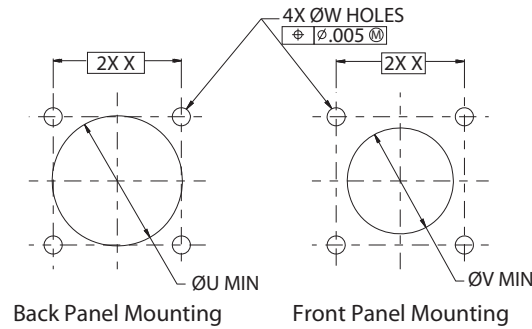


RJ45 CAT 5E/6A ETHERNET

MIL-DTL-38999 Series III Type Connectors

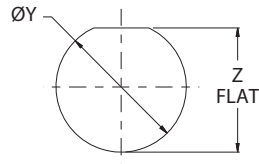


233-308 Coupler with integrated banding platform



Recommended Mounting Holes

Panel Thickness .228 Max (See Table IV)



Recommended Panel Cut Out

Panel Thickness .126-.062 (See Table IV)

PANEL CUTOUT & WALL MOUNT												
Shell Size	Ø U Min		Ø V Min		W Holes		X BSC		Ø Y		Z Flat	
	in	mm	in	mm	in	mm	in	mm	in	mm	in	mm
17	1.219	30.96	1.016	25.81	0.133	3.38	1.062	26.97	1.270	32.26	1.210	30.73
					0.123	3.12			1.260	32.00		
19	1.297	32.94	1.141	28.98	0.133	3.38	1.156	29.36	1.395	35.43	1.335	33.91
					0.123	3.12			1.385	35.18		

B