



RJ45 CAT 5E ETHERNET

MIL-DTL-38999 Series III Type Connectors



233-305 Quadrax interface adapter
with accessory threads



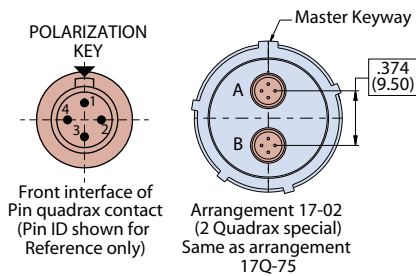
Receptacle front View

Receptacle rear View

Part Number Development									
Sample Part Number	233-305	NF	00	-	17	5H	P	N	T
Basic Number	233-305								
Finish	See Material and Finish table								
Connector Style	See Connector Style table								
Insert-to-Shell Grounding ²	- = Inline shielded RJ45 insert G = Shielded and grounded to shell								
Shell Size	17 or 19								
RJ45 Category	5H = CAT 5e For Cat 6A applications consult factory								
Contact Style	P = Pin S = Socket								
Alternate Key Position ¹	A, B, C, D, E, N = Normal; Per MIL-DTL-38999								
Shrink Boot	T = Part No. 770-028 (Omit for None)								

B

Partial View Of Connector Quadrax Interface



Material and Finish	
NF	Aluminum/Cadmium, Olive Drab
ME	Aluminum/Electroless Nickel
MT	Aluminum/Nickel PTFE
ZR	Aluminum/Black Zinc-Nickel

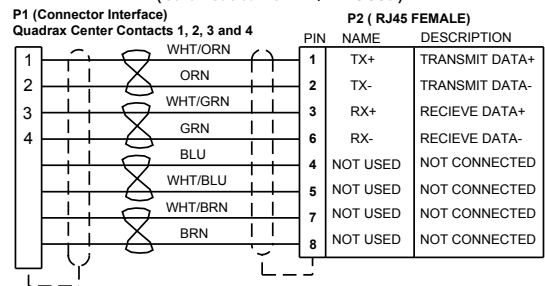
Connector Style	
05	Inline Receptacle
07	rear panel mount, jam nut receptacle
00	Wall mount receptacle with slotted holes
D0	Wall mount receptacle with round holes
CM	Wall mount receptacle with metric clinch nuts
G6	plug

Jam Nut Dimensions					
Shell Size	Ø K	L	M Flat	R	Ø S
17	1.764 (44.81)	1.642 (41.71)	1.191 (30.25)	.122 (3.10)	1.275 (32.39)
	1.740 (44.20)	1.610 (40.89)	1.181 (30.00)	.083 (2.11)	
19	1.949 (49.50)	1.827 (46.41)	1.316 (33.43)	.153 (3.89)	1.337 (33.96)
	1.925 (48.90)	1.795 (45.59)	1.306 (33.17)	.114 (2.90)	

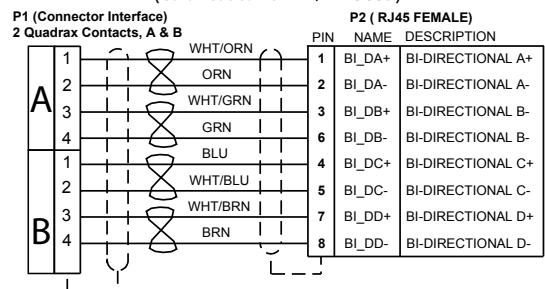
NOTES

- See Section A for alternate key/keyway positions and panel cutout dimensions
- G option is inline shielded and grounded to shell, available for receptacle only
- Pin contact mates with P/N 854-002 Socket contact mates with P/N 854-001
- Connector style 00 with slotted hole is front panel mount only
- Meets IP67 in unmated condition, IP68 mated
- Both plug and receptacle connectors have rear RJ45 jack

Wiring Diagram for Ethernet 10base-T & 100 Base-TX (Color Codes Per EIA/TIA 568B)



Wiring Diagram for Ethernet 1000base-T (Gigabit Ethernet) (Color Codes Per EIA/TIA 568B)



Thread Dimensions			
Shell Size	A Thread	G Thread	N Thread
17	1.1875-.1P-.3L-TS-2A	M25 x 1.0-6g 0.100R	M32 x 1.0-6g 0.100R
19	1.2500-.1P-.3L-TS-2A	M28x 1.0-6g 0.100R	M35 x 1.0-6g 0.100R

Wall Mount Receptacle Dimensions						
Shell Size	B Sq	C BSC	D BSC	E	F	Ø H Holes
17	1.323 (33.60)	1.062 (26.97)	.969 (24.61)	.136 (3.45)	.202 (5.13)	.136 (3.45)
	1.299 (32.99)					
19	1.449 (36.80)	1.156 (29.36)	1.062 (26.97)	.120 (3.05)	.186 (4.72)	.120 (3.05)
	1.425 (36.20)					



RJ45 CAT 5E ETHERNET

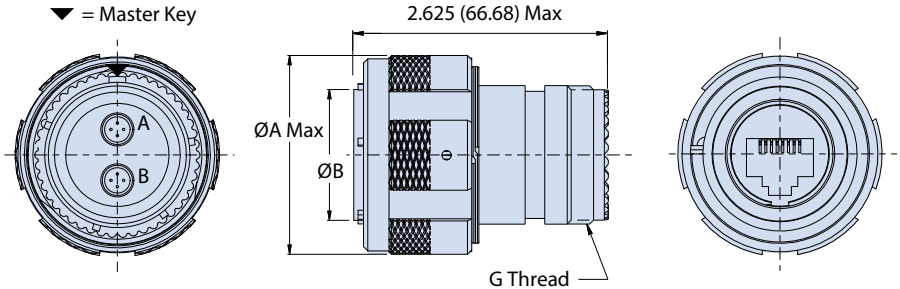
MIL-DTL-38999 Series III Type Connectors



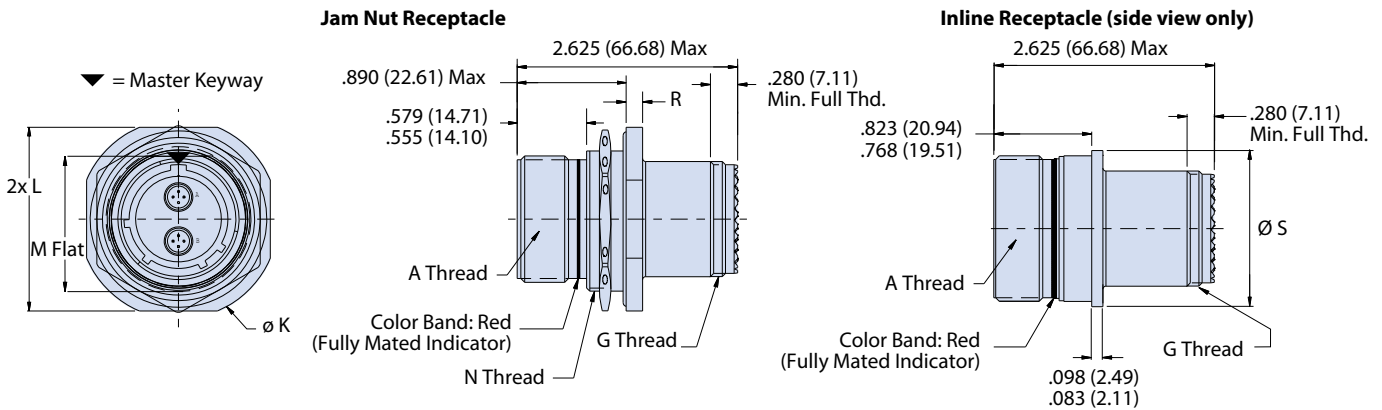
233-305 Quadrax interface adapter
with accessory threads

G6 - PLUG WITH ACCESSORY THREADS

Plug Dimensions				
Shell Size	Ø A		Ø B	
	in	mm	in	mm
17	1.406	35.71	.928	23.57
			.922	23.42
19	1.516	38.51	1.033	26.24
			1.027	26.09

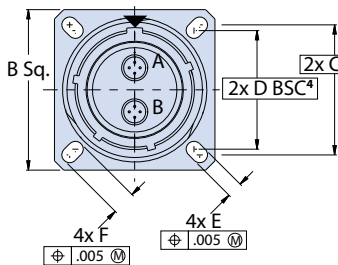


07 - REAR PANEL MOUNT, JAM NUT AND 05 - INLINE RECEPTACLE WITH ACCESSORY THREADS

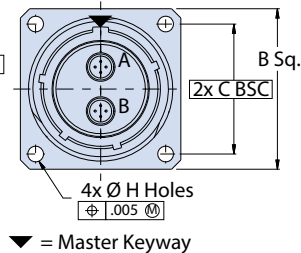


00, D0 AND CM - WALL MOUNT RECEPTACLES WITH ACCESSORY THREADS

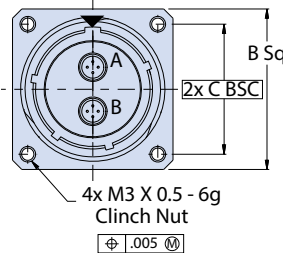
00 - Wall Mount Receptacle with Slotted Holes (Mating Face)



D0 - Wall Mount Receptacle With Round Holes (Mating Face)

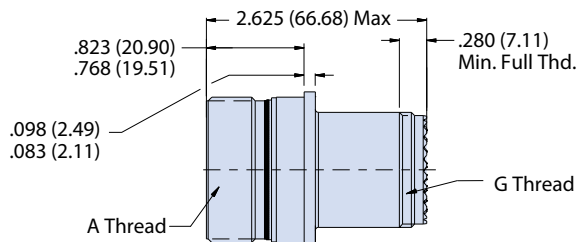


CM - Wall Mount Receptacle With Metric Clinch Nuts (Mating Face)



All external dimensions, features, etc. compliant with D38999/20, /24, &/26. Consult factory for additional information.

00 and D0 - Wall Mount Receptacle



CM - Wall Mount Receptacle

