



882-035 Panel Mount Plug, Push-Pull QDC Coupling, 40GbE

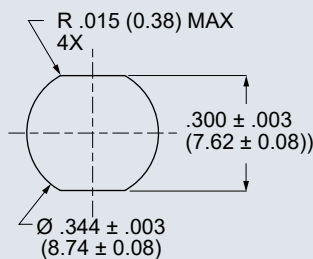


40GbE. Ultraminiature. High performance. 882-035 SuperFly Datalink connectors have one, El Ochito® octaxial contact housing eight pin contacts. Compatible with #24 to #28 AWG Cat 6A and Cat 8 Ethernet cable. Supplied as unassembled kit. Terminate wires to contacts with crimp tool (purchased separately). 882-035 plugs feature push-pull mating and demating. Braided cable shield terminates to connector with supplied bushing. **Mates to 882-002, -005, -008, -038 receptacles.**

How To Order Panel Mount Plug

Sample Part Number	882-035	-M	-01
Series	882-035 = Panel Mount Plug		
Shell Material and Finish	M = Aluminum / Electroless Nickel MT = Aluminum / Nickel-PTFE ZR = Aluminum / Black Zinc-Nickel Z2 = Aluminum / Aluminum Gold Z1 = Stainless Steel / Nickel-PTFE		
Cable Dash No. (See Table I)	-01 thru -09; Follow Assembly Instruction A880001-(dash no)		

Recommended Panel Cutout



882-035 Components

Connector is supplied unassembled. Assembly instructions are packaged with kit.

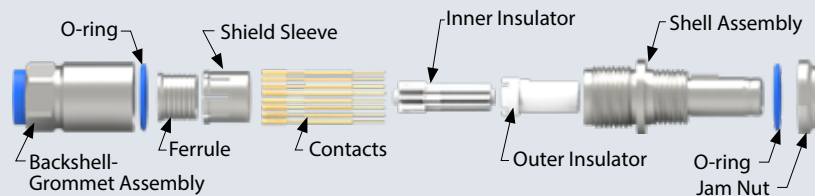
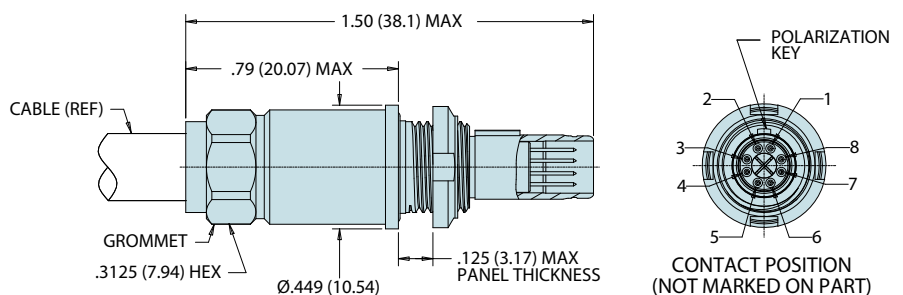


Table I: Cable Accommodated

Dash No.	Cable Part No.	Wire Size (AWG)	Cable Rating
-01	963-003-26	26	Cat 6A 10 GBase-T
-02	963-033-26	26	
-03	963-037-24	24	
-04	963-033-24	24	
-05	963-003-24	24	Cat 8 40 GBase-T
-06	963-033-28	28	
-07	963-132-26	26	
-08	963-132-24	24	
-09	963-135-26	26	



Specifications

- Operating temp.: -65° to +175°C
- Impedance: 100 ohms
- DWV: 500 Vrms unmated
- Current Rating: 1.5 A
- IR: 1000 MΩ min.
- Durability: 2000 mating cycles
- Ingress protection: IP67

Construction

- Shell, backshell: aluminum alloy or stainless steel
- Insulators: high-grade rigid dielectric
- Contacts: copper alloy, 50 microinches gold over nickel plating
- Grommet: fluorosilicone
- O-ring: fluorosilicone
- Shield sleeve, ferrule, spline: copper alloy, electroless nickel plated

Contact Crimp Tools

Crimp Tool



809-015
(M22520/2-01)

Positioner for Hand Crimp Tool



859-101
(K1906)

El Ochito® White