



882-017 PCB Plug, Push-Pull QDC Coupling, 40GbE



40GbE. Ultraminiature. Rear panel jam-nut mount. PCB terminals.

882-017 SuperFly Datalink connectors have one, El Ochito® octaxial contact housing eight pin contacts. Attach connector to .100 (2.54) maximum thickness panel with spanner nut. PC tail contacts are gold plated or solder dipped in 63/37 tin-lead. Contacts are epoxy-sealed and are non-removable. Fluorosilicone O-ring for watertight seal. **Mates to 882-002, -005, -008, -038.**

SIZE AND WEIGHT SAVING

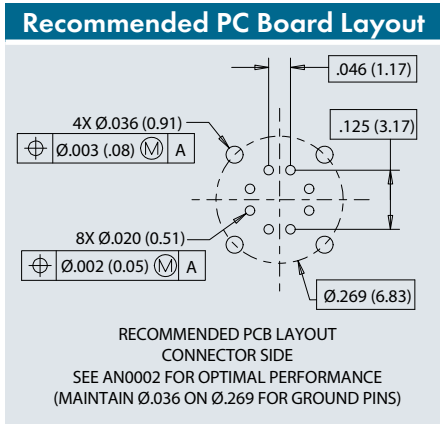
- Smallest 40Gb Ethernet aerospace-grade connector

FAST MATING

- Push-to-mate, pull to de-mate
- 5 pounds breakaway force

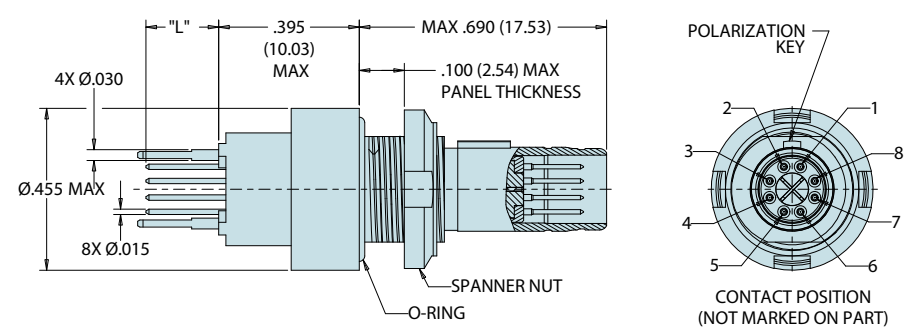
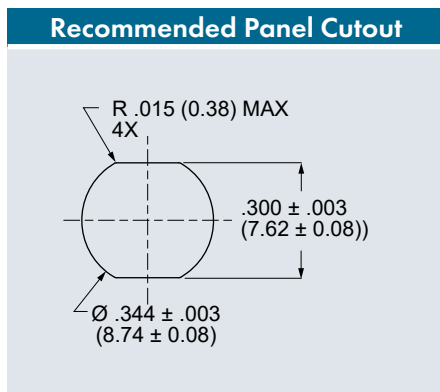
HARSH ENVIRONMENT

- EMI protection
- Water ingress
- Shock and vibration



How To Order PCB Plug

Sample Part Number	882-017	-M	G	-.125
Product	882-017 = Panel Mount, PCB Plug			
Shell Finish	M = Electroless Nickel (aluminum shell) MT = Nickel-PTFE (aluminum shell) ZR = Black Zinc-Nickel (aluminum shell) ZZ = Gold (aluminum shell) ZMT = Nickel-PTFE (stainless steel shell)			
PC Tail Finish	S = Solder dip, 63/37 tin-lead G = Gold			
PC Tail Length	.080 = .080 in. (2.03 mm.)	.125 = .125 in. (3.18 mm.)	.175 = .175 in. (4.45 mm.)	.200 = .200 in. (5.08 mm.)



Specifications

- **Operating temp.:** -65° to +175°C
- **Impedance:** 100 ohms
- **DWV:** 500 Vrms unmatd
- **Current Rating:** 1.5 A
- **IR:** 1000 MΩ min.
- **Durability:** 2000 mating cycles
- **Ingress protection:** IP67

Construction

- **Shell, jam-nut:** aluminum alloy or SST
- **Insulators:** high-grade rigid dielectric
- **Contacts:** copper alloy, 50 microinches gold over nickel plating
- **O-rings:** fluorosilicone
- **Spline:** copper alloy, electroless nickel plated
- **Potting:** epoxy

Spanner Nut Tightening Tool

Nickel-plated tool steel, ¼" sq. drive
13 - 18 in.-lbs. recommended torque

600-202-E
1.00 (25.4)

El Ochito® White