



882-029 90° PC Tail Panel, Mount Receptacle, Threaded Coupling



100 ohm. Ultraminiature. High performance. PCB terminals.

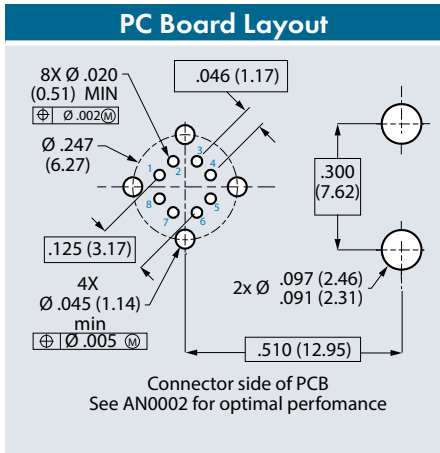
882-029 SuperFly Datalink receptacles have eight socket contacts. Attach to .100" (2.54 mm) maximum thickness panel with spanner nut. PC tail contacts are gold plated or solder dipped in 63/37 tin-lead. Contacts are epoxy-sealed and are non-removable. Gold-plated EMI spring for low shell-to-shell resistance. Fluorosilicone O-rings for water-tight seal. *Mates to 882-025 plug.*

HIGH SPEED

- 5 Gbps per pair
- Low-dielectric insulators

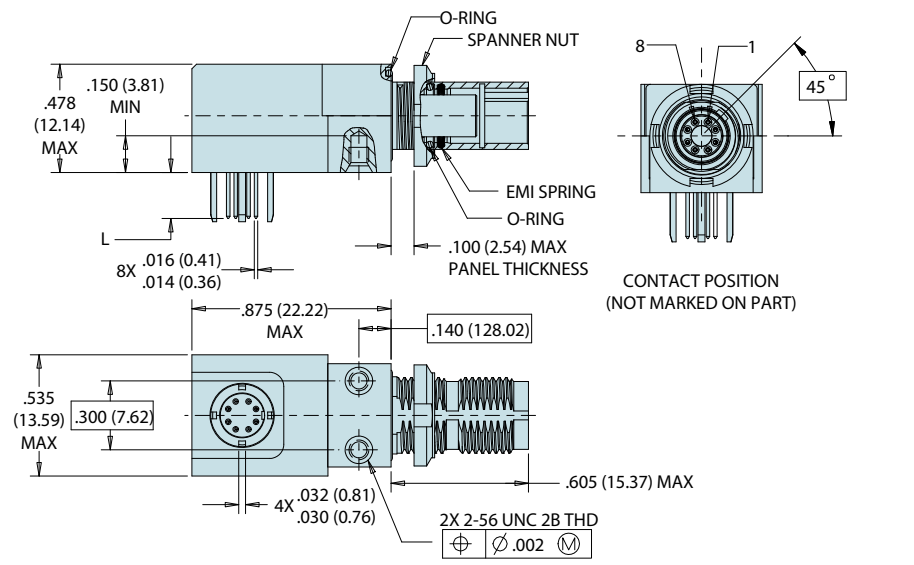
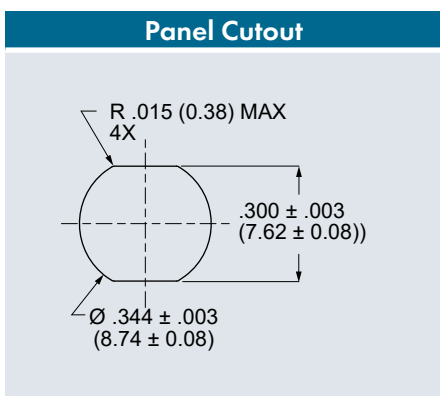
HARSH ENVIRONMENT

- EMI protection
- Water ingress
- Shock and vibration



How To Order Push-Pull Receptacles

Shell Mat/ Finish	Salt Spray Hours	PC Tail Option	
		Gold Plated	Solder Dipped 63/37 Sn/Pb
Aluminum/ Electroless Nickel	48	882-029-MG-.200	882-029-MS-.200
Aluminum/ Nickel-PTFE	500	882-029-MTG-.200	882-029-MTS-.200
Aluminum/ Black Zinc-Nickel	500	882-029-ZRG-.200	882-029-ZRS-.200
Aluminum/ Gold	48	882-029-ZZG-.200	882-029-ZZS-.200
SST/ Nickel-PTFE	500	882-029-ZMTG-.200	882-029-ZMTS-.200



Specifications

- **Operating temp.:** -65° to +175°C
- **Impedance:** 100 ohms
- **DWV:** 100 Vrms unmatd
- **Current Rating:** 1.5 A
- **IR:** 100 MΩ @ 150 Vdc
- **Durability:** 2000 mating cycles
- **Ingress protection:** IP67

Construction

- **Shell, jam-nut:** aluminum alloy or SST
- **Insulators and tray:** low-dielectric material
- **Contacts:** copper alloy, 50 microinches gold over nickel plating
- **O-rings:** fluorosilicone
- **EMI spring:** stainless steel, gold plated
- **Potting:** epoxy

Spanner Nut Tightening Tool

Steel alloy, nickel-plated tool, 1/4" sq. drive
13 - 18 in.-lbs. recommended torque

600-202-E