

882-030 90° PC Tail, Panel Mount Receptacle, Push-Pull QDC Coupling



100 ohm. Ultraminiature. Rear panel mount. PCB terminals.

882-030 SuperFly Datalink PCB receptacles have one El Ochito® octaxial contact housing 8 socket contacts. Attach to .100 (2.54) max thickness panel with spanner nut. PC tail contacts are gold plated or solder dipped in 63/37 tin-lead. Contacts are epoxy-sealed and non-removable. EMI spring for low shell-to-shell resistance. Water-tight O-ring seal. **Mates to 882-023, -031, -034 and -037.**

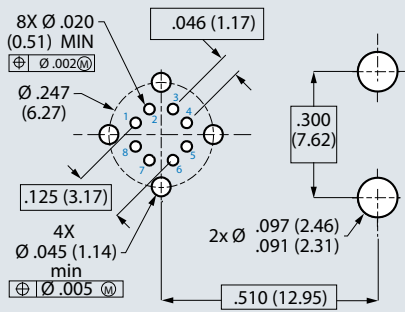
HIGH-SPEED

- 5 Gbps per pair
- Low-dielectric insulators

HARSH ENVIRONMENT

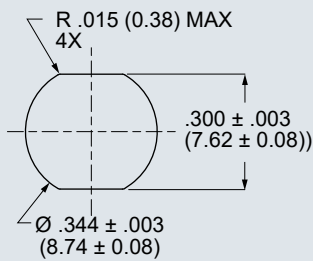
- EMI protection
- Water ingress
- Shock and vibration
- Temperature extremes
- Corrosion resistance

PC Board Layout



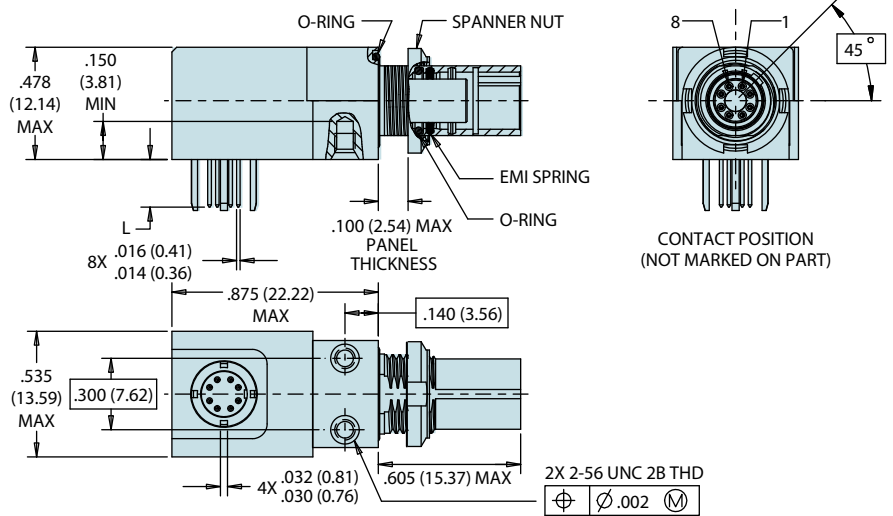
Connector side of PCB
 See AN0002 for optimal performance

Panel Cutout



How To Order Push-Pull Receptacles

Sample Part Number	882-030	-M	G	-.125
Product	882-030 = Right Angle, Panel Mount PC Tail Receptacle			
Shell Finish	M = Electroless Nickel (aluminum shell) MT = Nickel-PTFE (aluminum shell) ZR = Black Zinc-Nickel (aluminum shell) ZZ = Gold (aluminum shell) ZMT = Nickel-PTFE (stainless steel shell)			
PC Tail Finish	S = Solder dip, 63/37 tin-lead G = Gold			
PC Tail Length	.200 = .200 in. (5.08 mm.)			



Specifications

- Operating temp.: -65° to +175°C
- Impedance: 100 ohms
- DWV: 100 Vrms unmatd
- Current Rating: 1.5 A
- IR: 100 M Ω @ 150 Vdc
- Durability: 2000 mating cycles
- Ingress protection: IP67

Construction

- Shell, jam-nut: aluminum alloy or SST
- Insulators: low-dielectric material
- Contacts: copper alloy, 50 microinches gold over nickel plating
- O-rings: fluorosilicone blend
- Potting: epoxy

Spanner Nut Tightening Tool

Nickel-plated tool steel, 1/4" sq. drive
 13 - 18 in.-lbs. recommended torque

