

# 882-027 PC Tail, Panel Mount Receptacle, Push-Pull QDC Coupling



### 100 ohm. Ultraminiature. Rear panel mount. PCB terminals.

882-027 SuperFly Datalink receptacles have one El Ochito® octaxial contact. Attach to .100" (2.54 mm) maximum thickness panel with spanner nut. PC tail contacts are gold plated or solder dipped in 63/37 tin-lead. Contacts are epoxy-sealed and are non-removable. Gold-plated EMI spring for low shell-to-shell resistance. Fluorosilicone O-rings for water-tight seal. *Mates to 882-023, -031, -034, and -037 plug connectors.*

#### SIZE AND WEIGHT SAVING

- .455 inch (10.5 mm.) diameter

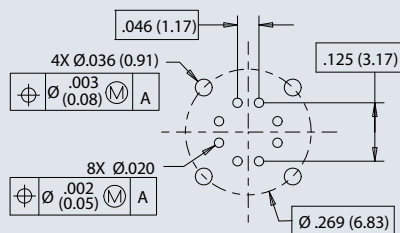
#### HIGH-SPEED

- 10 Gbps per pair
- Low-dielectric insulators

#### HARSH ENVIRONMENT

- EMI protection
- Water ingress
- Shock and vibration

#### Recommended PC Board Layout

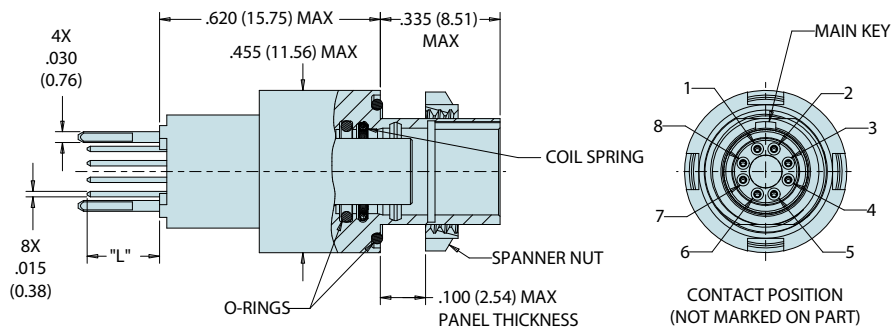
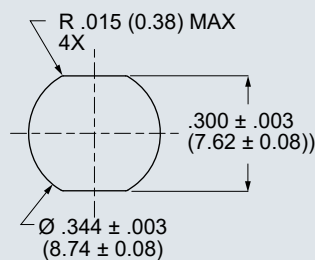


Connector side of PCB  
 See AN0002 for optimal performance  
 (Maintain  $\varnothing.036$  on  $\varnothing.269$  for ground pins)

#### How To Order

Sample Part Number	882-027	-ZR	S	-.080
<b>Product</b>	882-027 = Panel Mount PC Tail Receptacle			
<b>Shell Finish</b>	<b>M</b> = Electroless Nickel (aluminum shell) <b>MT</b> = Nickel-PTFE (aluminum shell) <b>ZR</b> = Black Zinc-Nickel (aluminum shell) <b>ZZ</b> = Gold (aluminum shell) <b>ZMT</b> = Nickel-PTFE (stainless steel shell)			
<b>PC Tail Finish</b>	<b>S</b> = Solder dip, 63/37 tin-lead <b>G</b> = Gold			
<b>PC Tail Length</b>	<b>.080</b> = .080" (2.03 mm.) <b>.175</b> = .175" (4.45 mm.)	<b>.125</b> = .125" (3.18 mm.) <b>.200</b> = .200" (5.08 mm.)		

#### Recommended Panel Cutout



#### Specifications

- **Operating temp.:** -65° to +175°C
- **Impedance:** 100 ohms
- **DWV:** 500 Vrms unmatd
- **Current Rating:** 1.5 A
- **IR:** 1000 M $\Omega$  min.
- **Durability:** 2000 mating cycles
- **Ingress protection:** IP67

#### Construction

- **Shell, jam-nut:** aluminum alloy or SST
- **Insulators:** low-dielectric material
- **Contacts:** copper alloy, 50 microinches gold over nickel plating
- **O-rings:** fluorosilicone
- **EMI spring:** stainless steel, gold plated
- **Potting:** epoxy

#### Spanner Nut Tightening Tool

Nickel-plated tool steel, 1/4" sq. drive  
**13 - 18 in.-lbs. recommended torque**



600-202-E

