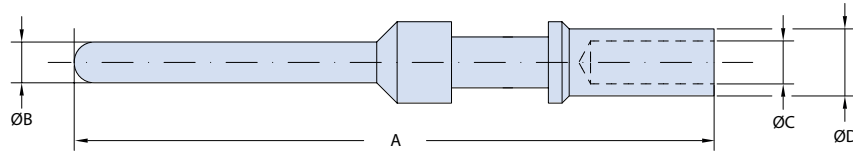




REVERSE-BAYONET QUICK-DISCONNECT ITS-NG™ Nuclear-Grade Containment Area Class 1E Connectors Pin Contact Dimensions, Size 20 thru 12



PIN CRIMP CONTACTS



Pin Crimp Contact Part Numbers, Size & Dimensions

Part number	Contact Size	A		ØB		ØC		ØD		Wire Size	
		mm	Inches	mm	Inches	mm	Inches	mm	Inches	mm ²	AWG
NG10-375-20	20	24.30	0.957	1.00	0.039	1.30	0.051	1.93	0.076	0.15-0.6	26-20
NG10-40579	18	29.60	1.165	1.40	0.055	1.30	0.051	1.93	0.076	0.15-0.6	26-20
NG10-40553	16S	26.60	1.047	1.58	0.062	1.70	0.067	2.60	0.102	1-1.5	18-16
NG10-40553-12	16S	26.60	1.047	1.58	0.062	1.19	0.047	2.59	0.102	0.6	20
NG10-40553-13*	16S	26.60	1.047	1.58	0.062	1.30	0.051	1.93	0.076	0.15-0.6	26-20
NG10-40553-15*	16S	26.60	1.047	1.58	0.062	1.50	0.059	2.60	0.102	0.75-1.0	18
NG10-40553-20	16S	26.60	1.047	1.58	0.062	2.00	0.079	2.90	0.114	2	14
NG10-40553-26	16S	26.60	1.047	1.58	0.062	2.5	0.098	3.8	0.150	2.5-3.0	12
NG10-40557	16	31.75	1.250	1.58	0.062	1.70	0.067	2.60	0.102	1-1.5	18-16
NG10-40557L	16	33.25	1.309	1.58	0.062	1.70	0.067	2.60	0.102	1-1.5	18-16
NG10-40557-08*	16	31.75	1.250	1.58	0.062	0.85	0.033	1.55	0.061	0.15-0.2	26-24
NG10-40557-12*	16	31.75	1.250	1.58	0.062	1.20	0.047	2.60	0.102	0.6	20
NG10-40557-13*	16	31.75	1.250	1.58	0.062	1.30	0.051	1.93	0.076	0.15-0.6	26-20
NG10-40557-15*	16	31.75	1.250	1.58	0.062	1.50	0.059	2.60	0.102	0.75-1.0	18
NG10-40557-20**	16	31.75	1.250	1.58	0.062	2.00	0.079	2.90	0.114	2	14
NG10-40557-22**	16	31.75	1.250	1.57	0.062	2.2	0.087	3.8	0.150	2.5	/
NG10-40557-22L**	16	33.25	1.309	1.57	0.062	2.2	0.087	3.8	0.150	2.5	/
NG10-40557-26**	16	31.75	1.250	1.58	0.062	2.5	0.098	3.8	0.150	2.5-3.0	12
NG10-40557-32*	16	31.75	1.250	1.58	0.062	0.45	0.018	1.95	0.077	/	32-28
NG10-40561	12	37.65	1.482	2.38	0.094	2.50	0.098	3.90	0.154	2.5-3.0	12
NG10-40561-12*	12	37.65	1.482	2.38	0.094	1.20	0.047	2.60	0.102	0.6	20
NG10-40561-15*	12	37.65	1.482	2.38	0.094	1.50	0.059	2.60	0.102	0.75-1.0	18
NG10-40561-177*	12	37.65	1.482	2.38	0.094	1.77	0.070	2.75	0.108	1.5	18-16
NG10-40561-20*	12	37.65	1.482	2.38	0.094	2.00	0.079	3.90	0.154	2	14
NG10-40561-22*	12	37.65	1.482	2.38	0.094	2.10	0.083	3.90	0.154	2.5	/
NG10-40561-30**	12	37.65	1.482	2.38	0.094	3.00	0.118	4.80	0.189	4-5	/
NG10-40561-30M**	12	37.65	1.482	2.38	0.094	3.30	0.130	4.20	0.165	4	/
NG10-40561-38**	12	37.65	1.482	2.38	0.094	3.60	0.142	4.8	0.268	6	10

Please consult our sales department for other contacts or crimp tool details.

Plating Options	
G117	Gold

NOTES

*These contacts accept smaller wire than standard ones. There may be a sealing problem with grommets. The max current rating is limited by the wire max current rating. See Appendix for details.

** These contacts accept larger wires. The reduced air/creepage resistance may worsen the service rating and there may be difficulties with grommets. The max current rating is limited by the contact max current rating. See Appendix for details.

SUPER ITS: HARSH ENVIRONMENT

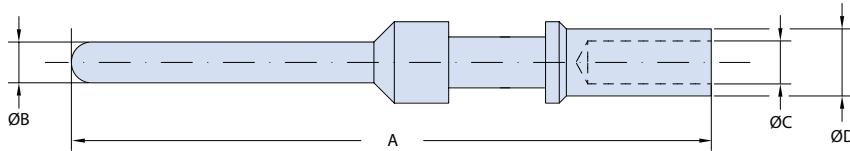
A



REVERSE-BAYONET QUICK-DISCONNECT ITS-NG™ Nuclear-Grade Containment Area Class 1E Connectors Pin Contact Dimensions, Size 8 thru 4/0



PIN CRIMP CONTACTS



Pin Crimp Contact Part Numbers, Size & Dimensions

Part number	Contact Size	A		ØB		ØC		ØD		Wire Size	
		mm	Inches	mm	Inches	mm	Inches	mm	Inches	mm ²	AWG
NG 10-40792	8	42.00	1.654	3.60	0.142	4.50	0.177	6.90	0.272	9	8
NG 10-40792-15*	8	42.00	1.654	3.60	0.142	1.50	0.059	3.40	0.134	0.75-1.0	18
NG 10-40792-18*	8	42.00	1.654	3.60	0.142	1.80	0.071	3.80	0.150	1-2	18-14
NG 10-40792-20*	8	42.00	1.654	3.60	0.142	2.00	0.079	3.80	0.150	2	14
NG 10-40792-26*	8	42.00	1.654	3.60	0.142	2.5	0.098	3.8	0.150	2.5-3.0	12
NG 10-40792-30*	8	42.00	1.654	3.60	0.142	3.00	0.118	4.80	0.189	4-5	/
NG 10-40792-38*	8	42.00	1.654	3.60	0.142	3.60	0.142	6.80	0.268	6	10
NG 10-40792-50**	8	42.00	1.654	3.60	0.142	5.00	0.197	6.90	0.272	10	/
NG 10-40792-58**	8	42.00	1.654	3.60	0.142	5.80	0.228	7.80	0.307	13.2	6
NG 10-113474-4P	4	42.00	1.654	5.70	0.224	7.10	0.280	9.53	0.375	22-25	4
NG 10-113474-4P-22*	4	42.00	1.654	5.70	0.224	2.20	0.087	3.80	0.150	2.5	/
NG 10-113474-4P-26*	4	42.00	1.654	5.70	0.224	2.50	0.098	3.80	0.150	2.5-3.0	12
NG 10-113474-4P-30*	4	42.00	1.654	5.70	0.224	3.00	0.118	4.80	0.189	4-5	/
NG 10-113474-4P-38*	4	42.00	1.654	5.70	0.224	3.60	0.142	6.80	0.268	6	10
NG 10-113474-4P-50*	4	42.00	1.654	5.70	0.224	5.00	0.197	7.00	0.276	10	/
NG 10-113474-4P-58*	4	42.00	1.654	5.70	0.224	5.80	0.228	7.80	0.307	13.2	6
NG 10-113474-4P-62*	4	42.00	1.654	5.70	0.224	6.20	0.244	9.53	0.375	16	/
NG 10-113474-1P	0	45.00	1.772	9.05	0.356	11.50	0.453	14.30	0.563	50-60	0
NG 10-113474-1P-107*	0	45.00	1.772	9.05	0.356	10.70	0.421	14.35	0.565	50	/
NG 10-113474-1P-72*	0	45.00	1.772	9.05	0.356	7.15	0.281	9.50	0.374	22-25	4
NG 10-113474-1P-35*	0	45.00	1.772	9.05	0.356	9.00	0.354	14.35	0.565	35	/
NG 10-113474-1P-45*	0	45.00	1.772	9.05	0.356	4.55	0.179	6.80	0.268	9	8
NG 10-113474-1P-50*	0	45.00	1.772	9.05	0.356	5.00	0.197	7.00	0.276	10	/
NG 10-113474-1P-58*	0	45.00	1.772	9.05	0.356	5.80	0.228	7.80	0.307	13.2	6
NG 10-113474-1P-62*	0	45.00	1.772	9.05	0.356	6.20	0.244	9.50	0.374	16	/
NG 10-113474-0P*	4/0	63.00	2.480	12.69	0.500	16.5	0.650	20	0.787	107	4/0
NG 10-113474-0P-78*	4/0	63.00	2.480	12.69	0.500	7.10	0.280	9.53	0.375	22-25	4
NG 10-113474-0P-107*	4/0	63.00	2.480	12.69	0.500	10.7	0.421	14.35	0.565	50	/
NG 10-113474-0P-144*	4/0	63.00	2.480	12.69	0.500	14.5	0.571	20	0.787	70	/

Please consult our sales department for other contacts or crimp tooling details.

Plating Options

G117	Gold
------	------

NOTES

*These contacts accept smaller wire than standard ones. There may be a sealing problem with grommets. The max current rating is limited by the wire max current rating.

** These contacts accept larger wires. The reduced air/creePage Aistance may worsen the service rating and there may be difficulties with grommets. The max current rating is limited by the contact max current rating. See Page A-3.

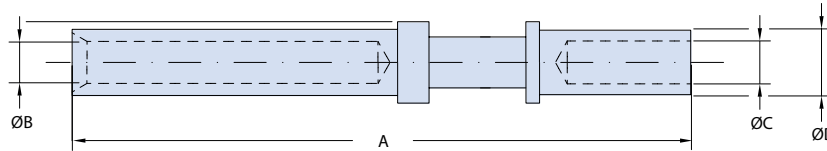


REVERSE-BAYONET QUICK-DISCONNECT ITS-NG™ Nuclear-Grade Containment Area Class 1E Connectors



Socket Contact Dimensions, Size 20 thru 12

SOCKET CRIMP CONTACTS



Socket Crimp Contact Part Numbers, Size & Dimensions

Part number	Contact Size	A	ØB	ØC	ØD	Wire Size	
						mm ²	AWG
NG10-40520LC	20	36.5 (1.44)	1.08 (0.04)	1.3 (0.05)	1.93 (0.08)	0.15-0.6	26-20
NG10-40588	18	34.4 (1.35)	1.46 (0.06)	1.3 (0.05)	1.93 (0.08)	0.15-0.6	26-20
NG10-40552	16S	26.6 (1.05)	1.65 (0.06)	1.7 (0.07)	2.60 (0.10)	1-1.5	18-16
NG10-40552-12*	16S	26.6 (1.05)	1.65 (0.06)	1.2 (0.05)	2.60 (0.10)	0.6	20
NG10-40552-13*	16S	26.6 (1.05)	1.65 (0.06)	1.3 (0.05)	1.93 (0.08)	0.15-0.6	26-20
NG10-40552-15*	16S	26.6 (1.05)	1.65 (0.06)	1.5 (0.06)	2.60 (0.10)	0.75-1	18
NG10-40552-20**	16S	26.6 (1.05)	1.65 (0.06)	2.0 (0.08)	2.90 (0.11)	2	14
NG10-40552-26**	16S	26.6 (1.05)	1.65 (0.06)	2.5 (0.10)	3.80 (0.15)	2.5-3.0	12
NG10-40556	16	36.5 (1.44)	1.65 (0.06)	1.7 (0.07)	2.60 (0.10)	1-1.5	18-16
NG10-40556-08*	16	36.5 (1.44)	1.65 (0.06)	0.85 (0.03)	1.55 (0.06)	0.15-0.2	26-24
NG10-40556-12*	16	36.5 (1.44)	1.65 (0.06)	1.2 (0.05)	2.60 (0.10)	0.6	20
NG10-40556-13*	16	36.5 (1.44)	1.65 (0.06)	1.3 (0.05)	1.93 (0.08)	0.15-0.6	26-20
NG10-40556-15*	16	36.5 (1.44)	1.65 (0.06)	1.45 (0.06)	2.60 (0.10)	0.75-1	18
NG10-40556-20**	16	36.5 (1.44)	1.65 (0.06)	2.0 (0.08)	2.90 (0.11)	2	14
NG10-40556-22**	16	36.5 (1.44)	1.65 (0.06)	2.2 (0.09)	3.8 (0.15)	2.5	/
NG10-40556-26**	16	36.5 (1.44)	1.65 (0.06)	2.5 (0.10)	3.80 (0.15)	2.5-3.0	12
NG10-40556-32*	16	36.5 (1.44)	1.65 (0.06)	0.45 (0.02)	1.95 (0.08)	/	32-28
NG10-40560	12	37.65 (1.48)	2.48 (0.10)	2.5 (0.10)	3.9 (0.15)	2.5-3.0	12
NG10-40560-12*	12	37.65 (1.48)	2.48 (0.10)	1.2 (0.05)	2.6 (0.10)	0.6	20
NG10-40560-15*	12	37.65 (1.48)	2.48 (0.10)	1.45 (0.06)	2.60 (0.10)	0.75-1	18
NG10-40560-177*	12	37.65 (1.48)	2.48 (0.10)	1.77 (0.07)	2.75 (0.11)	1.5	18-16
NG10-40560-20*	12	37.65 (1.48)	2.48 (0.10)	2.0 (0.08)	3.8 (0.15)	2	14
NG10-40560-22*	12	37.65 (1.48)	2.48 (0.10)	2.1 (0.08)	3.8 (0.15)	2.5	/
NG10-40560-30**	12	37.65 (1.48)	2.48 (0.10)	3.00 (0.12)	4.80 (0.19)	4-5	/
NG10-40560-30M**	12	37.65 (1.48)	2.48 (0.10)	3.30 (0.13)	4.20 (0.17)	4	/
NG10-40560-38**	12	37.65 (1.48)	2.48 (0.10)	3.60 (0.14)	4.80 (0.19)	6	10

Please consult our sales department for other contacts or crimp tooling details.

Plating Options	
G117	Gold

NOTES

*These contacts accept smaller wire than standard ones. There may be a sealing problem with grommets. The max current rating is limited by the wire max current rating.

** These contacts accept larger wires. The reduced air/creePage Aistance may worsen the service rating and there may be difficulties with grommets. The max current rating is limited by the contact max current rating. See Page A-3.

SUPER ITS: HARSH ENVIRONMENT

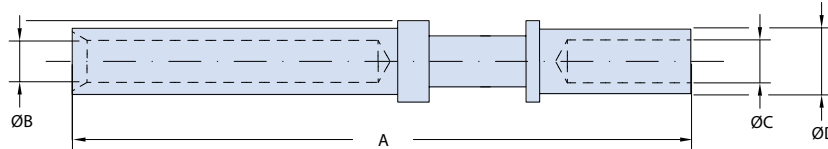
A



REVERSE-BAYONET QUICK-DISCONNECT ITS-NG™ Nuclear-Grade Containment Area Class 1E Connectors Socket Contact Dimensions, Size 8 thru 4/0



SOCKET CRIMP CONTACTS



Socket Crimp Contact Part Numbers, Size & Dimensions

Part number	Contact Size	A	ØB	ØC	ØD	Wire Size	
						mm ²	AWG
NG10-40793-1	8	40.49 (1.59)	3.71 (0.15)	4.50 (0.18)	6.76 (0.27)	9	8
NG10-40793-1-15*	8	40.49 (1.59)	3.71 (0.15)	1.45 (0.06)	3.40 (0.13)	0.75-1	18
NG10-40793-1-18*	8	40.49 (1.59)	3.71 (0.15)	1.80 (0.07)	3.81 (0.15)	1-2	18-14
NG10-40793-1-20*	8	40.49 (1.59)	3.61 (0.14)	2.01 (0.08)	3.81 (0.15)	2	14
NG10-40793-1-26*	8	40.49 (1.59)	3.71 (0.15)	2.49 (0.10)	3.81 (0.15)	2.5-3.0	12
NG10-40793-1-30*	8	40.49 (1.59)	3.71 (0.15)	3.00 (0.12)	4.80 (0.19)	4-5	/
NG10-40793-1-38*	8	40.49 (1.59)	3.71 (0.15)	3.61 (0.14)	6.81 (0.27)	6	10
NG10-40793-1-50**	8	40.49 (1.59)	3.71 (0.15)	5.00 (0.20)	6.91 (0.27)	10	/
NG10-40793-1-58**	8	40.49 (1.59)	3.71 (0.15)	5.79 (0.23)	7.80 (0.31)	13.2	6
NG10-113474-4S-1	4	41.00 (1.61)	5.79 (0.23)	7.11 (0.28)	9.52 (0.37)	22-25	4
NG10-113474-4S-1-22*	4	41.00 (1.61)	5.79 (0.23)	2.21 (0.09)	3.81 (0.15)	2.5	/
NG10-113474-4S-1-26*	4	41.00 (1.61)	5.79 (0.23)	2.49 (0.10)	3.81 (0.15)	2.5-3.0	12
NG10-113474-4S-1-30*	4	41.00 (1.61)	5.79 (0.23)	3.00 (0.12)	4.80 (0.19)	4-5	/
NG10-113474-4S-1-38*	4	41.00 (1.61)	5.79 (0.23)	3.61 (0.14)	6.81 (0.27)	6	10
NG10-113474-4S-1-50*	4	41.00 (1.61)	5.79 (0.23)	5.00 (0.20)	7.01 (0.28)	10	/
NG10-113474-4S-1-58*	4	41.00 (1.61)	5.79 (0.23)	5.79 (0.23)	7.80 (0.31)	13.2	6
NG10-113474-4S-1-62*	4	41.00 (1.61)	5.79 (0.23)	6.20 (0.24)	9.50 (0.37)	16	/
NG10-113474-1S	0	44.60 (1.76)	9.17 (0.36)	11.51 (0.45)	14.30 (0.56)	50-60	0
NG10-113474-1S-107*	0	44.60 (1.76)	9.17 (0.36)	10.69 (0.42)	14.35 (0.56)	50	/
NG10-113474-1S-72*	0	44.60 (1.76)	9.17 (0.36)	7.14 (0.28)	9.50 (0.37)	22-25	4
NG10-113474-1S-35*	0	44.60 (1.76)	9.17 (0.36)	8.99 (0.35)	14.35 (0.56)	35	/
NG10-113474-1S-45*	0	44.60 (1.76)	9.17 (0.36)	4.55 (0.18)	6.81 (0.27)	9	8
NG10-113474-1S-50*	0	44.60 (1.76)	9.17 (0.36)	5.00 (0.20)	7.01 (0.28)	10	/
NG10-113474-1S-58*	0	44.60 (1.76)	9.17 (0.36)	5.79 (0.23)	7.80 (0.31)	13.2	6
NG10-113474-1S-62*	0	45.29 (1.78)	9.17 (0.36)	6.20 (0.24)	9.50 (0.37)	16	/
NG10-113474-0S	4/0	65.89 (2.59)	12.70 (0.50)	16.51 (0.65)	19.99 (0.79)	107	4/0
NG10-113474-0S-78*	4/0	65.89 (2.59)	12.70 (0.50)	7.14 (0.28)	9.50 (0.37)	22-25	4
NG10-113474-0S-107*	4/0	65.89 (2.59)	12.70 (0.50)	10.69 (0.42)	14.35 (0.56)	50	/
NG10-113474-0S-144*	4/0	65.89 (2.59)	12.70 (0.50)	14.50 (0.57)	19.99 (0.79)	70	/

Please consult our sales department for other contacts or crimp tooling details.

Plating Options

G117	Gold
------	------

NOTES

*These contacts accept smaller wire than standard ones. There may be a sealing problems with grommets. The max current rating is limited by the wire max current rating.

** These contacts accept larger wires. The reduced air/creePage Aistance may worsen the service rating and there may be difficulties with grommets. The max current rating is limited by the contact max current rating. See Page A-3.

SUPER ITS: HARSH ENVIRONMENT

A



REVERSE-BAYONET QUICK-DISCONNECT ITS-NG™ Nuclear-Grade Containment Area Class 1E Connectors Manual and Pneumatic Pin Crimp Tools



PIN CRIMP CONTACTS - MANUAL AND PNEUMATIC TOOLS

Manual And Pneumatic Tools Part Numbers, Size & Dimensions							
Part Number	Contact Size	WIRE SIZE		MANUAL CRIMP TOOL		PNEUMATIC TOOL TYPE "A"	
		mm ²	AWG	MANUAL TOOL	TURRET	PNEUMATIC TOOL	TURRET
NG10-375-20	20	0,15-0,6	26÷20	M.105001	M.105026	M.105003	M.105026
NG 10-40579	18	0,15÷0,6	26÷20	M.105001	M.105025	M.105003	M.105025
NG 10-40553	16S	1÷1,5	18÷16	M.105007	M.105009	M.105002	M.105009
NG 10-40553-12	16S	0,6	20	M.105007	M.105009	M.105002	M.105009
NG 10-40553-13	16S	0,15÷0,6	26÷20	M.105001	M.105009	M.105003	M.105009
NG 10-40553-15	16S	0,75-1,0	18	M.105007	M.105009	M.105002	M.105009
NG 10-40553-20	16S	1-2	14	M.105007	M.105009	M.105002	M.105009
NG 10-40553-26	16S	2,5-3,0	12	M.105007	M.105009	M.105002	M.105009
NG 10-40557	16	1÷1,5	18÷16	M.105007	M.105009	M.105002	M.105012
NG 10-40557L	16	1÷1,5	18÷16	M.105007	M.105012	M.105002	M.105009
NG 10-40557-08	16	0,15÷0,2	26÷24	M.105001	M.105009	M.105003	M.105009
NG 10-40557-12	16	0,6	20	M.105007	M.105009	M.105003	M.105009
NG 10-40557-13	16	0,15÷0,6	26÷20	M.105001	M.105009	M.105003	M.105009
NG 10-40557-15	16	0,75-1,0	18	M.105007	M.105009	M.105002	M.105009
NG 10-40557-20	16	1-2	14	M.105007	M.105009	M.105002	M.105009
NG 10-40557-22	16	2,5	/	M.105007	M.105009	M.105002	M.105009
NG 10-40557-22L	16	2,5	/	M.105007	M.105012	M.105002	M.105012
NG 10-40557-26	16	2,5-3,0	12	M.105007	M.105009	M.105002	M.105009
NG 10-40557-32	16	/	32÷28	M.105007	M.105009	M.105003	M.105009
NG 10-40561	12	2,5-3,0	12	M.105007	M.105009	M.105002	M.105009
NG 10-40561-12	12	0,6	20	M.105007	M.105009	M.105003	M.105009
NG 10-40561-15	12	0,75-1,0	18	M.105007	M.105009	M.105002	M.105009
NG 10-40561-177	12	1,5	18-16	M.105007	M.105009	M.105002	M.105009
NG 10-40561-20	12	2	14	M.105007	M.105009	M.105002	M.105009
NG 10-40561-22	12	2,5	/	M.105007	M.105009	M.105002	M.105009
NG 10-40561-30	12	4-5	/	M.105007	M.105009	M.105002	M.105009
NG 10-40561-30M	12	4	/	M.105007	M.105009	M.105002	M.105009
NG 10-40561-38	12	6	10	M.105007	M.105009	M.105002	M.105009

Please consult our sales department for other contacts or crimp tooling details.



Manual Crimp Tool



Manual Crimp Tool Turret



Pneumatic Crimp Tool Type A



Pneumatic Crimp Tool Type A Turret

SUPER ITS: HARSH ENVIRONMENT

A



REVERSE-BAYONET QUICK-DISCONNECT ITS-NG™ Nuclear-Grade Containment Area Class 1E Connectors Manual and Pneumatic Pin Crimp Tools

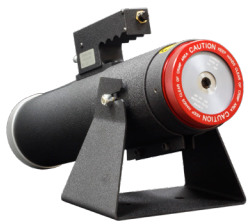


PIN CRIMP CONTACTS - MANUAL AND PNEUMATIC TOOLS

Manual And Pneumatic Tools Part Numbers, Size & Dimensions										
Part Number	Contact Size	WIRE SIZE		MANUAL CRIMP TOOL		PNEUMATIC TOOL TYPE "B"			OLEODINAMIC TOOL	
		mm ²	AWG	MANUAL TOOL	TURRET	PNEUMATIC TOOL	DIE	LOCATOR	OLEODINAMIC TOOL	DIE
NG 10-40792	8	9	8	/	/	M.112000	M.112001	M.112309	M.112004	M.112005
NG 10-40792-15	8	0,75-1,0	18	M.105028	M.104002	/	/	/	/	/
NG 10-40792-18	8	1÷2	18÷14	M.105028	M.104002	/	/	/	/	/
NG 10-40792-20	8	2	14	M.105028	M.104002	/	/	/	/	/
NG 10-40792-26	8	2,5-3,0	12	M.105028	M.104002	/	/	/	/	/
NG 10-40792-30	8	4-5	/	M.105028	M.104002	/	/	/	M.112004	M.112008
NG 10-40792-38	8	6	10	/	/	M.112000	M.112001	M.112309-1	M.112004	M.112005
NG 10-40792-50	8	10	/	/	/	M.112000	M.112001	M.112309-1	M.112004	M.112005
NG 10-40792-58	8	13,2	6	/	/	M.112000	M.112001	M.112309-1	M.112004	M.112005
NG 10-113474-4P	4	25	4	/	/	M.112000	M.112002	M.112311	M.112004	M.112006
NG 10-113474-4P-22	4	2,5	/	/	/	/	/	/	M.112004	M.112009
NG 10-113474-4P-26	4	2,5-3,0	12	/	/	/	/	/	M.112004	M.112009
NG 10-113474-4P-30	4	4-5	/	/	/	/	/	/	M.112004	M.112008
NG 10-113474-4P-38	4	6	10	/	/	M.112000	M.112001	M.112311	M.112004	M.112005
NG 10-113474-4P-50	4	10	/	/	/	M.112000	M.112001	M.112311	M.112004	M.112005
NG 10-113474-4P-58	4	13,2	6	/	/	M.112000	M.112001	M.112311	M.112004	M.112005
NG 10-113474-4P-62	4	16	/	/	/	M.112000	M.112002	M.112311	M.112004	M.112006
NG 10-113474-1P	0	50-60	0	/	/	M.112000	M.112003	M.112313	M.112004	M.112010
NG 10-113474-1P-107	0	50	/	/	/	M.112000	M.112003	M.112313	M.112004	M.112010
NG 10-113474-1P-72	0	22-25	4	/	/				M.112004	M.112006
NG 10-113474-1P-35	0	35	/	/	/	/	/	/	M.112004	M.112007
NG 10-113474-1P-45	0	9	8	/	/				M.112004	M.112005
NG 10-113474-1P-50	0	10	/	/	/				M.112004	M.112005
NG 10-113474-1P-58	0	13,2	6	/	/				M.112004	M.112005
NG 10-113474-1P-62	0	16	/	/	/				M.112004	M.112006
NG 10-113474-0P	4/0	107	4/0	/	/	/	/	/	M.105013	M.112012
NG 10-113474-0P-78	4/0	25	/	/	/	/	/	/	M.112004	M.112006
NG 10-113474-0P-107	4/0	50	/	/	/	/	/	/	M.112004	M.112010
NG 10-113474-0P-144	4/0	70	/	/	/	/	/	/	M.105013	M.105053

Please consult our sales department for other contacts or crimp tooling details.

SUPER ITS: HARSH ENVIRONMENT



Pneumatic Crimp Tool Type "B"



Die for Pneumatic Crimp Tool Type "B"



Locator for Pneumatic Crimp Tool Type "B"



Oleodinamic Crimp Tool



Oleodinamic Crimp Tool Die



REVERSE-BAYONET QUICK-DISCONNECT ITS-NG™ Nuclear-Grade Containment Area Class 1E Connectors Socket Crimp Contacts and Crimp Tools



SOCKET CRIMP CONTACTS - MANUAL AND PNEUMATIC TOOLS

Manual And Pneumatic Tools Part Numbers, Size & Dimensions							
Part Number	Contact Size	Wire Size		Manual Crimp Tool		Pneumatic Tool Type "A"	
		mm ²	AWG	Manual Tool	Turret	Pneumatic Tool	Turret
NG 10-40520LC	20	0.15-0.6	26-20	M.105001	M.105026	M.105003	M.105026
NG 10-40588	18	0.15-0.6	26-20	M.105001	M.105025	M.105003	M.105025
NG 10-40552	16S	1-1.5	18-16	M.105007	M.105009	M.105002	M.105009
NG 10-40552-12	16S	0.6	20	M.105007	M.105009	M.105002	M.105009
NG 10-40552-13	16S	0.15-0.6	26-20	M.105001	M.105009	M.105003	M.105009
NG 10-40552-15	16S	0.75-1	18	M.105007	M.105009	M.105002	M.105009
NG 10-40552-20	16S	1-2	14	M.105007	M.105009	M.105002	M.105009
NG 10-40552-26	16S	2.5-3.0	12	M.105007	M.105009	M.105002	M.105009
NG 10-40556	16	1-1.5	18-16	M.105007	M.105009	M.105002	M.105009
NG 10-40556-08	16	0.15-0.2	26-24	M.105001	M.105009	M.105003	M.105009
NG 10-40556-12	16	0.6	20	M.105007	M.105009	M.105003	M.105009
NG 10-40556-13	16	0.15-0.6	26-20	M.105001	M.105009	M.105003	M.105009
NG 10-40556-15	16	0.75-1	18	M.105007	M.105009	M.105002	M.105009
NG 10-40556-20	16	1-2	14	M.105007	M.105009	M.105002	M.105009
NG 10-40556-22	16	2.5	/	M.105007	M.105009	M.105002	M.105009
NG 10-40556-26	16	2.5-3.0	12	M.105007	M.105009	M.105002	M.105009
NG 10-40556-32	16	/	32-28	M.105007	M.105009	M.105003	M.105009
NG 10-40560	12	2.5-3.0	12	M.105007	M.105009	M.105002	M.105009
NG 10-40560-12	12	0.6	20	M.105007	M.105009	M.105003	M.105009
NG 10-40560-15	12	0.75-1	18	M.105007	M.105009	M.105002	M.105009
NG 10-40560-177	12	1.5	18-16	M.105007	M.105009	M.105002	M.105009
NG 10-40560-20	12	2	14	M.105007	M.105009	M.105002	M.105009
NG 10-40560-22	12	2.5	/	M.105007	M.105009	M.105002	M.105009
NG 10-40560-30	12	4-5	/	M.105007	M.105009	M.105002	M.105009
NG 10-40560-30M	12	4	/	M.105007	M.105009	M.105002	M.105009
NG 10-40560-38	12	6	10	M.105007	M.105009	M.105002	M.105009

Please consult our sales department for other contacts or crimp tooling details.



Manual Crimp Tool



Manual Crimp Tool Turret



Pneumatic Crimp Tool Type A



Pneumatic Crimp Tool Type A Turret

SUPER ITS: HARSH ENVIRONMENT

A



REVERSE-BAYONET QUICK-DISCONNECT ITS-NG™ Nuclear-Grade Containment Area Class 1E Connectors Socket Crimp Contacts and Crimp Tools



SOCKET CRIMP CONTACTS - MANUAL AND PNEUMATIC TOOLS

Manual and Pneumatic Tools Part Numbers, Size & Dimensions										
Part Number	Contact Size	Wire Size		Manual Crimp Tool		Pneumatic Tool Type "B"			Oleodynamic Tool	
		mm	AWG	Tool	Turret	Tool	Die	Locator	Tool	Die
NG 10-40793-1	8	9	8	/	/	M.112000	M.112001	M.112309	M.112004	M.112005
NG 10-40793-1-15	8	0.75-1	18	M.105028	M.104002	/	/	/	/	/
NG 10-40793-1-18	8	1-2	18-14	M.105028	M.104002	/	/	/	/	/
NG 10-40793-1-20	8	2	14	M.105028	M.104002	/	/	/	/	/
NG 10-40793-1-26	8	2.5-3.0	12	M.105028	M.104002	/	/	/	/	/
NG 10-40793-1-30	8	4-5	/	M.105028	M.104002	/	/	/	M.112004	M.112008
NG 10-40793-1-38	8	6	10	/	/	M.112000	M.112001	M.112309	M.112004	M.112005
NG 10-40793-1-50	8	10	/	/	/	M.112000	M.112001	M.112309	M.112004	M.112005
NG 10-10793-1-58	8	13.2	6	/	/	M.112000	M.112001	M.112309	M.112004	M.112005
NG 10-113474-4S-1	4	25	4	/	/	M.112000	M.112002	M.112311	M.112004	M.112006
NG 10-113474-4S-1-22	4	2.5	/	/	/	/	/	/	M.112004	M.112009
NG 10-113474-4S-1-26	4	2.5-3.0	12	/	/	/	/	/	M.112004	M.112009
NG 10-113474-4S-1-30	4	4-5	/	/	/	/	/	/	M.112004	M.112008
NG 10-113474-4S-1-38	4	6	10	/	/	M.112000	M.112001	M.112311	M.112004	M.112005
NG 10-113474-4S-1-50	4	10	/	/	/	M.112000	M.112001	M.112311	M.112004	M.112005
NG 10-113474-4S-1-58	4	13.2	6	/	/	M.112000	M.112001	M.112311	M.112004	M.112005
NG 10-113474-4S-62	4	16	/	/	/	M.112000	M.112002	M.112311	M.112004	M.112006
NG 10-113474-1S	0	50-60	0	/	/	M.112000	M.112003	M.112313	M.112004	M.112010
NG 10-113474-1S-107	0	50	/	/	/	M.112000	M.112003	M.112313	M.112004	M.112010
NG 10-113474-1S-72	0	22-25	4	/	/	M.112000	M.112002	M.112313	M.112004	M.112006
NG 10-113474-1S-35	0	35	/	/	/	/	/	/	M.112004	M.112007
NG 10-113474-1S-45	0	9	8	/	/				M.112004	M.112005
NG 10-113474-1S-50	0	10	/	/	/				M.112004	M.112005
NG 10-113474-1S-58	0	13.2	6	/	/				M.112004	M.112005
NG 10-113474-1S-62	0	16	/	/	/				M.112004	M.112006
NG 10-113474-0S	4/0	107	4/0	/	/	/	/	/	M.105013	M.112012
NG 10-113474-0S-78	4/0	25	/	/	/	/	/	/	M.112004	M.112006
NG 10-113474-0S-107	4/0	50	/	/	/	/	/	/	M.112004	M.112010
NG 10-113474-0S-144	4/0	70	/	/	/	/	/	/	M.105013	M.105053

Please consult our sales department for other contacts or crimp tooling details.

SUPER ITS: HARSH ENVIRONMENT



Pneumatic Crimp Tool Type "B"



Die for Pneumatic Crimp Tool Type "B"



Locator for Pneumatic Crimp Tool Type "B"



Oleodynamic Crimp Tool



Oleodynamic Crimp Tool Die

A



REVERSE-BAYONET QUICK-DISCONNECT ITS-NG™ Nuclear-Grade Containment Area Class 1E Connectors Pin Contact Insertion and Removal Tools



PIN CRIMP CONTACT - INSERTION AND REMOVAL TOOLS

Insertion and Removal Tools					
Part Number	Contact Size	Wire Size	Insertion Tool	Removal Tool	
NG 10-375-20	20	0.15-0.6	26-20	M.117346	M.118251
NG 10-40579	18	0.15-0.6	26-20	M.117346	M.118249
NG 10-40553	16S	1-1.5	18-16	M.117083	M.118250
NG 10-40553-12	16S	0.6	20	M.117083	M.118250
NG 10-40553-13	16S	0.15-0.6	26-20	M.117346	M.118250
NG 10-40553-15	16S	0.75-1.0	18	M.117083	M.118250
NG 10-40553-20	16S	1-2	14	M.117083	M.118250
NG 10-40553-26	16S	2.5-3.0	12	M.117082	M.118250
NG 10-40557	16	1-1.5	18-16	M.117083	M.118250
NG 10-40557L	16	1-1.5	18-16	M.117083	M.118250
NG 10-40557-08	16	0.15-0.2	26-24	M.117346	M.118250
NG 10-40557-12	16	0.6	20	M.117083	M.118250
NG 10-40557-13	16	0.15-0.6	26-20	M.117346	M.118250
NG 10-40557-15	16	0.75-1.0	18	M.117083	M.118250
NG 10-40557-20	16	1-2	14	M.117083	M.118250
NG 10-40557-22	16	2.5	/	M.117083	M.118250
NG 10-40557-22L	16	2.5	/	M.117083	M.118250
NG 10-40557-26	16	2.5-3.0	12	M.117083	M.118250
NG 10-40557-32	16	/	32-28	M.117083	M.118250
NG 10-40561	12	2.5-3.0	12	M.117082	M.118250
NG 10-40561-12	12	0.6	20	M.117083	M.118250
NG 10-40561-15	12	0.75-1.0	18	M.117083	M.118250
NG 10-40561-177	12	1.5	18-16	M.117082	M.118250
NG 10-40561-20	12	2	14	M.117082	M.118250
NG 10-40561-22	12	2.5	/	M.117082	M.118250
NG 10-40561-30	12	4-5	/	M.117082	M.118250
NG 10-40561-30M	12	4	/	M.117082	M.118250
NG 10-40561-38	12	6	10	M.117082	M.118250

Insertion and Removal Tools					
Part Number	Contact Size	Wire Size	Insertion Tool	Removal Tool	
NG 10-40792	8	9	8	M.117344	M.118260
NG 10-40792-15	8	0.75-1.0	18	M.117082	M.118260
NG 10-40792-18	8	1-2	18-14	M.117082	M.118260
NG 10-40792-20	8	2	14	M.117082	M.118260
NG 10-40792-26	8	2.5-3.0	12	M.117082	M.118260
NG 10-40792-30	8	4-5	/	M.117082	M.118260
NG 10-40792-38	8	6	10	M.117344	M.118260
NG 10-40792-50	8	10	/	M.117344	M.118260
NG 10-40792-58	8	13.2	6	M.117344	M.118260
NG 10-113474-4P	4	25	4	M.117347	M.118270
NG 10-113474-4P-22	4	2.5	/	M.117082	M.118270
NG 10-113474-4P-26	4	2.5-3.0	12	M.117082	M.118270
NG 10-113474-4P-30	4	4-5	/	M.117082	M.118270
NG 10-113474-4P-38	4	6	10	M.117344	M.118270
NG 10-113474-4P-50	4	10	/	M.117344	M.118270
NG 10-113474-4P-58	4	13.2	6	M.117344	M.118270
NG 10-113474-4P-62	4	16	/	M.117347	M.118270
NG 10-113474-1P	0	50-60	0	M.117348	M.118280
NG 10-113474-1P-107	0	50	/	M.117348	M.118280
NG 10-113474-1P-72	0	22-25	4	M.117347	M.118280
NG 10-113474-1P-35	0	35	/	M.117348	M.118280
NG 10-113474-1P-45	0	9	8	M.117344	M.118280
NG 10-113474-1P-50	0	10	/	M.117344	M.118280
NG 10-113474-1P-58	0	13.2	6	M.117344	M.118280
NG 10-113474-1P-62	0	16	/	M.117347	M.118280
NG 10-113474-0P	4/0	107	4/0	/	/
NG 10-113474-0P-78	4/0	25	/	/	/
NG 10-113474-0P-107	4/0	50	/	/	/
NG 10-113474-0P-144	4/0	70	/	/	/

Please consult our sales department for other contacts or crimp tooling details.



Insertion Tool

Removal Tool

SUPER ITS: HARSH ENVIRONMENT

A



REVERSE-BAYONET QUICK-DISCONNECT ITS-NG™ Nuclear-Grade Containment Area Class 1E Connectors Socket Contact Insertion and Removal Tools



SOCKET CRIMP CONTACT - INSERTION AND REMOVAL TOOLS

Insertion and Removal Tool Part Numbers and Dimensions					
Part Number	Contact Size	Wire Size		Insertion tool	Removal Tool
		mm ²	AWG		
10-40520LC	20	0.15-0.6	26-20	M.117346	M.118251
10-40588	18	0.15-0.6	26-20	M.117346	M.118249
10-40552	16S	1-1.5	18-16	M.117083	M.118250
10-40552-12	16S	0.6	20	M.117083	M.118250
10-40552-13	16S	0.15-0.6	26-20	M.117346	M.118250
10-40552-15	16S	0.75-1	18	M.117083	M.118250
10-40552-20	16S	1-2	14	M.117083	M.118250
10-40552-26	16S	2.5-3.0	12	M.117082	M.118250
10-40556	16	1-1.5	18-16	M.117083	M.118250
10-40556-08	16	0.15-0.2	26-24	M.117346	M.118250
10-40556-12	16	0.6	20	M.117083	M.118250
10-40556-13	16	0.15-0.6	26-20	M.117346	M.118250
10-40556-15	16	0.75-1	18	M.117083	M.118250
10-40556-20	16	1-2	14	M.117083	M.118250
10-40556-22	16	2.5	/	M.117083	M.118250
10-40556-26	16	2.5-3.0	12	M.117082	M.118250
10-40556-32	16	/	32-28	M.117083	M.118250
10-40560	12	2.5-3.0	12	M.117082	M.118250
10-40560-12	12	0.6	20	M.117083	M.118250
10-40560-15	12	0.75-1	18	M.117083	M.118250
10-40560-177	12	1.5	18-16	M.117082	M.118250
10-40560-20	12	2	14	M.117082	M.118250
10-40560-22	12	2.5	/	M.117082	M.118250
10-40560-30	12	4-5	/	M.117082	M.118250
10-40560-30M	12	4	/	M.117082	M.118250
10-40560-38	12	6	10	M.117082	M.118250
10-40793-1	8	9	8	M.117344	M.118260
10-40793-1-15	8	0.75-1	18	M.117082	M.118260
10-40793-1-18	8	1-2	18-14	M.117082	M.118260

Insertion and Removal Tool Part Numbers and Dimensions					
Part Number	Contact Size	Wire Size		Insertion tool	Removal Tool
		mm ²	AWG		
10-40793-1-20	8	2	14	M.117082	M.118260
10-40793-1-26	8	2.5-3.0	12	M.117082	M.118260
10-40793-1-30	8	4-5	/	M.117082	M.118260
10-40793-1-38	8	6	10	M.117344	M.118260
10-40793-1-50	8	10	/	M.117344	M.118260
10-10793-1-58	8	13.2	6	M.117344	M.118260
10-113474-4S-1	4	22-25	4	M.117347	M.118270
10-113474-4S-1-22	4	2.5	/	M.117082	M.118270
10-113474-4S-1-26	4	2.5-3.0	12	M.117082	M.118270
10-113474-4S-1-30	4	4-5	/	M.117082	M.118270
10-113474-4S-1-38	4	6	10	M.117344	M.118270
10-113474-4S-1-50	4	10	/	M.117344	M.118270
10-113474-4S-1-58	4	13.2	6	M.117344	M.118270
10-113474-4S-1-62	4	16	/	M.117347	M.118270
10-113474-1S	0	50-60	0	M.117348	M.118280
10-113474-1S-107	0	50	/	M.117348	M.118280
10-113474-1S-72	0	22-25	4	M.117347	M.118280
10-113474-1S-35	0	35	/	M.117348	M.118280
10-113474-1S-45	0	9	8	M.117344	M.118280
10-113474-1S-50	0	10	/	M.117344	M.118280
10-113474-1S-58	0	13.2	6	M.117344	M.118280
10-113474-1S-62	0	16	/	M.117347	M.118280
10-113474-0S	4/0	107	4/0	/	/
10-113474-0S-78	4/0	22-25	4	/	/
10-113474-0S-107	4/0	50	/	/	/
10-113474-0S-144	4/0	70	/	/	/

Please consult our sales department for other contact options or crimpING tool details.

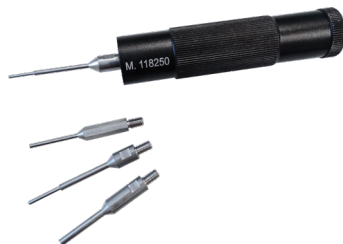
Guide Pin	
Contact size	Guide Pin P/N
20	M.125007
18	M.125000
16S and 16	M.125001
12	M.125002
8	M.125003
4	N/A
0	N/A
4/0	N/A

SUPER ITS: HARSH ENVIRONMENT

A



Insertion Tool



Removal Tool



Guide Pin