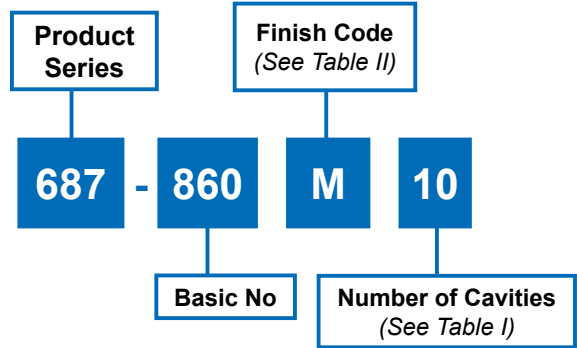


687-860
StarShield™ “Star”
 for StarShield™ Shield-Sock Backshells



StarShield™ “Star” for Shield Sock backshells

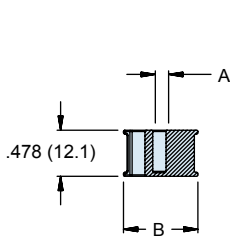
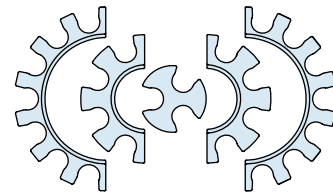
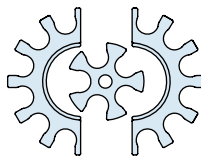
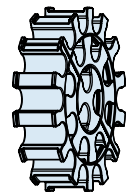
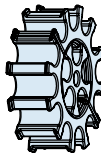
Table I					
No. Of Cavities	Style	A Dia	B Dia Max	C Dia Max	D Dia Max
3	1	-	.643(16.3)	-	-
4	1	-	.726(18.4)	-	-
5	1	.141(3.6)	.818(20.8)	-	-
6	1	.240(6.1)	.913(23.2)	-	-
7	1	.335(8.5)	1.010(25.7)	-	-
8	1	.385(9.8)	1.109(28.2)	-	-
9	1	.533(13.5)	1.208(30.7)	-	-
10	1	.633(16.1)	1.307(33.2)	-	-
14	2	-	1.470(37.3)	.798(20.3)	-
15	2	.141(3.6)	1.476(37.5)	.890(22.6)	-
18	2	.240(6.1)	1.570(39.9)	.985(25.0)	-
19	2	.330(8.4)	1.670(42.4)	1.081(27.5)	-
20	2	.385(9.8)	1.741(44.2)	1.181(30.0)	-
25	3	-	1.957(49.7)	1.374(34.9)	.715(18.2)
30	3	-	2.038(51.8)	1.456(37.0)	.788(20.0)



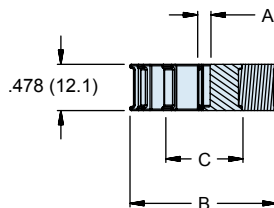
Notes:

1. Assembly to be bagged and tagged with manufacturer's name and part number.
2. Used with 687-859/861.
3. Material/Finish: Al alloy or CRES/see Table I

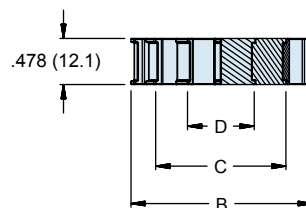
Table II	
Code	Finish Description
M	Electroless nickel
NF	Cad/O. D. Over electroless nickel (1000 hour salt spray)
ZM	Stainless steel/ electroless nickel
ZR	Aluminum/zinc-nickel, black



STYLE 1
 (Single Solid Star)



STYLE 2
 (Split Outer Star and Solid Inner Star)



STYLE 3
 (2 Split Outer Stars and Solid Inner Star)

Dimensions in inches (millimeters) and are subject to change without notice.